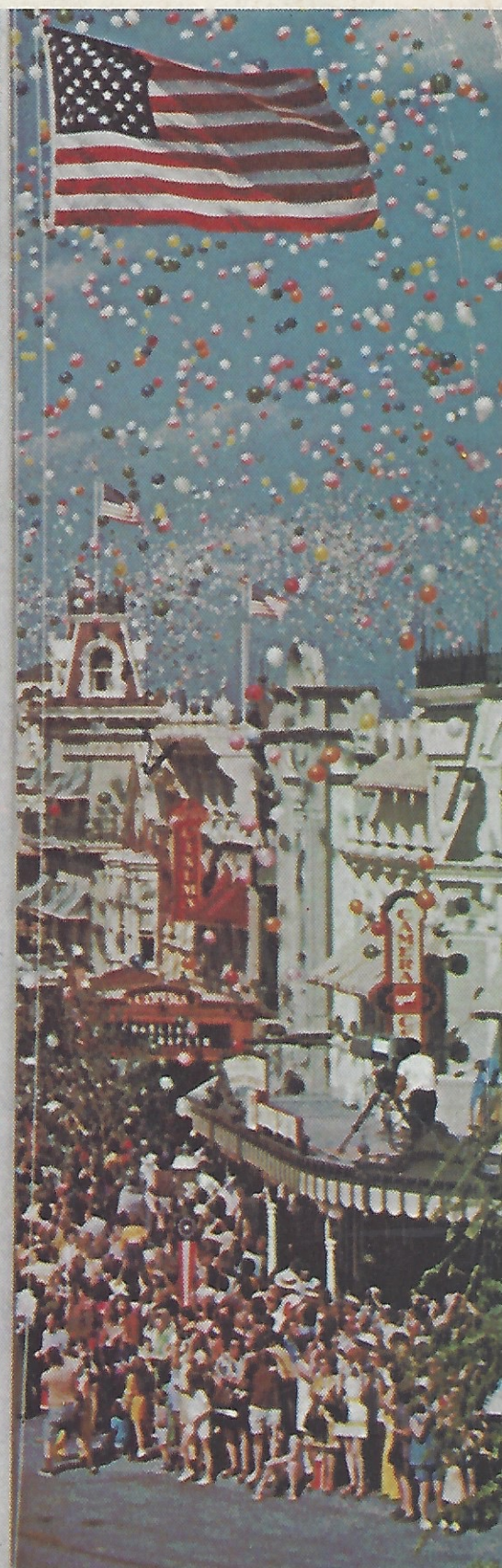
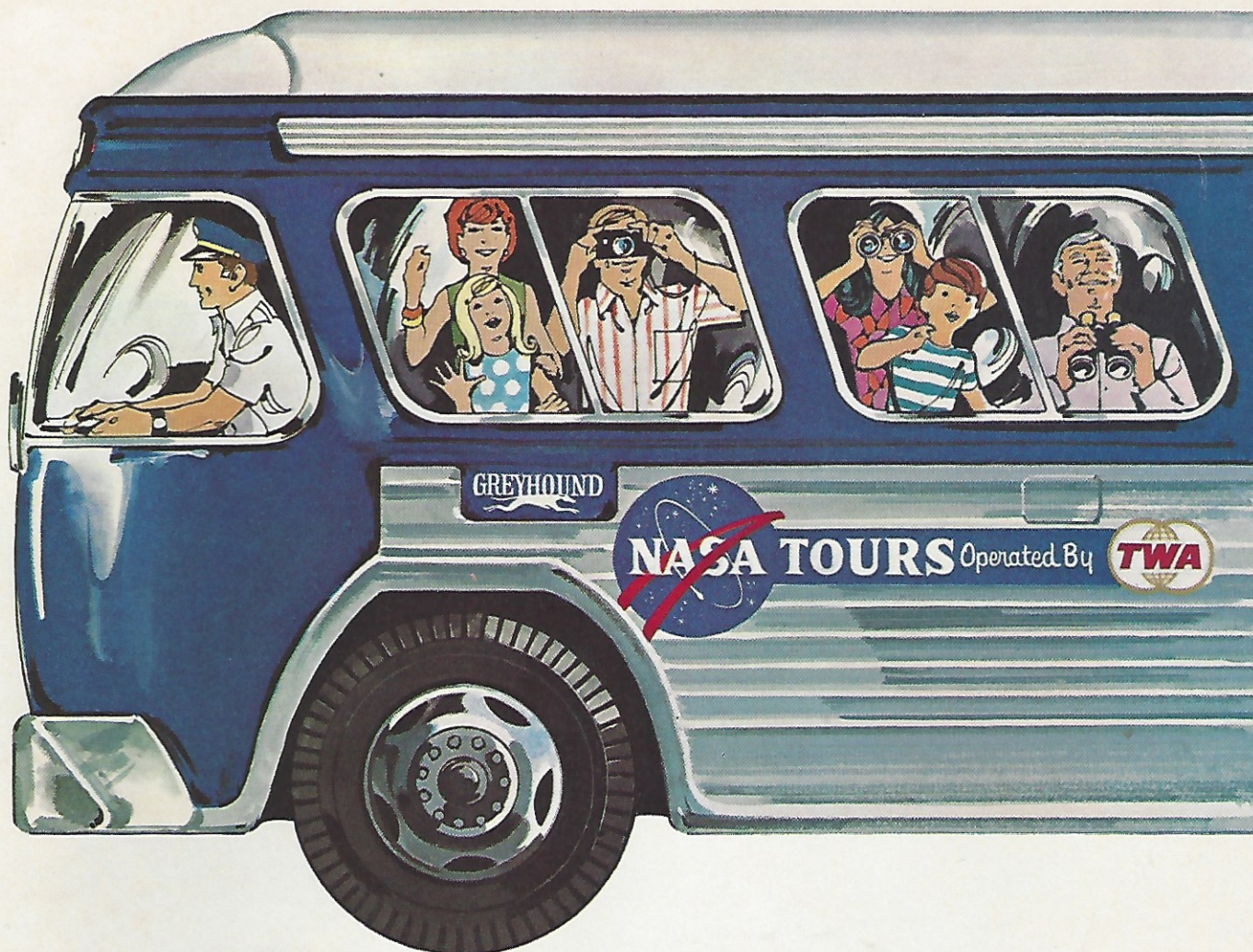




Vacationland

WINTER/SPRING 1972





Tour Kennedy Space Center

Visit the place where history happens.
See Pad 39A where America's moonships are launched.

Marvel at the VAB, one of the world's largest buildings.

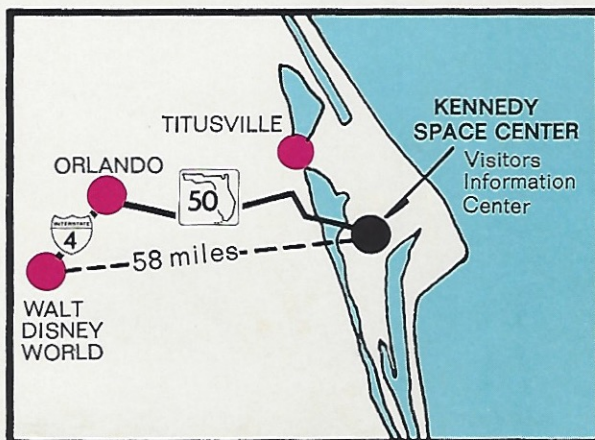
Take a walk through Mission Control Center.
Photograph the lunar module at the Visitors Information Center.

Join the million visitors a year to enjoy the thrill-packed fifty-mile tour of Kennedy Space Center.

The two-hour bus tour begins at the Visitors Information Center 6 miles east of U.S. Highway 1, south of Titusville, Florida. At the end of the tour, you'll return to the Center to enjoy free exhibits, science demonstrations and current space movies.

Tours begin at 8 A.M. and operate every day except Christmas Day. Over 4 million visitors have taken the tour, including representatives from 50 states and 60 countries.

TOUR KENNEDY SPACE CENTER



Vacationland

WINTER/SPRING 1972
 Vol. 1, No. 2

Editor **Jo Jac Bludworth**

Art Directors.... **Peter Weatherby**
Paul Brewer

Photographic Editor ... **Bill Spidle**

Advertising and Circulation
 Manager **Rod Caborn**

Vacationland is a service-feature magazine published three times yearly by Walt Disney World Co. Personally distributed through numerous hotels, motels, and leading tourist attractions and carriers. **Vacationland** is the only publication specifically directed to the vacationer and traveler in Florida, Georgia, Alabama and Louisiana.

© 1972 Walt Disney Productions

All rights reserved. Reprint of material only upon written approval of Walt Disney World, P.O. Box 40, Lake Buena Vista, Florida 32830.

Advertising rates upon request.

COVER STORY:

The Grand Opening of Walt Disney World was a memorable occasion, complete with pageantry, lavish spectacle, and festivity throughout the "Vacation Kingdom." Climax of the Opening was the Dedication Ceremony on Main Street in the Magic Kingdom theme park where thousands of entertainers and guests joined in a tribute to the late Walt Disney. As 50,000 balloons rose in the clear, blue skies of Central Florida, the first part of Walt Disney's magnificent dream became a reality.



LOCATION

Gateway to Walt Disney World is located approximately 20 miles southwest of Orlando on U.S. Highway 192, just west of Interstate-4.

OPERATING HOURS

Walt Disney World's Magic Kingdom theme park is open from 10 a.m. to 7 p.m., Monday through Friday; and from 9 a.m. to 9 p.m., Saturday and Sunday. On certain holidays and special occasions, the Magic Kingdom will remain open longer. Further information can be obtained by calling Walt Disney World theme park information: (305) 824-4321.

ADMISSION AND TICKET BOOK PRICES

For family groups we recommend the Walt Disney World Ticket Books for maximum thrift and enjoyment. Two types of Ticket Books are available. They are the WDW Seven Adventure Ticket Book and the WDW Eleven Adventure Ticket Book. The Seven Adventure Book includes admission to the Magic Kingdom theme park, a choice of seven attractions, and Walt Disney World transportation (monorail, steamboat, and tram). The Eleven Adventure Book includes admission to the Magic Kingdom theme park, a choice of eleven attractions, and Walt Disney World transportation (monorail, steamboat, and tram). Walt Disney World General Admission includes unlimited use for one day of the transportation system (monorail, steamboat, and tram), admission to the Magic Kingdom theme park, and all free shows, exhibits, and entertainment. For the first-time guest, we recommend the Guided Tour which includes Walt Disney World transportation, admission to the Magic Kingdom theme park, six major attractions, and a Tour Guide.

	Adult	Junior (12-17)	Child (3-11)
WDW Seven Adventure Book	\$4.75	\$4.25	\$3.75
WDW Eleven Adventure Book	\$5.75	\$5.25	\$4.75
Guided Tour	\$6.50	\$6.50	\$3.75
General Admission	\$3.50	\$2.50	\$1.00

Ticket prices include state tax and are subject to change without notice.

DINING FACILITIES

There are more than 20 fine restaurants and refreshment stands within the Magic Kingdom theme park. In addition, the Polynesian Village and the Contemporary Resort-Hotel provide snack bars, coffee shops, and elegant restaurants. Box lunches and groceries are available in the Trading Post at Fort Wilderness campgrounds. Golfers can enjoy a varied menu at the Golf Course Clubhouse.

OVERNIGHT ACCOMMODATIONS

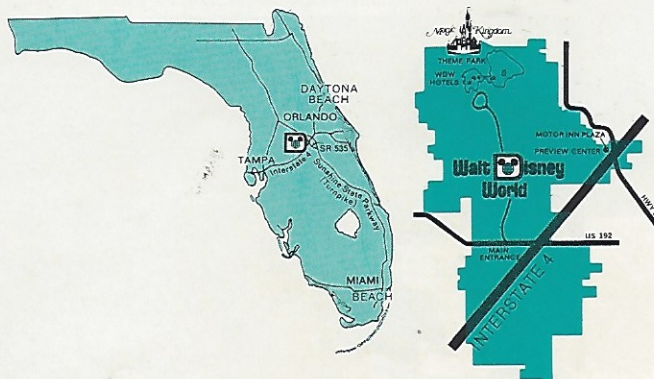
Guests wishing to stay at Walt Disney World can enjoy the themed decor of either the futuristic 1,057-room Contemporary Resort-Hotel or the luxurious 500-room Polynesian Village. Fort Wilderness campgrounds has more than 250 sites available for camper-trucks, trailers, and tents. For reservations write: Walt Disney Reservations, P.O. Box 78, Lake Buena Vista, Florida 32830, or call (305) 824-8000. Overnight accommodations will be available at Travelodge, Royal Inn, Dutch Inn, and Howard Johnson's at Motor Inn Plaza in the city of Lake Buena Vista in mid-summer. Nearby Orlando also offers overnight facilities.

PUBLIC TRANSPORTATION SERVING WALT DISNEY WORLD

The Walt Disney World-Orlando area is served by various types of public transportation. Consult your travel agent or major airline, train, or bus schedules to meet your vacation plans.

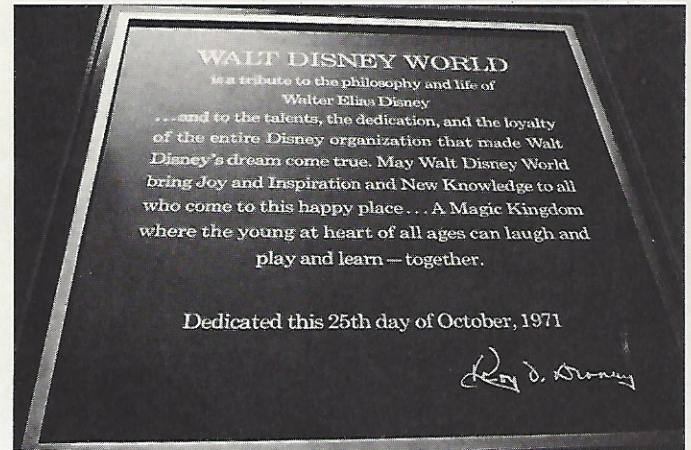
FOR FURTHER INFORMATION

Additional information about Walt Disney World can be obtained by writing: Walt Disney World, P.O. Box 40, Lake Buena Vista, Florida 32830.



"WALT DISNEY WORLD is a tribute to the philosophy and life of Walter Elias Disney...."

The Grand Opening of Walt Disney World



In 1965, when Walt Disney revealed his plans for the 27,400 acres of Central Florida land recently purchased by his company, the scope of his vision staggered the imaginations of many and inclined others to polite skepticism.

For how could 43 square miles of scrub and marshland, an area twice the size of Manhattan, be transformed into a 2,500-acre, destination-vacation resort, an industrial park highlighting American industry at work, and a city of the future to be known as EPCOT (Experimental Prototype Community of Tomorrow)?

Those who knew Walt Disney never doubted his dream and never doubted the ability of his organization to make the dream a reality.

Their confidence was justified. In Oc-

tober of 1971, the first part of Walt Disney's vision, the 2,500-acre "Vacation Kingdom," was an actuality.

Where once there had been swamps and dense underbrush, now there were two magnificent "themed" resort hotels, a 100-acre Magic Kingdom theme park similar to Disneyland in California, 600 acres of wilderness camping area, and two 18-hole, championship golf courses.

Yachts, sailboats, steamboats, and every conceivable type of pleasure watercraft graced the sparkling waters of 450-acre Bay Lake and the 200-acre, man-made Seven Seas Lagoon, while silent, all-electric monorail trains sleekly circled the resort at heights up to 60 feet and at speeds up to 45 miles per hour.

The impossible had been achieved,

and thousands of persons came from all over the world to pay tribute to the creator, Walt Disney, and to his creation, Walt Disney World, during three days of special pageantry, celebration, and dedication ceremonies in late October.

The Grand Opening of Walt Disney World was launched with an evening concert by the World Symphony Orchestra in the forecourt of the 180-foot Cinderella Castle in the Magic Kingdom theme park.

Composed of more than 140 musicians representing 60 countries, 26 states, and the District of Columbia, the World Symphony Orchestra was unique, a physical affirmation that the language of beauty is international and that world peace is not an impossible ideal.

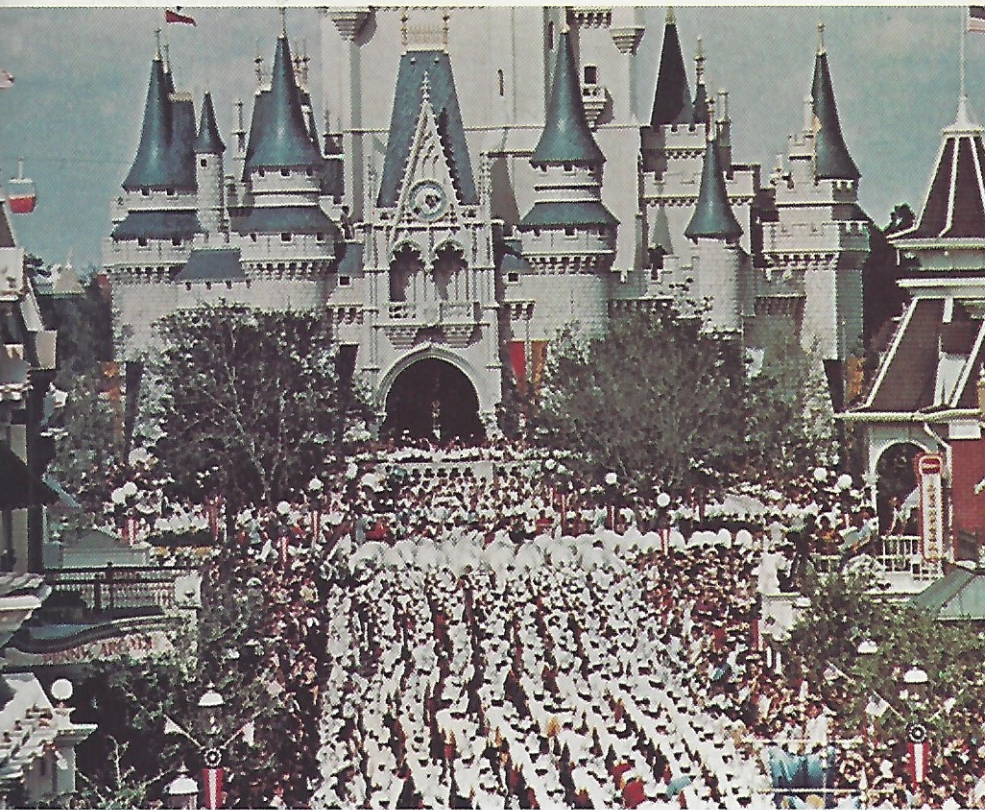
(Continued on page 7)

Arthur Fiedler conducts the World Symphony Orchestra.



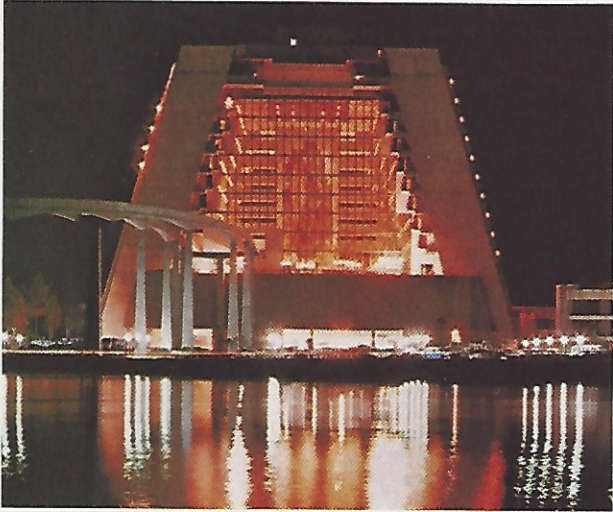
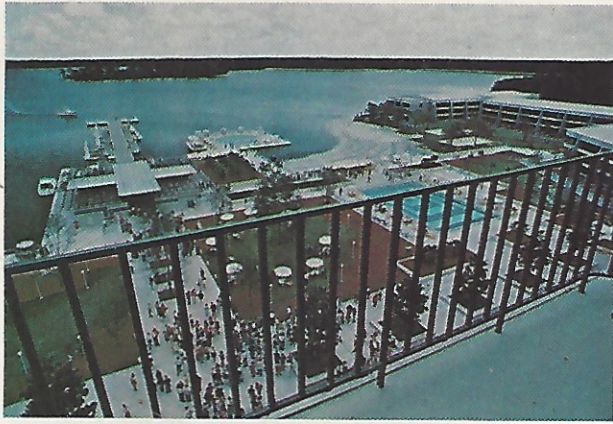


Walt Disney World was formally dedicated to Walt Disney by his brother, Roy Disney, during the Grand Opening in a moving ceremony held at Town Square in the Magic Kingdom theme park.



Thousands of performers danced, sang, and paraded down Main Street in a musical spectacular celebrating the Grand Opening of "The Vacation Kingdom of the World."



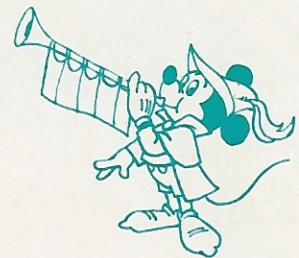


The Polynesian Village and the Contemporary Resort-Hotel were launched with a festive nighttime luau, an electrical water show, and a celebrity-studded ceremony and poolside buffet presided over by comedian Bob Hope.





Celebrities attending the Grand Opening included: Jonathan Winters (far left), Hugh O'Brien (top center), Fred MacMurray and wife, June Haver (below center), Agnes Moorehead and Caesar Romero (top right), and Arthur Fiedler (below right).



(Continued from page 4)

As musicians from Egypt, Israel, Poland, China, Japan, and Korea responded to the baton of Maestro Arthur Fiedler before the 2,500 specially invited guests, and as the music of Copland, Wagner, Shostakovich and other great composers rose into the moonlighted night, the spirit of the man who dedicated his life to the belief that "it's a small world," where laughter and joy are desperately needed, was very present. The evening was a splendid and fitting tribute to his memory.

The mood of the next two days was one of merriment, excitement, and anticipation, as the two resort hotels and the Magic Kingdom theme park were dedicated in special ceremonies, pageantry, and lavish spectacle.

Comedian Bob Hope presided over the dedication of the 1,057-room, 14-story Contemporary Resort-Hotel. Standing on a platform in the Grand Canyon Concourse (a lobby unique with mono-

rail trains running through it and so vast it was decorated by landscape architects), the master wit introduced celebrities to the hundreds of guests and got off a series of ad-libs that were classic.

"It's the biggest 'Vacation Kingdom' in the world," quipped Hope, "and just think, it all started with a gentle mouse, a bad-tempered duck, and seven mixed-up dwarfs."

A significant moment of the ceremony occurred when H. R. Haldeman, Assistant to President Nixon, presented Roy Disney with an American flag that had once flown over the White House. It was the first American flag given by the President during his term of office and was proudly raised over Town Square the following day during the formal dedication of Walt Disney World.

Mingling with guests at a poolside buffet after the dedication of the Contemporary were: Rock Hudson, Annette

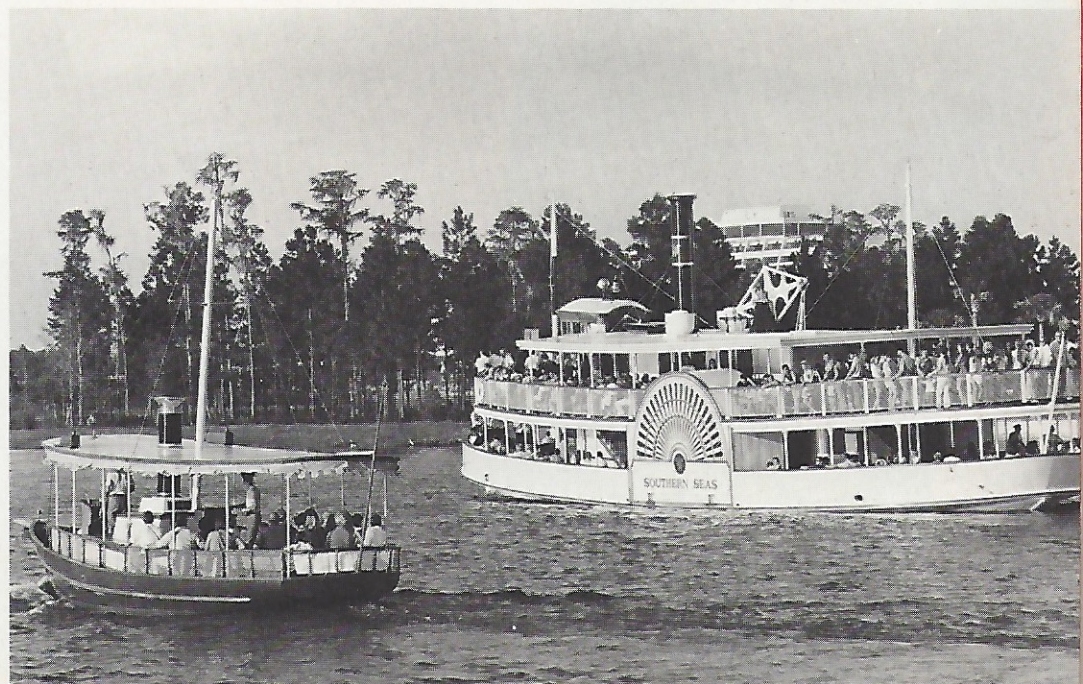
Funicello, Walter Brennan, Fred MacMurray, June Haver, Agnes Moorehead, Ray Bolger, Andy Devine, Cesar Romero, Fess Parker, Sebastian Cabot, Hugh O'Brien, Sam Jaffe, Robert Stack, Jonathan Winters, Steve Forrest, Sterling Holloway, David Brinkley, Greg Morris, Astronaut David Mitchell, Lynda Byrd Robb, Johnny Whitaker, Cincinnati Red Catcher Johnny Bench, television comedian Joe Flynn, and the President's Press Secretary, Ronald Ziegler. Many had known Walt Disney and had worked with him; all respected the contribution his genius had made to their lives.

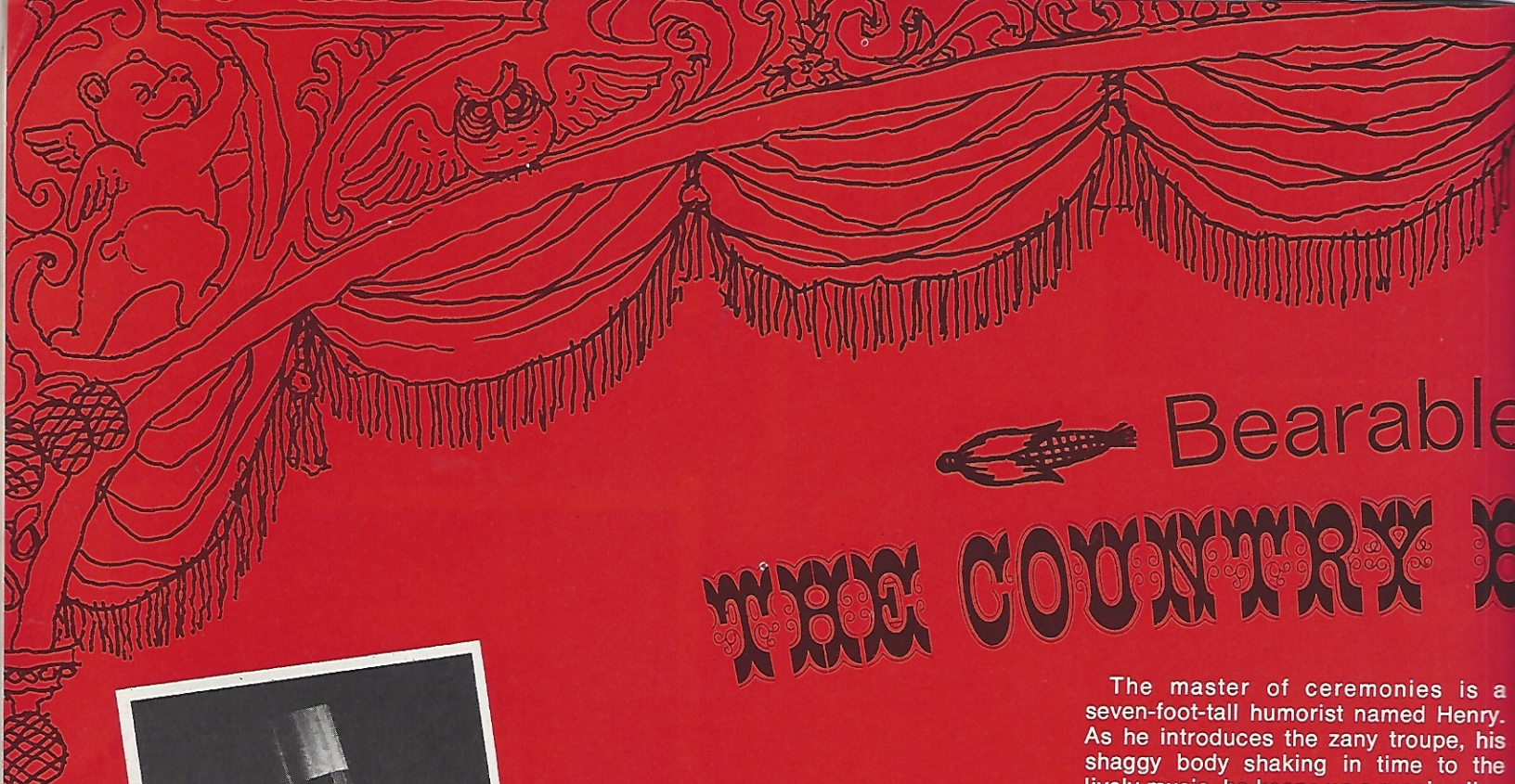
The Polynesian Village, with its seven low-silhouetted guest "longhouses" set among palm trees and tropical pools, was officially opened with a nighttime luau on the white-sand beach in front of the Tonga Longhouse.

(Continued on page 26)



Sleek monorail trains and graceful steam-powered boats transported more than 100,000 guests to the Magic Kingdom for the Grand Opening ceremonies.





Bearable

THE COUNTRY BEAR JAMBOREE



"HENRY"

Tucked away in Frontierland, one of the six themed "lands" in the Magic Kingdom theme park, is one of the most unusual theaters in the world. Called Grizzly Hall, it was designed especially for a group of bear performers and ostensibly founded by Ursus J. Bear after an inspirational season of hibernation.

Ursus has since passed on, but his likeness on the proscenium frieze benignly gazes down upon his descendants as they rock the theater with their repertory of bearish humor, mimicry, and music in the "Country Bear Jamboree."

Brought to "life" through the electronic wizardry of the Disney "Audio-Animatronics" system, the cast of 17 life-size and lifelike bears (as well as a rakish racoon that poses as a hat and the talkative heads of a buffalo, a stag, and a moose that "hang around together") present a country-western hoedown that is unbearably funny.

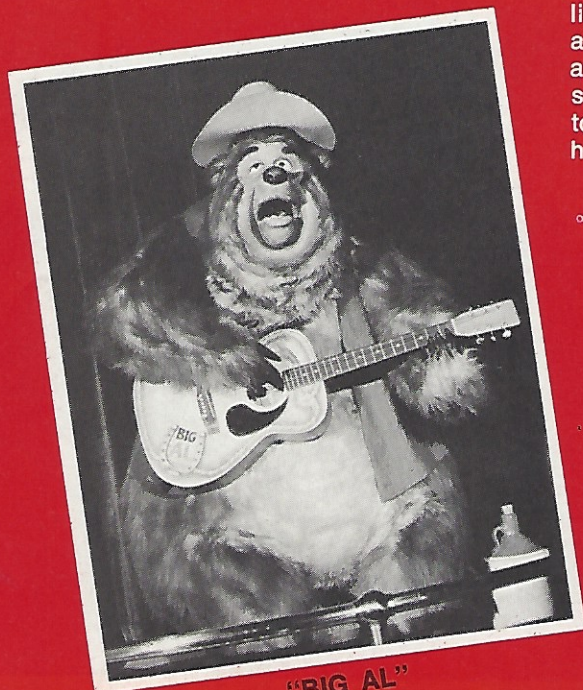
The master of ceremonies is a seven-foot-tall humorist named Henry. As he introduces the zany troupe, his shaggy body shaking in time to the lively music, he keeps up a running line of gags that amuse him almost as much as they do the audience.

"Enough of this chitchat, yak-yak, and flim-flam," chuckles Henry, cutting off his own rambling prologue. "I give you a sorted assortment of executioners of music and song — 'The Five Bear Rugs'!"

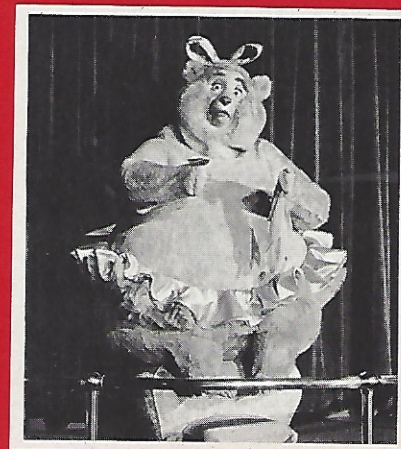
And without further ado, the red-velvet curtain goes up on Zeke, Zeb, Ted, Fred, and Tennessee, a foot-stompin' group of backwoods bruins playing everything from an improvised bass fiddle to a stoneware jug.

Not to be outdone, the flamboyantly attired Gomer joins in with a gripping attack on the keyboard of his beehive-adorned piano, causing a caustic comment from the mounted moose: "Hey! He's a regular Libra-ray-chee."

Barely has the audience time to recover from the hirsute hilarity of the male musicians when the spotlight picks up the forlorn figure of a female bear in



"BIG AL"



"TRIXIE"

Artistry:



COUNTRY BEAR JAMBOREE

a gilded alcove.

The mood changes from one of levity to one of lament as Henry introduces Trixie, the "Tampa Temptation." A born loser, Trixie has gone from "cubby" to chubby, and with the weight of her woes bearing her down, she sings: "Tears will be the Chaser for my Wine."

Guests easily recognize the "winner" in the show when Teddi Barra, in plumed hat and feathery boa, descends merrily from the ceiling on her flower-adorned swing. As Teddi woos the audience with whispers sweeter than honey, even Henry succumbs, promising "to come up and see you **anytime!**"

But the show must go on. And how it does go on, with Henry introducing one bear notable after another. Taking turns in the spotlight are: Bubbles, Bunny, and Beulah, the "three, little bears in blue"; Ernest, the dapper dude; Terrence, the shank shaker; Wendell, the overbearing baritone; "Liver-Lips" McGrowl; and Big Al, whose rendition of "Blood on the Saddle" literally almost stops the show.

The entire cast assembles for a rousing finale, which is as much an attempt

to silence Big Al as it is to end the jamboree. Finally, joined by the racoon, the buffalo, the moose, and the stag, Henry thanks the audience for "bearing with us to the bear end" and the curtain comes down on the "Country Bear Jamboree."

It is entertainment at its best, with all the excitement and fun one expects from "live" country-western shows. And, not surprisingly, audiences find themselves responding to the bear performers as if they were human, singing along with their music and applauding their witticisms.

"We tried to give each bear a very definite personality," explained one of the Disney designers. "Bears are really very lovable creatures. Many of their mannerisms are quite human. They were a natural choice for a country-western musical show."

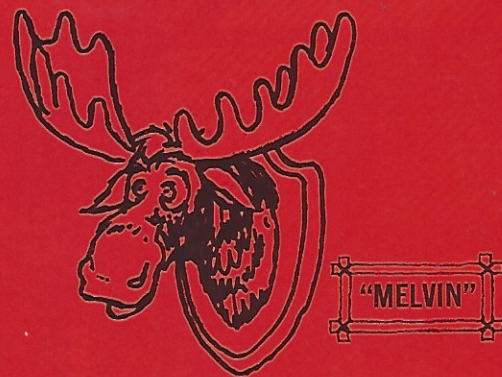
Ursus J. Bear, founder of Grizzly Hall, would certainly agree.



"TEDDI BARRA"



"BUBBLES, BUNNY, AND BEULAH"



Personally Yours,

STORYTELLERS OF THE MAGIC KINGDOM



storyteller guide before they begin their three-hour trip through the six themed "lands" where history, adventure, fantasy, and the future exist side by side.

Then, it's off to Main Street, Adventureland, Frontierland, Liberty Square, Fantasyland, and Tomorrowland, with visits to popular attractions and refreshing rest stops along the way. As she points out the many shops and restaurants in the Park, the guide tells the story of each "land," pointing out how each area relates to the career of Walt Disney.

Spontaneous happenings along the way spark questions from curious guests which the guide eagerly answers. If she should be stumped, which is rare, she will take the visitor's name and address, research the question, and mail the answer personally.

For the first-time guest or for the individual with limited time for leisure hours, the Guided Tour is an excellent way to become quickly acquainted with "the happiest place on earth."

And for the storytellers of the Magic Kingdom, who practice their craft 365 days a year, it is the best way to let each person know he is an important part of Walt Disney's dream.

In the days when kingdoms were commonplace, only the king had his personal storyteller. Mythmaker, legend bearer, and skillful weaver of fact and fiction, the courtly raconteur delighted, excited, and charmed with his art.

Today, in a unique kingdom, the ancient art of storytelling is commonplace, with charming storytellers holding court in every corner of the realm.

The "storytellers" of Walt Disney World's Magic Kingdom theme park are known as Tour Guides, a group of attractive, enthusiastic young women with a special gift for making each guest's visit a truly memorable one.

Well versed in Disney lore and legend, the Tour Guide takes a personal interest in each member of her group, answering

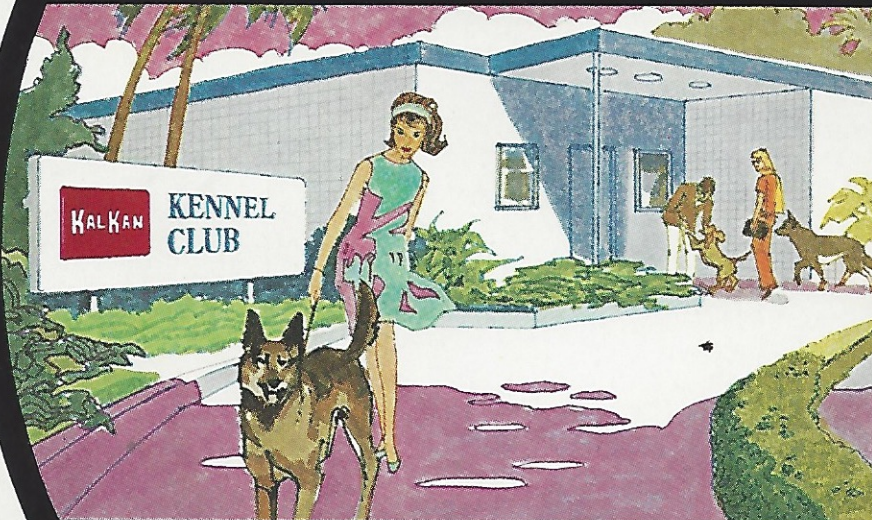
individual questions, pointing out little-known facts, and directing specific anecdotes toward guests interested in a particular attraction or aspect of the "Vacation Kingdom."

For example, as the guide and her party journey from the Main Entrance Complex to the entrance of the Magic Kingdom, ecology buffs will learn of the care taken to preserve the natural environment at Walt Disney World's 600-acre Fort Wilderness campgrounds. The surfing enthusiast, noting the waves cresting on the Seven Seas Lagoon, will be told the story of the wave-making machine, capable of creating waves from four inches to four feet in height.

Once in the Magic Kingdom theme park, guests are quickly oriented by the



Bring your pets.



©Walt Disney Productions

Kal Kan thinks Walt Disney World should be for the whole family. So if you have pets—bring them along! They can stay at our modern Kal Kan Kennel Club. And dine on Walt Disney World's official pet food. With our compliments.

Kal Kan....official pet food in Walt Disney World.

Good meat protein
naturally balanced
for complete nutrition.



Ole! Only minutes away... Florida's exotic, world-famous
SPANISH RESTAURANTS

The Columbia of Tampa

At Seventh Avenue from 21st to 22nd Street in the heart of Tampa's Latin Quarter... since 1905. Internationally acclaimed as world's largest... Florida West Coast's Only Holiday Award-winner for 11 consecutive years... strolling Violins, Singers and Dancers nightly!

The Columbia in Orlando

At the Park Plaza Hotel on beautiful Lake Eola in Downtown Orlando. Open daily for breakfast, luncheon and dinner.

The Columbia in Sarasota

Dining at its finest in the midst of 113 magnificent and fashionable shops at exclusive St. Armand's Key, Sarasota. Open for lunch and dinner daily.

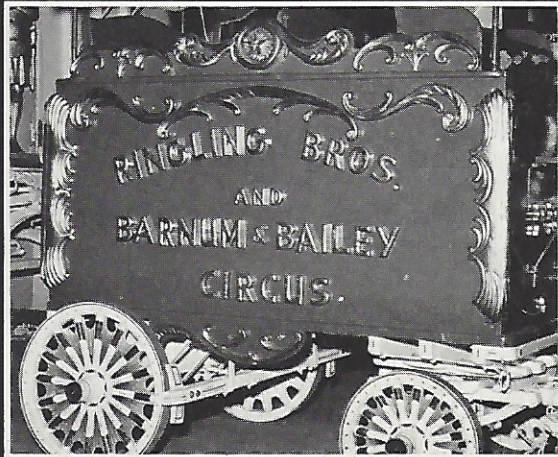
Las Novedades of Tampa

At Seventh Avenue and Fifteenth Street, Ybor City, Tampa. Tampa's Oldest and Finest Spanish Steak House... since 1890. Winner of many awards for its gourmet dishes. Strolling, singing Guitarists during luncheon and dinner hour daily.



An Era of
Opulence
and
Grandeur:

THE RINGLING MUSEUMS



Sarasota. For millions of Americans, the name evokes a host of recollections from a time gone by. A time when the country was crisscrossed by railroads and the biggest event in many a town was heralded by the excited cry: "The circus train is coming!"

Entire populations turned out to watch car after car of animals, props, and performers go by. When the "Big Top" finally went up and the sawdust went down, child and grownup alike were held spellbound by the wonders inside.

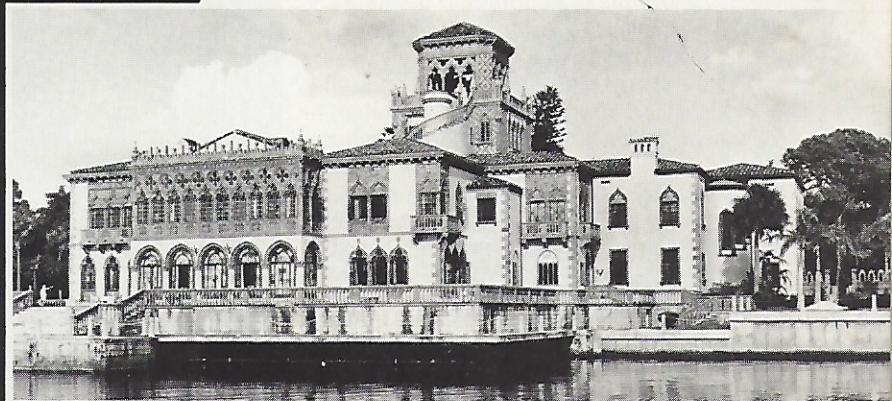
The grandeur, the immensity, the lavishness of spectacle were typically American, but the tradition of the circus was European, dating back to the time of ancient Rome.

And so it was to Europe that John Ringling, perhaps the greatest circus magnate of all time, went to acquire acts for "The Greatest Show On Earth." And it was while traveling in Europe that he developed a life-long love for Italy, its culture, climate, and charm.

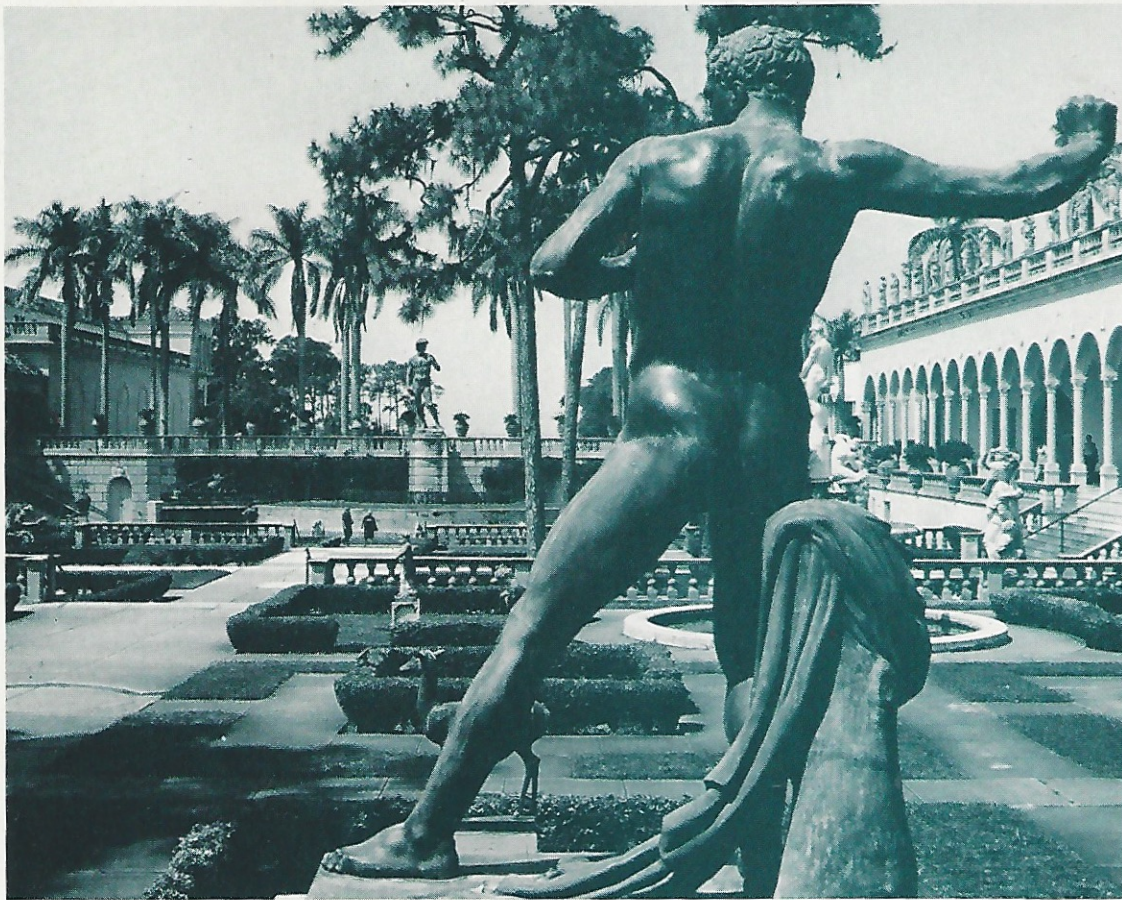
Sarasota, located on the west coast of Florida, became the winter headquarters for the Ringling Circus, its sunny skies and sparkling blue water reminiscent of Southern Italy.

It also was in Sarasota that John and Mable Ringling built their magnificent winter residence, Ca' d'Zan, which means "House of John" when translated from the Venetian dialect.

(Continued)



Ca' d'Zan: the Ringling winter residence.



A view of the Italian-styled courtyard of the Museum of Art.

Situated on 68 acres of tropically landscaped grounds and overlooking Sarasota Bay, the \$1,500,000 mansion is patterned after the Doge's Palace in Venice, with 30 rooms surrounding a two-and-one-half-story roofed court.

Ca' d'Zan is exquisitely furnished, each room reflecting its owners' predilection for the grand and the opulent. Invaluable tapestries, Venetian-glass windows, marble halls and bathrooms, painted ceilings, and elaborately carved and gilded furniture purchased from the estates of Vincent Astor and Jay Gould provided the setting for splendid entertaining.

The Ringling's annual visit to Europe inspired more than an interest in classical architecture; it created the desire in John Ringling to build a museum of great art for the people of Florida. In only four years, he purchased some 500 paintings and provided an extraordinary building on his estate to house them.

The John and Mable Ringling Museum of Art is styled after a 15th-century Italian Villa, with three gallery wings enclosing a courtyard landscaped with reproductions of classical and Renaissance sculpture and fountains. An 18-foot bronze statue of *David* by Michelangelo, cast at the Chiurazzi firm in Naples, towers over the bridge which forms the fourth wall of the courtyard.

The Museum of Art contains the most important collection of Baroque art in the country. Large, powerful paintings with

dramatic subject matter appealed to John Ringling, and he was able to obtain four enormous works by Rubens as well as the largest equestrian portrait ever made by Gainsborough. The museum also includes works by Rembrandt, Frans Hals, Tintoretto, El Greco, Velasquez, Poussin, Raeburn, Lawrence, and Sir Joshua Reynolds.

When John Ringling died in 1936, he willed his entire estate and fortune to the State of Florida. Since then, the 18th-century Asolo Theater and the Museum of the Circus have been added to the Museum complex.

The Asolo Theater, which once occupied the great hall of the castle of Queen Catherine Cornaro in the hill town of Asolo, Italy, is virtually complete, still



Abraham Receiving Bread and Wine from Melchizedek by Peter Paul Rubens.



The eighteenth-century Asolo Theater.

containing the box once regularly occupied by English poet Robert Browning and the stage once trod by the great Italian tragedian, Eleanore Duse.

Today, the Asolo Theater has its own resident company of actors and features an annual season of classical plays, well-known operas, and great art films.

The Museum of the Circus re-creates the excitement, pomp, and pageantry of an important part of American history. Represented are scale models of the circus trains of old, the big tents of "The Greatest Show On Earth," the original gilded and ornamented bandwagons, and a full-size set of a circus backyard, with the tents, wagons, and paraphernalia of famous circus stars.

A visit to the Ringling Museums, open every day of the year, is a rewarding experience that no visitor to Florida will want to miss.

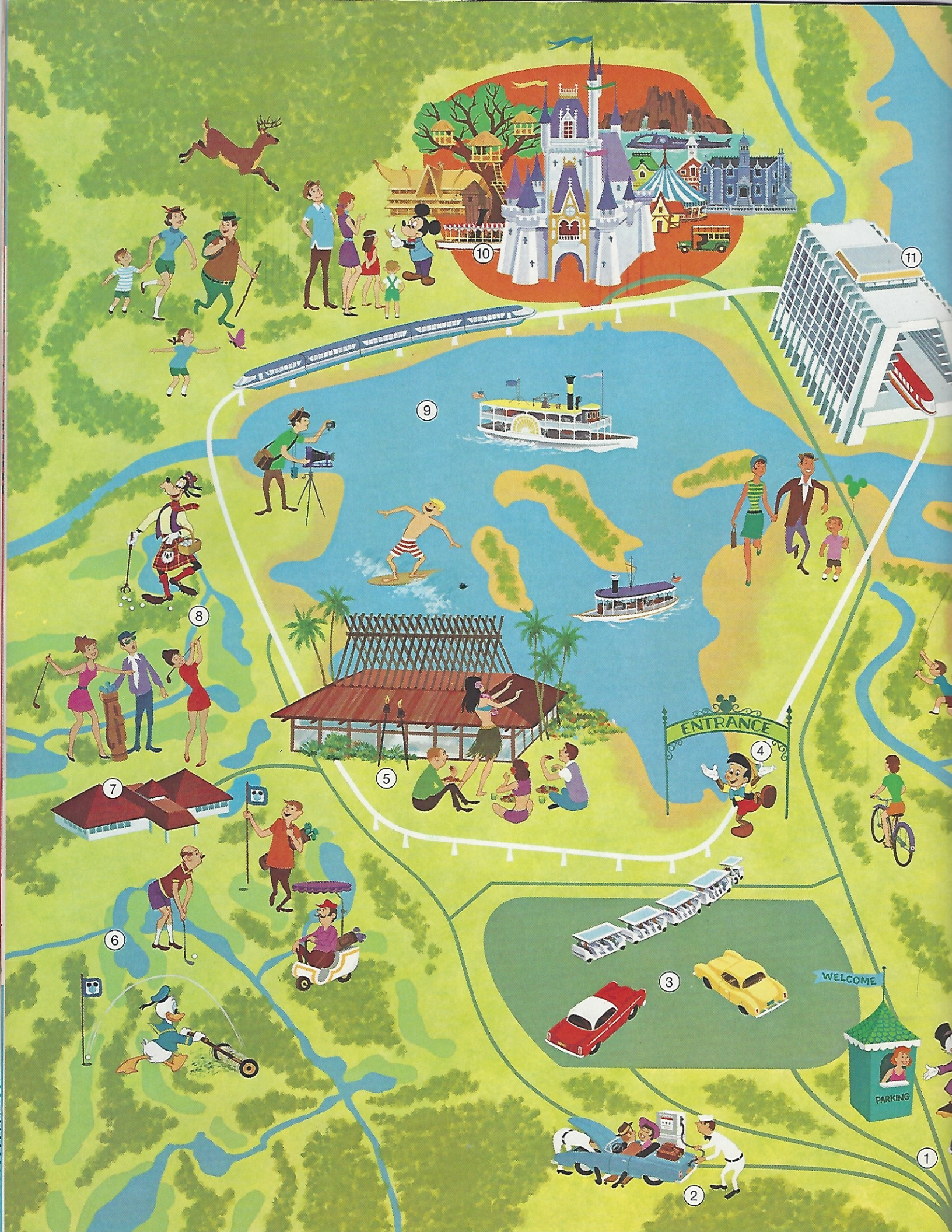


A Whirl-a-World Away From the Every Day. Sun-cruise to the Bahamas. Discover the wonderful world of the yacht-like ARIADNE sailing from Port Everglades (Fort Lauderdale), Florida, or enjoy a big-do-as-you-please vacation aboard the big bountiful NEW BAHAMA STAR from Dodge Island, the New Port of Miami, Florida. Both ships go to Nassau on a 3-Day

cruise every Friday — from \$95; and to Nassau and Freeport on a 4-Day cruise every Monday — from \$115. Ships are your floating resort hotels all the way. For further information, full color brochures or reservations see your Travel Agent or Eastern Steamship Lines, General Sales Agents, Pier 2, P.O. Box 882, Miami, Florida 33101. Telephone (305) 373-7501.

SHIPS AMERICAN OWNED • REGISTRY LIBERIA





Walt Disney World FLORIDA

VACATION KINGDOM • 2,500 ACRES

- ① **Entrance From U.S. 192:** Parking Ticket Gate, Hotel Reservations, and Hotel Accommodations Information.
- ② **Gulf Car Care Center:** Complete service facilities for automobiles.
- ③ **Walt Disney World Parking Area:** 12,000-car parking area for guests.
- ④ **Main Entrance:** Monorail, Steamboat, and Motor Tram Transportation Network. Kal Kan Kennel Club, Guided Tours, Guest Relations, Public Lockers, and Lost & Found.
- ⑤ **Polynesian Village:** 500-room Resort Hotel with dining, swimming, boating, and beach facilities.
- ⑥ **The Palm Course:** A championship, 18-hole, 6,410-yard, par-72, golf course.
- ⑦ **Golf Course Clubhouse:** A bi-level clubhouse featuring a pro shop, restaurant, and locker facilities for men and women.
- ⑧ **The Magnolia Course:** A championship, 18-hole, 6,550-yard, par-72 golf course.
- ⑨ **Seven Seas Lagoon:** A 200-acre, man-made lagoon for sailing, swimming, and special nighttime shows.
- ⑩ **The Magic Kingdom Theme Park:** As exciting as Disneyland, with six themed "lands," restaurants, shops, over 30 attractions, and free entertainment.
- ⑪ **The Contemporary Resort-Hotel:** 1,057 guest rooms located in a 14-story, A-shaped main building and two bayside wings. Featuring elegant dining, boutiques, three swimming pools, marina, and the Grand Canyon Concourse, one-third longer than a football field.
- ⑫ **Bay Lake:** 450-acre natural lake for swimming, sailing, and water skiing. Lined with private white-sand beaches.
- ⑬ **Blackbeard's Island:** Wooded island with beach, landing dock, and clearing for picnicking and excursions.
- ⑭ **Tri-Circle D Ranch:** Home of all the horses serving Walt Disney World, with saddle horses available for guided trail rides. Regulation-size arena.
- ⑮ **Fort Wilderness:** 600 acres of lush, wooded campground with 265 sites available for campers, trailers, and tents at \$11 per night per site with a seven-day limit. Boat dock and beach. Recreation and entertainment. No pets or private boats allowed. Free use of monorail, steamboats, and trams.
- ⑯ **Fort Wilderness Trail**



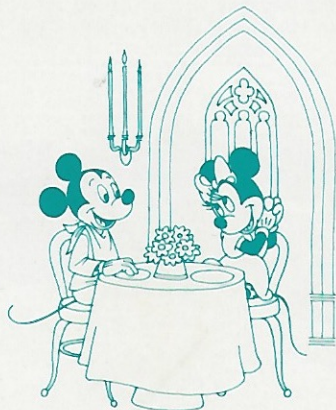
come to florida's
two great
natural attractions

SILVER SPRINGS and WEEKI WACHEE



World-famous glass bottom boats head a list of six great and varied attractions at Florida's Silver Springs. Weeki Wachee, spring of live mermaids, also offers a river cruise and a colorful tropical bird show to add to your enjoyment. And at Weeki Wachee, a superlative Holiday Inn provides complete resort accommodations.





Fantastic dreams and fanciful wishes all come true in the "Vacation Kingdom."

Who hasn't dreamed of dining in the fairy-tale splendor of a medieval castle or cruising by moonlight on a private yacht? What woman wouldn't wish for so many shops to browse in that it would take days to visit them all? And what man hasn't thought of fishing in his own privately-stocked creek in the morning, playing championship golf in the afternoon, and enjoying the charms of Polynesian dancers in the evening?

However whimsical the pleasure of a guest, chances are it can be satisfied within the 2,500 acres of Walt Disney World. A Magic Kingdom theme park with restaurants, shops, and attractions from the worlds of fantasy, history, and the future; two "themed" resort hotels with marinas, private beaches, elegant shops, and exotic restaurants; a 600-acre camping area with a horse ranch, fishing streams, general store, private dock and beach; two sweeping, 18-hole championship golf courses with a clubhouse restaurant and sports shop; and 650 acres of water for sailing, swimming, and even surfing offer endless delights for visiting dreamers.

Guests who enjoy traveling will find water, air, and land vehicles of every age and description awaiting their pleasure. Submarines traveling underwater in the



the QUIXOTIC QUALITY of PLEASURE



Magic Kingdom and 250-passenger, sidewheel steamboats traveling above water in the Seven Seas Lagoon will appeal to the nautically minded. Yachts, Aqua Homes, sailboats, Hobie catamarans, Polynesian war canoes, a Chinese junk from Hong Kong, and do-it-yourself Bob-A-Rounds are just a few of the watercraft available.

Compare the train of the future with the train of the past. Ride the silent, all-electric Walt Disney World Monorail Trains at speeds up to 45 miles an hour, and then travel around the Magic Kingdom on an authentic, narrow-gauge steam train of the early 1900's.

Motorized trams, horse-drawn streetcars, omnibuses, jitneys, horseless carriages, a fire engine, and racing cars in Tomorrowland provide down-to-earth traveling pleasure.

For the up-in-the-air enthusiast, there are flying elephants in Fantasyland, a bucket highway in the sky between Tomorrowland and Fantasyland, and a way-out simulated rocket trip to the moon in Tomorrowland. STOL (Short Take-Off and Landing) planes leave Walt Disney World every day for short trips to other cities in Florida.

In a world where everything is possible and nothing is improbable, entertainment ranges from the highly comical to the fantastically beautiful. And in between the two, there is something to please the taste of everyone.

(Continued)



Come walk on the moon.

Touch capsules and equipment recovered from space. See a moon rocket as long as a football field. Whirl in a gyro chair, fire a rocket engine, talk to a computer.

It's earth's largest space exhibit — lets *you* get involved.

For color brochure write to Alabama Space Center, Tranquility Base, Huntsville, Alabama 35807.

"The Alabama Space Center is by far the best facility of its kind in the world." Wernher von Braun

**The Alabama
Space Center**
Huntsville, Alabama

Whether the visitor fancies the sounds of a jazz organist, a classical pianist, a strolling mariachi band, or the drums of Polynesia, he can find his pleasure in the lounges and restaurants of the two hotels. The big-band sound for dining and dancing is a nightly feature of the Top Of The World penthouse-restaurant in the Contemporary Resort-Hotel. And special musical entertainment is provided for romantic moonlight cruises on the Seven Seas Lagoon.

Steel-drum bands, bluegrass bands, English pearly bands, polka bands, and marching bands perform daily in the Magic Kingdom theme park. Also on hand are banjo duos, violin trios, barber-shop quartets, madrigal singers, and fast-paced groups of musicians and dancers.

Parades, electrical water pageants,




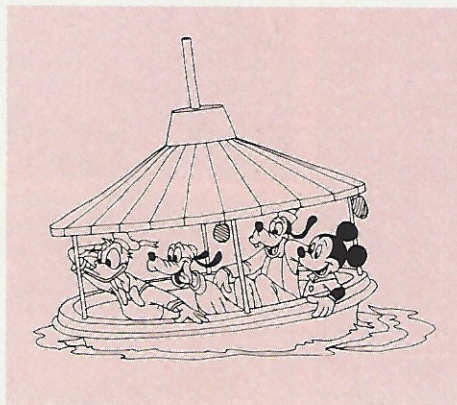
Shopping at Mlle. Lafayette's Parfumerie (above) or golfing on the Magnolia Course (below) delight guests at Walt Disney World.



musical comedy revues, and Polynesian luaus on the beach are daily happenings in the "Vacation Kingdom," with special entertainment events taking place on a regular basis.

As guests shop in exotic bazaars, dine in unique restaurants, sample entertainment from around the "world," fish, swim, sail, golf, ride, or just relax on white-sand beaches and around graceful pools, pleasure assumes a truly magical quality at Walt Disney World.

After all, where else can one "wish upon a star" and have dreams really come true? 



Moonlight cruises on the Southern Seas depart nightly from the Polynesian Village and the Contemporary Resort-Hotel.

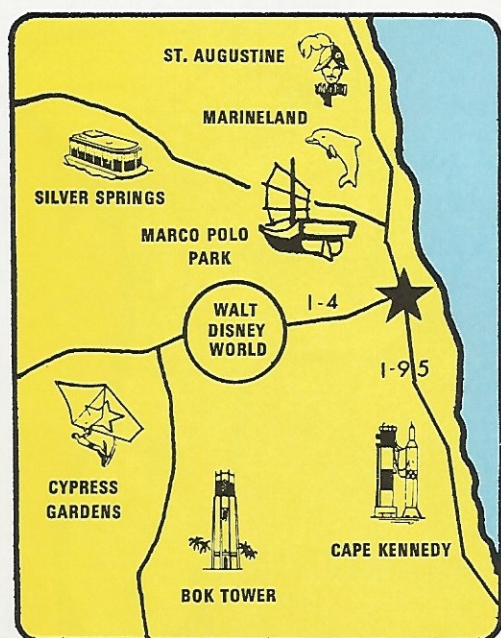
**room for everyone . . .
 . . . near everything !**



DAYTONA BEACH

RESORT AREA

On the "World's Most Famous Beach"



Sun, swim, surf, and DRIVE on 23 miles of FREE public beach where you'll find something for every taste from a fun filled Broadwalk to thrilling car races. Golf on 7 championship courses; fish from surf, bridges, piers, or deep-sea boats. There are fine shops, restaurants and nightclubs for your enjoyment . . . plus ample accommodations for any number of people. The Daytona Beach Resort Area has 20,000 modern hotel and motel rooms, geared to fit any budget — and any size group. There's no uncomfortable crowding here . . . we've got lots of sun, sand, sea, and rooms for everyone.

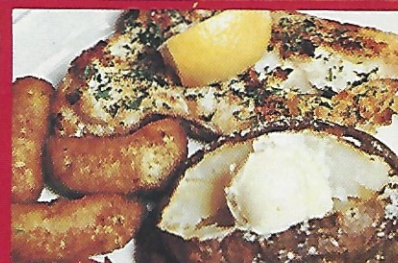
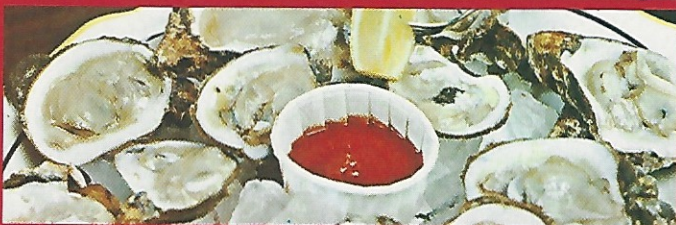
Write for FREE Color Brochure

DAYTONA BEACH RESORT AREA

P. O. Box 2169, Daytona Beach, Florida 32015

(Ormond by the Sea, Ormond Beach, Holly Hill, Daytona Beach, Daytona Beach Shores, South Daytona, Port Orange, Ponce Inlet)

Specify Type of Accommodation, Dates of Visit, and No. in Party.



Anywhere in the Southeast,
you're only a few miles from . . .

the **PERFECT PLACE** for **HUNGRY TRAVELERS**

We understand what it's like to find a good restaurant on the road. That's why on family vacation or on a business trip, you'll find that Red Lobster Restaurants are the perfect combination for hungry travelers: good food, family prices, informal atmosphere and prompt service.

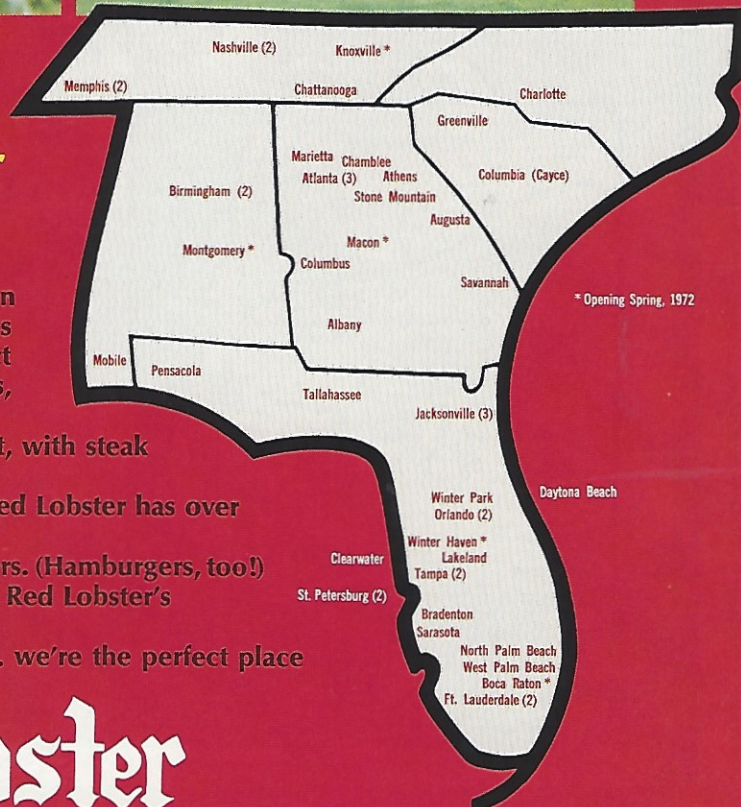
Our menu has the most delicious seafood you'll ever eat, with steak and chicken for the landlubber.

Wallet-conscious travelers love our low prices. Every Red Lobster has over fifteen dinners under \$2.

And we love kids. We've got six complete children's dinners. (Hamburgers, too!)

Everyone can relax in our friendly atmosphere. Plus . . . Red Lobster's prompt service won't disrupt your travel schedule.

When it's time for your next lunch or dinner, try us . . . we're the perfect place for hungry travelers.



Red Lobster

RESTAURANTS AND COCKTAIL LOUNGES



The Contemporary Resort-Hotel.

**Two superb resort hotels
and acres of splendid campground,
the question is:**

WHERE IN THE WORLD TO STAY?



The Grand Canyon Terrace restaurant.

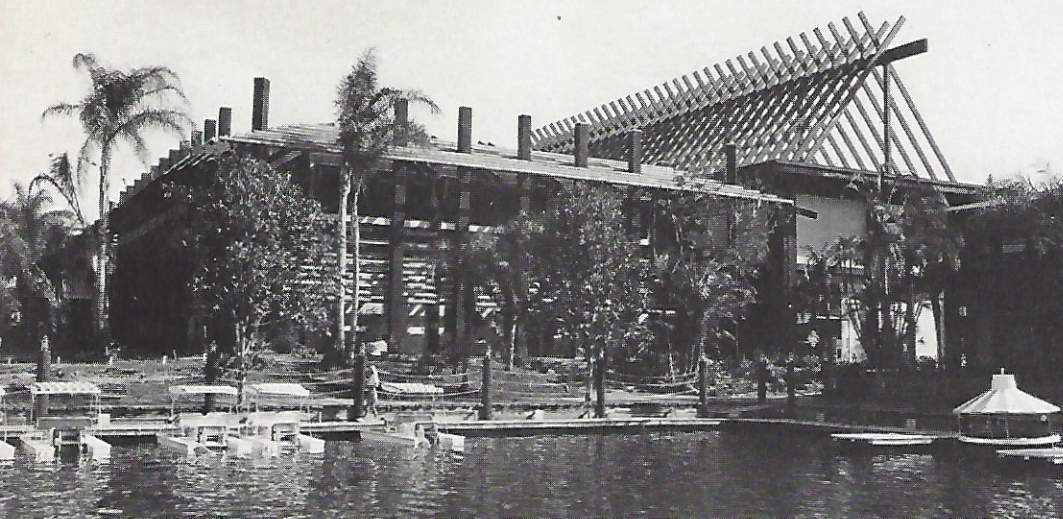
Individuals planning a vacation trip to Walt Disney World must ask themselves searching questions, for nowhere is there such an exciting choice of domicile as in the "Vacation Kingdom."

A secret wish to experience the romance of the South Seas or adventure into the realm of the future can be fulfilled at the Polynesian Village or the Contemporary Resort-Hotel. For those who yearn to return to nature, Fort Wilderness campgrounds offers some of the most beautiful scenery in Central Florida.

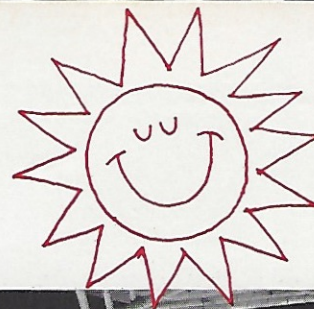
The futuristic, 1,057-room Contemporary Resort-Hotel is unique. Reaching 14 stories upward to the Top of the World penthouse-restaurant and lounge, its long, A-shaped main building contains an enormous interior concourse. Even the Walt Disney World Monorail Trains, gliding silently some 50 feet above ground level through the temperature-controlled Grand Canyon Concourse, seem miniature as they carry guests to and from the Polynesian Village and the Magic Kingdom theme park.

Located in the sloping walls of the main Tower Building and in two garden wings called Bayside North and Bayside South, guest rooms are large, ultra-modern in decor, and feature balcony views of beautiful Bay Lake and the Seven Seas Lagoon.

(Continued)



The Polynesian Village.



The sun-filled atrium of the Polynesian Village.

Shops, restaurants, lounges, theaters, recreational facilities, and entertainment are all "themed," bringing the world of tomorrow into the life of today.

Time takes on a leisurely tempo in the romantic South Seas atmosphere of the Polynesian Village. Guests staying in the 500 guest rooms located in seven "long-houses" enjoy evening luaus on the beach, swimming in tropical pools, and dining in exotic restaurants.

A variety of exclusive shops are located in the Great Ceremonial House, while The Outrigger Assembly House contains the luxurious Papeete Bay Verandah for dining and intimate lounges for relaxing.

As Polynesian entertainers perform authentic dances from Samoa, Tonga, and Hawaii beneath swaying palm trees, the enchantment of faraway islands captures the imagination, transforming Walt Disney World into a Polynesian paradise.

The beauty of Fort Wilderness campgrounds does not have to be imagined, it is real. Stands of cypress, pine, and other foliage native to Florida frame winding creeks, nature trails, and landscaped campsites.

Located on the south shore of 450-acre Bay Lake, Fort Wilderness offers the camper a total experience in outdoor living. A private beach for swimming and sunning, planned recreational activities, nightly campfire programs, nature films, and country-western entertainment are only a few features of this extraordinary camping complex.

Fort Wilderness guests also are provided with free transportation to all parts of the "Vacation Kingdom" and may enjoy the recreational facilities at both resort hotels.

Whether the prospective visitor to Walt Disney World decides on romance, adventure, or a return to nature, he can be certain of one thing: his choice will be the right one.

One of Florida's Great Attractions

- Spring of 10,000 Fish
- See It From Spectacular Underwater Observatory
- Wildlife in profusion along nature trail
- World-famed waterfowl Collection
- Scenic Boat Ride along Wilderness Waterway
- Dine Over Water
- Ask About Special Rates For Group Tours



WALK UNDER WATER

JUST NATURE'S BEAUTY COMBINED WITH EXCELLENT ACCOMMODATIONS AND EVERYTHING TO MAKE A WEEK OR A WEEKEND A MEMORABLE EXPERIENCE.

WE HAVE THE IDEAL PLACE, ATTRACTIVELY TUCKED AWAY ON THE HOMOSASSA RIVER ON FLORIDA'S NATURALLY BEAUTIFUL GULF COAST REGION

NO CROWDS OR TRAFFIC JAMS!



75 Miles N. of Tampa, St. Petersburg on U. S. 19
(904) 628-2474, P. O. Box 8, Homosassa Springs, Fla. 32647



Camping at Fort Wilderness.

ONLY
GREYHOUND
GIVES YOU...



Walt
Disney
World

REGULAR SERVICE...
SPECIAL SERVICE
DIRECT TO GATE...
PACKAGE TOURS...
ESCORTED TOURS.

Regular Service Greyhound takes you directly to the main gate on new, improved service.

Special Service Only Greyhound has daily round trip reserved space to the main gate from Daytona Beach, St. Petersburg, Tampa, Ft. Pierce, and Cocoa. One day unlimited use of monorail, trains, and watercraft, included. Plus admission to "Magic Kingdom" and nine admissions to Theme Park attractions. Special weekend service direct from Miami and nearby cities, Jacksonville, and St. Augustine, with all the features.

Package Tours With Greyhound, you will enjoy great scenery and sightseeing all the way. Enjoy an Amazing America 2-, 3-, or 4-day Walt Disney World vacation, with choice of hotel in Walt Disney World or in Orlando. Tour features vary with length of stay, but complete package holidays start at 2-days, \$29.15. 3-days, \$51.90. 4-days, \$72.95.

Escorted Tours Only Greyhound offers the Florida Carrousel. The tour with all the fun of Walt Disney World, plus more of Florida. From Orlando, Jacksonville, Miami, or Tampa-St. Petersburg. Visit Cape Kennedy, Cypress Gardens, Weeki-Wachee, Miami Beach, or as much more of Florida as you want. From 1 day at \$21.25 to 8 days at \$267.95.

RESERVATIONS: Greyhound Walt Disney World tours and services can be reserved through your nearest travel agent, Greyhound Travel Bureau or Greyhound Bus Station.

GREYHOUND

OFFICIAL GROUND TRANSPORTATION FOR WALT DISNEY WORLD.



(Continued from page 7)

More than 1,000 guests, sitting on padded cushions at long, low banquet tables, feasted royally on authentic South Seas delicacies, while hundreds of Polynesian entertainers performed the native dances of Tahiti, Hawaii, Samoa, New Zealand, and Bora Bora.

The luau was concluded with an electrical water pageant on the Seven Seas Lagoon starring King Neptune and his court of sea serpents, spouting whales, sea lions, mermaids, and other creatures from the deep. As the final lighted figure disappeared from the view of guests, a brilliant display of fireworks filled the skies of the "Vacation Kingdom," bringing the Polynesian Village dedication to a dramatic close.

The highlight of the three-day festivities and the climax of the Grand Opening was the formal dedication of Walt Disney World held in Main Street in the Magic Kingdom theme park.

After Roy Disney read the words of the bronze Dedication Plaque, five-hundred pigeons representing the symbolic "dove of peace" were released, signaling the beginning of a musical spectacular in which more than 5,000 performers sang, danced, and paraded from Town Square in Main Street to the Cinderella Castle.

Before he passed away late in December, Roy O. Disney, co-founder with his brother of Walt Disney Productions, wrote these words of dedication that symbolize so well "the Disney way":

WALT DISNEY WORLD

is a tribute to the philosophy and life of Walter Elias Disney . . . and to the talents, the dedication, and the loyalty of the entire Disney organization that made Walt Disney's dream come true. May Walt Disney World bring Joy and Inspiration and New Knowledge to all who come to this happy place . . . A Magic Kingdom where the young at heart of all ages can laugh and play and learn — together.

There were marching toy soldiers, silver knights on "horseback," Mickey Mouse riding and playing the world's largest drum, floats and performers re-

IN FLORIDA DRIVE YOUR OWN CAR THRU



LION COUNTRY SAFARI

AFRICAN WILDLIFE PRESERVE

WEST PALM BEACH AT ROYAL PALM BEACH

From the north via Florida Turnpike to Exit 40 (Palm Beach) or Exit 36 (Lake Worth)

OVER 100 LIONS ROAMING WILD—MEET YOU EYE-TO-EYE AT YOUR CAR WINDOW!

Spend an hour...or spend the day! Drive among the lions, rhino, giraffe, zebra, elephants... hundreds of African animals living free!

Be sure to bring your camera.

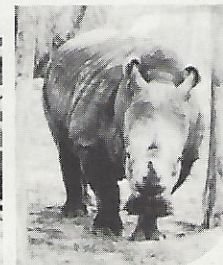
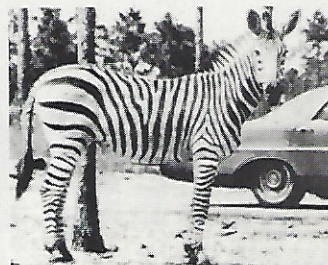
OPEN RAIN OR SHINE!

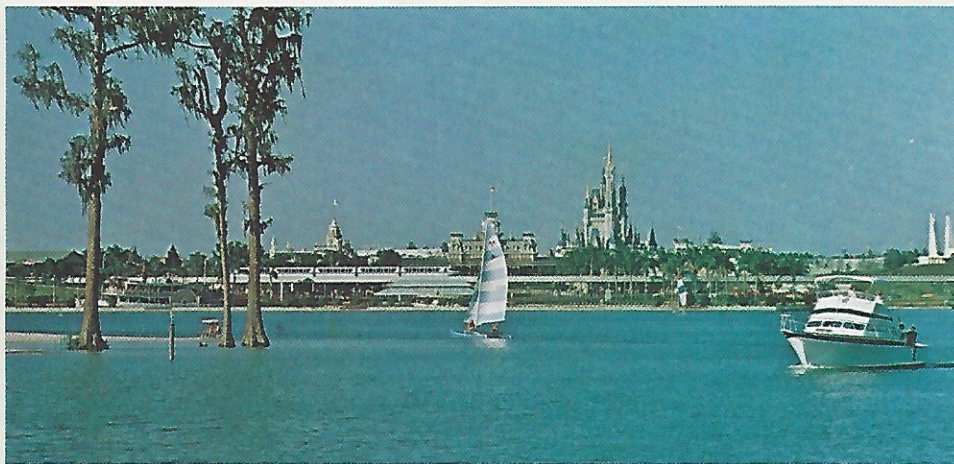
See PETS CORNER

Visit the CURIO HUT...REPTILE FARM...

HIPPO ISLE BOAT RIDE

OPEN 9 A.M. — LAST ADMISSION 5:30 P.M.





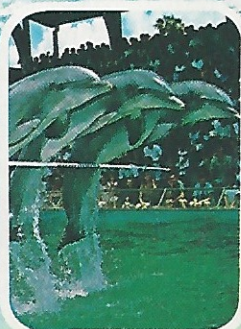
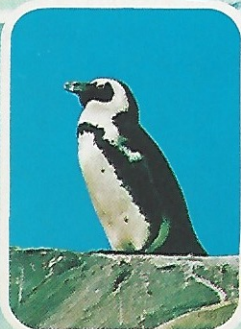
presenting the six themed "lands" of the Magic Kingdom, all of the famous Disney characters, and there was "Music Man" Meredith Willson leading a 1,076-piece marching band.

As the parade reached the end of Main Street and assembled in the Plaza, a 1,500-voice choir led the revelers in a medley of famous songs from classic Disney films, ending with the poignant "When You Wish Upon A Star," as 50,000 balloons rose like multi-colored bubbles over the "Vacation Kingdom."

The Grand Opening of Walt Disney World was over. It had been a special time, a moment in history that many had worked toward and to which many had looked forward. The promises had been kept, and the obligations had been met.

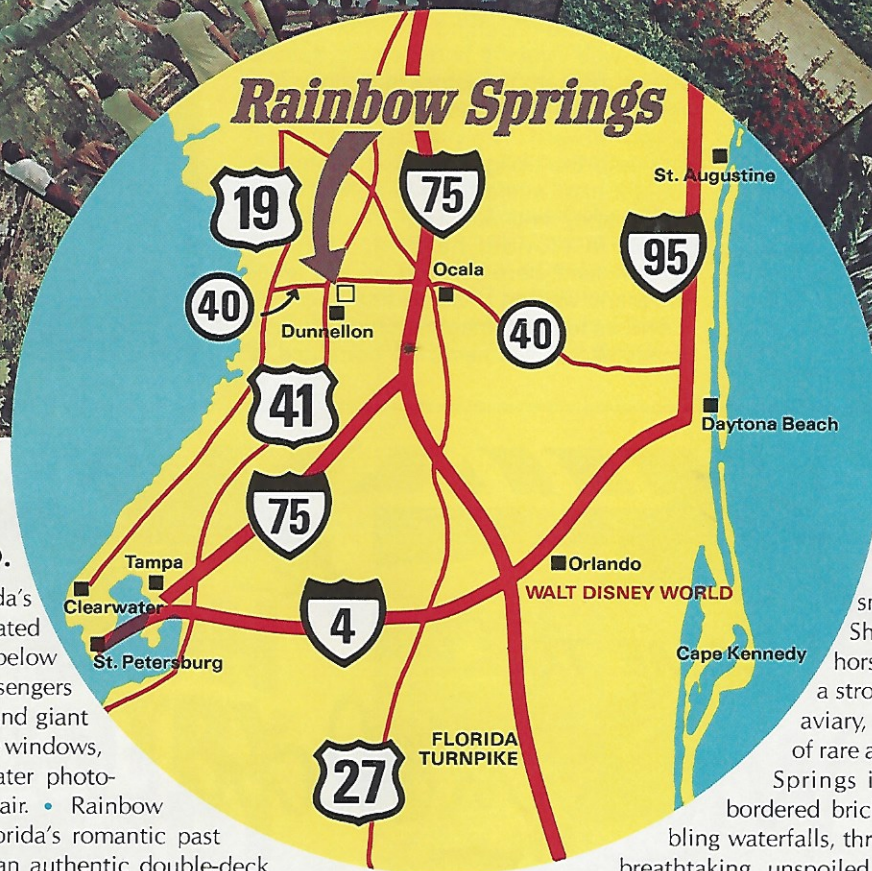
But it also was a beginning. For when Walt Disney first spoke of the land acquired in Florida, he said: "There's enough land here to hold all the ideas and plans we can possibly imagine."

And as long as imagination exists, Walt Disney World will never be complete. 🐭



**World's original marine attraction. Six shows daily.
On the ocean between St. Augustine & Daytona Beach.**

DON'T MISS RAINBOW SPRINGS ON YOUR FLORIDA VISIT!



**Only 90 minutes from
WALT DISNEY WORLD.**

Rainbow Springs is Florida's only Underwater Cruise. Seated in perfect comfort five feet below the surface of the water, passengers view fifty varieties of fish and giant turtles through huge picture windows, and take exciting underwater photographs in water clear as air. • Rainbow Springs is a cruise into Florida's romantic past aboard "Rainbow Queen," an authentic double-deck stern-wheel riverboat. • The Rainbow Raft Adventure is a trip into the past too, as it explores unspoiled bayous of lovely Rainbow River. • Rainbow Springs is the Forest Flite monorail, a dreamy trip through the treetops on a leaf-like magic carpet. • Rainbow Springs is a rip-

snortin', thrill-a-minute Rodeo Show, with its own quarter horse farm. • Rainbow Springs is a stroll through the world's tallest aviary, in company with hundreds of rare and colorful birds. • Rainbow Springs is miles of shaded, flower-bordered brick paths that wind past tumbling waterfalls, through vista after vista of the breathtaking, unspoiled natural beauty that earned Rainbow Springs the title of Florida's most beautiful attraction. • Rainbow Springs is located on U.S. 41 (4 miles north of Dunnellon), and just minutes off I-75, the main artery serving Walt Disney World. • Open daily 9 a.m. to 6 p.m.



RAINBOW SPRINGS • P.O. BOX 98 • DUNNELLON, FLORIDA 32630 • (904) 489-2256

VACATIONLAND HIGHLIGHTS

Your Guide to Vacationland Attractions

FLORIDA

Busch Gardens

Located in Tampa, Busch Gardens is a surprising array of trees, colorful flowers, and animals. Features include: an animal zoo, a monorail safari through the "African Veldt," and a bird show starring trained cockatoos and macaws. Visitors also can tour the brewery and dine at Old Swiss House Restaurant. Open daily from 9 a.m. to 4 p.m. Admission charged.



Citrus Tower

A quiet elevator takes visitors to the highest observation point in Florida for a breathtaking view of lakes, hills, and more than 17,000,000 citrus trees. Located at Clermont, Citrus Tower also features a restaurant and lounge, citrus processing exhibit and sales facility, gift shop, glass artists' workshop, and a circus arcade. Elevator tower open 7:30 a.m. to sunset. Admission charged.

Cypress Gardens

World-famous attraction, located near Winter Haven, features spectacular water-ski shows four times daily at 10 a.m., 12 noon, 2 p.m., and 4 p.m. Cypress Gardens also includes a new 1,000-seat marine stadium, acres of newly planted flowers, and pleasure-boat rides through tropical canals. Guest also can dine at Palm Terrace restaurant and visit a special children's attraction, Fantasy Valley. Open sunrise to sunset. Admission charged.

Kennedy Space Center

Visitor Information Center, located south of Titusville, includes free exhibits of spacecraft, free movies, and free science demonstrations. Bus tours include photo stops at Vehicle Assembly Building, launch pad 39A, and many historic landmarks of the space program at Cape Kennedy. Guests also may drive cars through Spaceport on Sundays from 9 a.m. to 3 p.m. Admission charged for bus tours.



Lion Country Safari

Guests can drive through African-like setting featuring more than 100 free-roaming lions. Located at West Palm Beach, Lion Country Safari also features zebra, elephants, giraffes, a reptile wonderland, hippo island boat rides, and a special area for feeding small animals. Open daily at 9 a.m. Admission charged.

Marineland of Florida

Marineland, the world's original marine attraction, is located 18 miles south of St. Augustine on Highway A1A. Ten exhibit areas, featuring educated porpoises and whales, are open daily with shows at: 9:30, 11, 12:30, 2, 3:30, and 4:50 p.m. Also on display are Amazon freshwater porpoises, electric eels, and aquatic birds. Admission charged.

Miami Seaquarium

Miami Seaquarium is located on 60 acres of land on the Rickenbacker Causeway. Featuring the largest killer-whale stadium in the Southeastern United States, it also is the home of television star, "Flipper." Unusual marine-life exhibits and special entertainment can be seen daily. Open 9 a.m.; last complete tour, 4 p.m.

Masterpiece Gardens

Highlight of Masterpiece Gardens, located at Lake Wales, is the 300,000-tile mosaic reproduction of Leonardo da Vinci's "Last Supper." Also featured are: a skyride, flower gardens, a museum of da Vinci's inventions, a mosaic studio with working artisans, and train rides through jungles populated with animated animals. Open daily from 8:30 a.m. to 6 p.m. Admission charged.



Rainbow Springs

A beautiful natural spring in a forest setting is the highlight of Rainbow Springs, located off U.S. 41 near Dunnellon. Other features include underwater cruises, monorail trips through the forest, rodeo shows, and animal and bird parks. Open daily from 9 a.m. to 6 p.m. Admission charged.

Ringling Museums

John Ringling's magnificent gift to Florida is located on U.S. 41, three miles north of Sarasota. Included are: the Museum of Art, housing the nation's most important Baroque art; the 18th century Asolo Theater; the palatial Ringling residence, "Ca' d'Zan;" and the Museum of the Circus. Open Monday through Friday from 9 a.m. to 10 p.m., on Saturdays, from 9 a.m. to 5 p.m., and on Sundays, from 1 p.m. to 5 p.m. Adult admission charged. Children under 12 free.

Silver Springs

A wide variety of attractions are featured at this 100-acre landscaped park, located at Ocala. Included are: Glass Bottom Boat Rides, Ross Allen's Reptile Institute where rattlesnakes are milked for their venom, the Early American Museum, the international Deer Ranch, and carved three-dimensional scenes from the life of Christ displayed in lighted chapels. Open at 8 a.m. Admission to park, free. Rides, extra.



Singing Tower

This 205-foot tower, located at Lake Wales, was built in 1929 and presented to the American people by writer Edward W. Bok. The tower, which is surrounded by nature trails, flowers, and birds, features Carillon recitals at 3 p.m. daily. Open daily from 8:30 a.m. to 5:30 p.m. Admission free. Parking, 50c.

Six Gun Territory

Located at Ocala, this attraction recreates the spirit and excitement of the Old West. Featured is a full-scale replica of a frontier town, including church, bank, newspaper office, and blacksmith shop. Guests can watch Indians stage war dances, can-can dancers perform in a "soft-drink-only" saloon, and good guys and bad guys shoot it out on the streets. Also features 15-ride Funland. Open daily. Admission charged.

Sunken Treasure Museum

Treasure recovered from sunken Spanish fleet of 1715 is on display at this museum, located at Fort Canaveral, north of Cocoa Beach. Dioramas are featured, depicting the story of the Spanish in Florida, the sinking of the fleet, and the recovery operations. Open daily from 9:30 a.m. to 5:15 p.m. Admission charged.



Weeki Wachee Springs

Live "mermaids," performing in an underwater show, can be viewed by guests through huge plate-glass windows. Located 12 miles west of Brooksville at intersection of U.S. 19 and Florida 50. Open daily at 9:00 a.m., shows from 9:30 a.m. to 5 p.m. Admission charged.

Ybor City

Located off Interstate 4 near downtown Tampa, Ybor City is one of the most historically authentic cities in America with its quaint shops, art galleries, and world-famous restaurants such as the Columbia and Las Novedades. Known as Tampa's Latin Quarter, it was named for Spanish-born Vicente Martinez Ybor, who settled there in 1885.

GEORGIA

Georgia's Stone Mountain

The largest solid mass of exposed granite in existence, covering 583 acres, is the center of a 3,200-acre entertainment-recreation complex. Featuring world's biggest sculptured art work, museums, lively rides and attractions, and outdoor recreation. Open daily from 10 a.m. to 5:30 p.m. from Labor Day to June; and from 10 a.m. to 9 p.m. in the summer. Admission charged.

(Continued)

Looking for an interesting and reasonably priced attraction geared for family fun?

Then see...

Masterpiece GARDENS



LAKE WALES, FLORIDA

... only 35 minutes from
Walt Disney World

DISCOVER ALL THIS ...

- * Your admission ticket admits you to the Masterpiece grounds and then all the attractions and rides are free — spend an hour or a day.
- * Presentations of the world-famous 300,000 piece mosaic of da Vinci's "Last Supper" — every thirty minutes in a magnificent garden setting.
- * Ride the Tree Top Sky Ride over the gardens.
- * Take the Train Tour through a Florida jungle — and see a 4,000-year-old cypress tree.
- * Have a barrel of fun feeding monkeys loose in the jungle — pet and feed tame deer — see alligators, fox, bear, bobcats in the animal compound.
- * Wander leisurely through the colorful gardens, or on nature trails in a real Florida jungle untouched by man.
- * Visit the snack bar — Art and Hobby Shop — Gift Shop — or picnic at our picnic tables.

A Popular Florida Attraction
for over 20 years ...

OPEN EVERY DAY
8:30 A.M. — 5:30 P.M.

ADMISSION PRICE

Adults \$2.00 Children 6-17 \$1.00
Children under 6 free when accompanied by parents.

LOCATION

35 miles from Walt Disney World.
Take Highway 27 south to Lake
Wales or I-4 west to Highway 27
south to Lake Wales. (Follow signs.)

For group information write Masterpiece Gardens,
P. O. Box 1230, Lake Wales, Florida, or call
(813) 676-2518

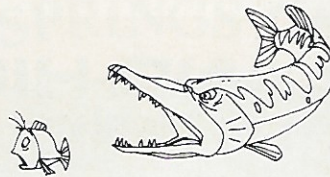
Recommended by Florida State Chamber of Commerce,
Lake Wales Chamber of Commerce, Florida
Attractions Association.

Visit
Masterpiece
GARDENS



LAKE WALES, FLORIDA

Other attractions nearby include Cypress Gardens,
Bok Singing Tower and in winter season, Black
Hills Passion Play — all just minutes away.



Okefenokee Swamp Park

A National Wildlife Refuge located eight miles south of Waycross, Georgia on highways U.S. 1 and U.S. 23. Featuring a 90-foot observation tower, animal exhibits, an alligator pool, a serpentarium, bird sanctuaries, picnic areas, gift shops, and gardens. A two-mile boat trip is included in the price of admission. Open from 8 a.m. to sunset.

Six Flags Over Georgia

Located 10 minutes from downtown Atlanta on I-20, Six Flags Over Georgia features rides, attractions, live shows, and lively revues in a spectacular setting, with one complete theme section for each flag which has flown over Georgia. Open weekends, April 10 through May 30, from 10 a.m. to 10 p.m. Open daily, June 4 through August 31, from 10 a.m. to 10 p.m. Admission charged.

ALABAMA

Alabama Space and Rocket Center

America's largest missile and space exhibit is located 95 miles from Birmingham and five miles west of Huntsville. Featured are: an exhibit building with actual space equipment and hardware; a rocket area; the actual Apollo-Saturn V Moon Rocket, as large as a football field; a full-size moon crater containing Apollo landing craft and astronaut exploration equipment, and a missile area. Open from 10 a.m. to 5 p.m. (September-May); and from 10 a.m. to 8 p.m. (June-August). Admission charged.

Bellingrath Gardens and Home

Located a few miles south of Mobile, the Bellingrath estate is 65 acres of landscaped gardens with swan-filled pools, bayous, and graceful walks. The home contains fine antiques and outstanding collections of rare porcelain, china, and silver. Garden hours: 7 a.m. until sunset. Home hours: 8 a.m. to 5 p.m. daily. Admission charged.

LOUISIANA

The French Quarter

Long a famous and well-known section of the 250-year-old city of New Orleans, the French Quarter is the home of Dixieland jazz, excellent restaurants, numerous shops, splendid architecture, historical buildings, and museums. Guided tours are available through travel agencies in New Orleans.

Rosedown Plantation and Gardens

One of the most famous antebellum mansions on historic River Road near St. Francisville, Rosedown is a magnificent showplace set in a 30-acre garden which was inspired by the gardens of Versailles. A museum of plantation life as it was before the Civil War, the Rosedown Plantation and Gardens reflect the gracious living and luxurious taste of the Old South. Open daily from 9 a.m. to 5 p.m. Admission charged.



Imperial House

"Where the
Royal Rib
Reigns
Supreme"

Restaurant / Cocktail Lounge
STEAKS & SEAFOOD
CHILDREN'S MENU • OPEN 7 DAYS
Overlooking beautiful Lake Killarney

HIGHWAY 17-92, WINTER PARK, FLA. • TEL. 644-8173



Dick Sipple's

Winning Awards
Since 1920

GARDEN SEAT

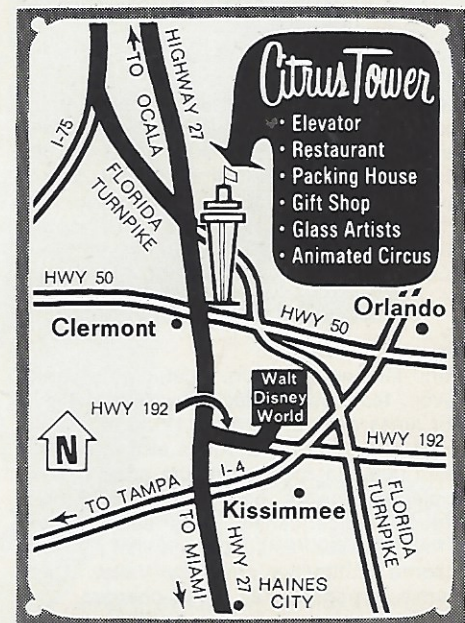
LUNCHEON • COCKTAILS • DINNER
Continental and American Cuisine
Children's Menu • All Credit Cards

1234 DRUID ROAD, ON THE BAY, CLEARWATER

D'Agostino's Restaurant & Cocktail Lounge

villa NOVA

Open Daily from 6:00 P.M. Closed Sundays
20 minutes from Walt Disney World; East on I-4
to Lee Road, Exit Right to Highway 17-92
Winter Park, Florida Telephone 644-2060



relax in

Lake Wales

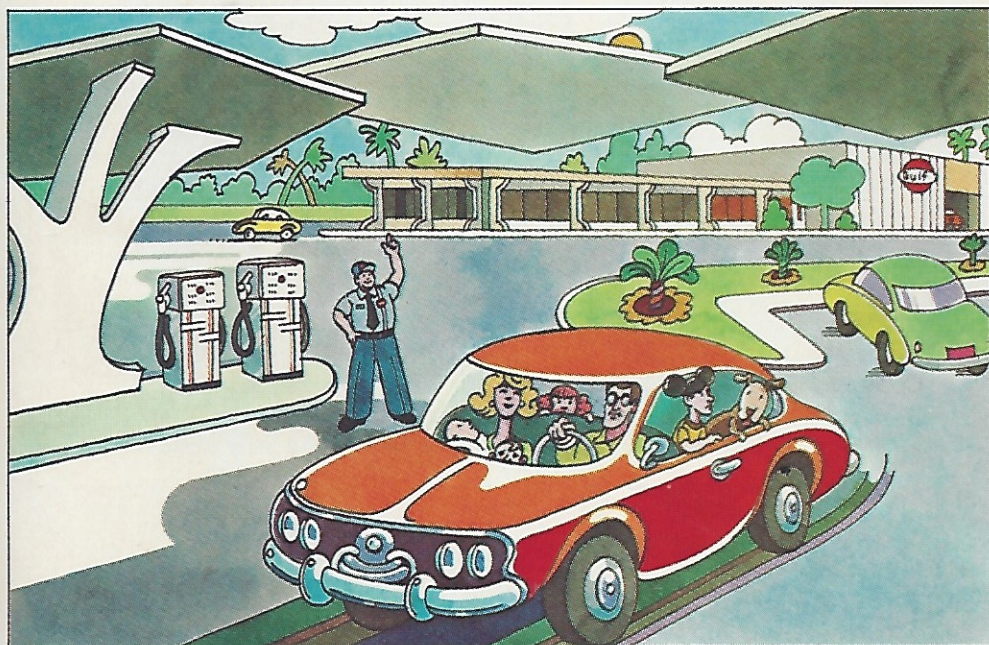
-it's refreshing!

Minutes from:

6 OUTSTANDING ATTRACTIONS
23 MAJOR LAKES FOR:
BOATING □ SWIMMING
SPORTSFISHING

For fun attractions
and housing information write:
Lake Wales Area Chamber of Commerce
P.O. Box 191, Lake Wales, Florida

YOU MAY NEVER BE READY TO LEAVE Walt Disney World BUT WE'LL MAKE SURE YOUR CAR IS.



Orlando, Florida may not be very near your home. Fortunately, Walt Disney World is worth driving a long distance to see.

But after the long trip there, you'll owe your car a little vacation — at America's most beautiful hospitality center for cars. This gigantic "super service station" has separate gasoline service islands for cars and

trucks, twelve repair bays and a fully-automated car wash that will wax your car too. There's also a salesroom with a full line of Disney's novelties and souvenirs, vending machines and a complete baby care center on the premises.

So you won't have any trouble finding this new Gulf facility, we've put it right next to Walt Disney World's main parking lot. And so you won't have to walk after you leave your car, there's a service car to take you to the boat or monorail that go to the park.

Conveniently near the entrance to Theme Park is the Gulf hospitality center (for people).

There, our friendly staff will give you touring information for the rest of your trip.

When the time finally comes to leave Walt Disney World, just come back to us and pick up your car. We will have made sure it feels as good as you do.



GULF OIL COMPANY—U.S.

Enjoy Cypress Gardens



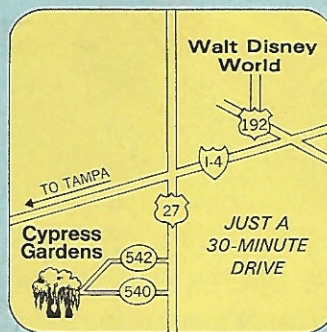
Beautiful Cypress Gardens

**If you like beauty...
you'll love our Gardens!**

Stroll along the winding walkways,
and see flowers from around the world.
Or take a quiet electric boat tour
thru palm fringed lagoons.

**If you like excitement...
you'll love our ski show!**

Aquamaids and Champions will delight
you with a graceful ballet, terrific
Delta Wing Kite flying and zany clowns.



Four water ski shows daily

10 a.m. - Noon - 2 & 4 p.m.

One price includes Gardens and Ski Show

Open 8 a.m. every day

Take I-4 West from Walt Disney World

