



Master Event Script, Procedures and Itinerary

Saturday, Sunday and Monday — October 23, 24 and 25, 1971

Walt  Disney World FLORIDA



THE OPENING SPECTACULAR
and
GRAND DEDICATION CEREMONY
of
WALT DISNEY WORLD

Saturday, Sunday, and Monday — October 23, 24, and 25, 1971

WALT DISNEY WORLD
FLORIDA



A.

DAY ONE

- I. ITINERARY FOR THE WORLD SYMPHONY ORCHESTRA
VISIT TO WALT DISNEY WORLD
- II. GALA DEDICATION CONCERT
 - A. REHEARSAL SCHEDULE
 - B. PERFORMANCE SCRIPT
- III. CHAMPAGNE RECEPTION
- IV. ITINERARY FOR THE WORLD SYMPHONY ORCHESTRA
DEPARTURE FROM WALT DISNEY WORLD



SATURDAY - OCTOBER 23, 1971

GALA DEDICATION CONCERT
THE WORLD SYMPHONY ORCHESTRA
Arthur Fiedler, Conductor

At Eight O'Clock

*

Black Tie

The Castle Forecourt
in The Magic Kingdom

With representative members
from major Symphony Orchestras of the World,
brought together for the first time
in tribute to Walt Disney and commemorating the Dedication
of WALT DISNEY WORLD

Immediately following the Gala Dedication Concert,
a Farewell Champagne Reception on Main Street, U.S.A.
will honor the individual members of
The World Symphony Orchestra, its Conductor and guest artists

October 22, 1971

ARRIVAL OF THE WORLD SYMPHONY ORCHESTRA AT WALT DISNEY WORLD

10:00 p.m.

Orchestra to leave New York in one special Eastern Airlines DC-8 jet for Orlando, Florida.

Cocktails and dinner to be served aboard the plane.

12:00 midnight

Arrival at Orlando McCoy Airport.

Press Reception

On arrival, Orchestra to go by bus to Polynesian Village Hotel at Walt Disney World.

Buses to meet airplane.

On check-in at Polynesian Village Hotel, all performance garment bags with White Tie or National Dress clothing which needs to be cleaned should be left with company stage manager in hotel lobby for cleaning. Special cleaning slips to be provided.

October 23, 1971

WORLD SYMPHONY ORCHESTRA VISIT TO WALT DISNEY WORLD

7:00 a.m. to 10:30 a.m.

BREAKFAST

Papeete Bay Restaurant
Polynesian Village Hotel

Individuals to identify themselves by name list
and meal ticket whenever they choose to have
breakfast.

This time free and unscheduled.

9:30 a.m.

Wake-up ready reminder call

10:30 a.m. to 3:30 p.m.

TOUR OF WALT DISNEY WORLD

Orchestra to meet in lobby of Polynesian Village
Hotel where they will be met by a score of Walt
Disney World Hostesses who will conduct them in
small groups in an all day tour of the entire
complex of Walt Disney World.

Travel attire

Tour will begin via monorail around entire pre-
mises from Polynesian Village.

Luncheon to take place during tour at various
restaurant locations chosen by each touring
group.

3:30 p.m.

All tour groups to return to Polynesian Village
Hotel.

3:30 p.m. to 4:30 p.m.

Orchestra to change into performance attire in
their rooms.

A. REHEARSAL
Castle Forecourt
Walt Disney World

4:00 p.m.

Physical set-up for World Symphony Orchestra and seats for audience and all decorative items possible to be in place.

Sound test to be completed.

4:30 p.m.

Orchestra to report to Lobby Area of Polynesian Village Hotel in performance attire with instruments.

Performance attire

4:30 p.m. to 5:00 p.m.

Orchestra to go by buses from Polynesian Village Hotel to tunnel entrance behind Fantasyland Basement to unload for rehearsal and performance.

Orchestra instrument cases, etc., to be stored in the castle storage area adjacent to the castle entrance.

5:30 p.m. to 6:30 p.m.

REHEARSAL
Castle Forecourt
Walt Disney World

Performance attire

Rehearsal to begin with practice entrance of all members of the orchestra through the main castle doors and down the circular castle ramps to position in the forecourt.

THE OFFICIAL PORTRAIT of The World Symphony Orchestra at Walt Disney World will then be taken.

The musical rehearsal to follow will be for television and live sound balance.

The guest seating area and hub area of The Magic Kingdom will be restricted from entrance by guests.

Immediately following the rehearsal, the orchestra will exit via the castle center doors to return their instruments to the talent dressing rooms and band rooms in the basement where they will be secured during dinner.

6:30 p.m. to 7:30 p.m.

DINNER
King Stefan's Banquet Hall
Cinderella's Castle
Walt Disney World

Performance attire

A special dinner party honoring the World Symphony Orchestra and its conductor, hosted by the members of the Disney family.

The Walt Disney World madrigal singers to perform during dinner.

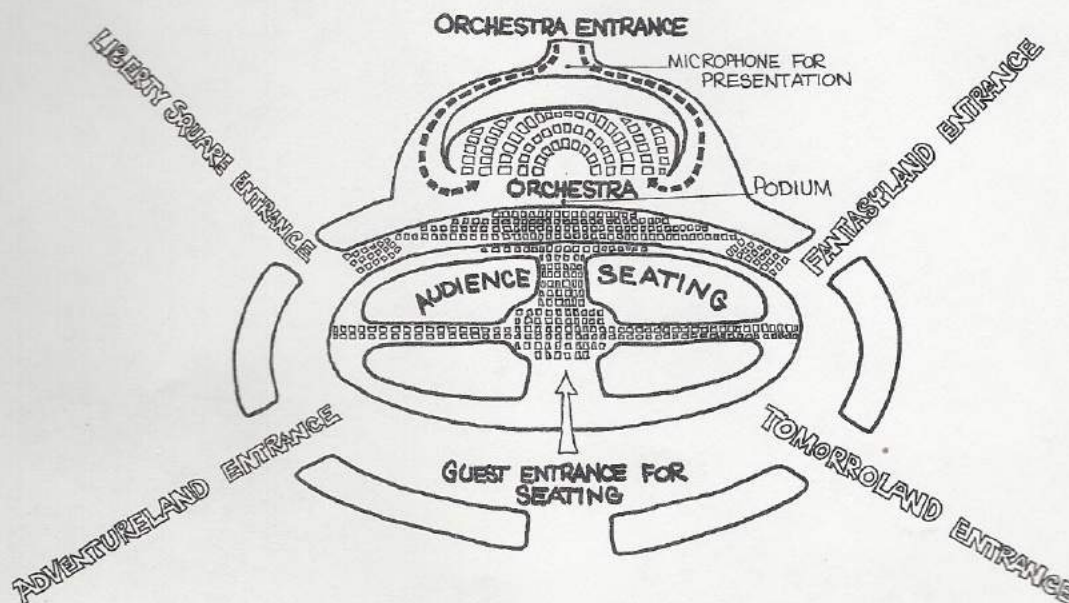
6:30 p.m. to 7:00 p.m.

Placement of all final decorative items, stanchions, etc., in castle and hub areas.

7:40 to 8:00 p.m.

Orchestra to prepare for performance in talent dressing rooms and band rooms.

WORLD SYMPHONY ORCHESTRA SEATING/STAGING PLAN



B. THE GALA DEDICATION CONCERT

The Castle Forecourt
 The Magic Kingdom
 Walt Disney World

THE WORLD SYMPHONY ORCHESTRA
 Arthur Fiedler, Conductor

Performance attire - White Tie or National Dress

7:00 p.m.

International guests to be admitted to guest seating area - The Hub

7:40 p.m.

Orchestra to line up in entrance order inside Cinderella's Castle Vestibule.

Tympanist to position in Castle forecourt.

8:00 p.m.

1. At precisely 8:00 p.m. the taped Westminster Carillon to chime proclaiming the hour.
2. Opening backstage announcement

NARRATOR:

"GOOD EVENING, LADIES AND GENTLEMEN . . . RARELY IN THE ANNALS OF MUSIC HAS THERE BEEN AN EVENT TO COMPARE TO THE FORMATION OF AN INTERNATIONAL SYMPHONIC ENSEMBLE COMPOSED OF DISTINGUISHED MUSICIANS FROM NATIONS THROUGHOUT THE WORLD.

THE WORLD SYMPHONY ORCHESTRA HAS BEEN ORGANIZED UNDER THE AUSPICES OF THE FEDERATION OF PEOPLE TO PEOPLE PROGRAMS BY THE COMMITTEE FOR THE WORLD SYMPHONY ORCHESTRA. (ONE HUNDRED THIRTY PLUS) _____ ORCHESTRAL MUSICIANS FROM EVERY CORNER OF THE

GLOBE HAVE JOINED TOGETHER TO AFFIRM THE UNIVERSAL MEANING AND WORLD WIDE HERITAGE OF THE INTERNATIONAL LANGUAGE OF MUSIC . . . AND TO PROMOTE UNDERSTANDING AND AFFECTION BETWEEN PEOPLES. EACH MEMBER OF THE WORLD SYMPHONY ORCHESTRA SERVES AS A MUSICAL AMBASSADOR REPRESENTING, THROUGH HIS OWN ARTISTRY, THE MUSICAL TRADITION OF HIS OWN ORCHESTRA, CITY, STATE AND COUNTRY.

AND NOW, LADIES AND GENTLEMEN, MAY WE PRESENT THE DISTINGUISHED MEMBERS OF THE WORLD SYMPHONY ORCHESTRA."

3. Tympani prelude to begin.

On the opening tympani roll, the center Castle doors to open.

4. On individual introduction announcements by backstage announcer, each orchestra member to enter alternately through center Castle doors down respective right and left circular Castle ramps to stand by their chair in the Castle forecourt facing front.

Each musician to enter carrying his instruments. All fixed instruments to be preset.

Announcement to include:

Musician's name
His sponsoring Orchestra
His city, state, country

Order of entrance to be in alphabetical order of musicians by their last name.

The Concertmaster for The World Symphony Orchestra to be the last to be introduced.

5. As soon as the Concertmaster has reached his seat, the tympani to begin a crescendo roll, peaking and then tapering for the following announcement:
6. Announcement of The World Symphony Orchestra by backstage announcer.

NARRATOR:

"LADIES AND GENTLEMEN . . . THE WORLD SYMPHONY ORCHESTRA."

On end of applause at this point, the orchestra to be seated on signal from the Concertmaster.

7. Orchestra to tune for approximately 45 seconds at cue from Concertmaster.
8. On silence called by the Concertmaster, announcement of conductor by backstage announcer.

NARRATOR:

"LADIES AND GENTLEMEN . . . THE CONDUCTOR OF THE WORLD SYMPHONY ORCHESTRA, MAESTRO . . . ARTHUR FIEDLER."

9. Conductor - Arthur Fiedler - to enter on introduction from center Castle doors via stage right Castle ramp to podium.

As the conductor enters, the two center Castle doors to close.

PROGRAM

Fanfare for the Common Man	Copeland	3 minutes
Festive Overture, Op. 96	Shostakovitch	6 minutes
Prelude and Love-Death, from "Tristan and Isolde"	Wagner	16 minutes

"Pines of Rome", Symphonic Poem	Respighi	20 minutes
I. The Pines of the Villa Borghese		
II. Pines near a Catacomb		
III. The Pines of the Janiculum		
IV. The Pines of the Appian Way		

Final Dance (Malambo), from "Estancia"	Ginastera	4 minutes
---	-----------	-----------

Suite from "Gaité Parisienne"	Offenbach	12 minutes
-------------------------------	-----------	------------

Overture - Allegro Brillante - Polka -
Galop - Valse - March - Can-Can - Finale

(Note: Above timings are approximate)

A. Encore #1 (To be announced)

B. Encore #2 "It's a Small World"

To be introduced by the conductor as a special thank you by the orchestra for the hospitality and guidance given by Walt Disney World to make this event possible.

At the Rubato of "It's a Small World", cue to be given to fire special aerial pyrotechnical display from behind Cinderella's Castle signaling the close of the performance.

9:30 p.m.

On end of "It's a Small World", the center Castle doors to open.

On end of performance, Orchestra to rise for bow cued by Conductor and to remain standing.

Conductor to take his bows in front of Orchestra until he is ready to exit for the final time. Then, he will exit via the stage right Castle ramp.

As he moves up ramp, Mr. Donn Tatum, President of Walt Disney Productions, and Mickey Mouse, carrying Dedication Plaque, to enter via center Castle doors to stand at microphone fixed at top center to ramp above the orchestra.

NARRATOR:

"LADIES AND GENTLEMEN, THE PRESIDENT OF WALT DISNEY PRODUCTIONS, DONN TATUM."

ACKNOWLEDGMENTS AND PRESENTATION:

Donn Tatum

1. Expression of appreciation to the numerous American corporations, citizens and governmental agencies who have made this historical musical happening a reality through People-to-People.
2. Presentation and reading of plaque to be permanently placed in the Castle Forecourt to mark this occasion:

On this Site

The World Symphony Orchestra

Performed a Gala Dedication Concert

In Tribute To

WALT DISNEY

Celebrating the

Grand Opening Of

Walt Disney World

October 23, 1971

"It's a Small World"

ACKNOWLEDGMENT On behalf of
THE WORLD SYMPHONY ORCHESTRA:

Arthur Fiedler

INTRODUCTION OF ROY O. DISNEY
Chairman of the Board
Walt Disney Productions

Donn Tatum

On introduction, Roy O. Disney to enter to
microphone via Castle center doors.

ACKNOWLEDGMENTS:

Roy O. Disney

INVITATION TO CHAMPAGNE FAREWELL RECEPTION
HONORING THE WORLD SYMPHONY ORCHESTRA

Donn Tatum

At this point, the Orchestra will begin exiting en masse via the right and left Castle ramps to the center Castle doors to place their instruments in the talent dressing rooms and the band rooms prior to attending the reception.

TELEVISION AND MUSICAL TAPING

Under the direction of Robert Scheerer

The entire performance of the World Symphony Orchestra at Walt Disney World will be taped for television by six cameras for use as follows:

1. Two and one-half minutes for inclusion in the Walt Disney World Grand Opening Television Spectacular to be aired over NBC on Friday night, October 29, 1971, at 8:00 p.m.
2. The entire performance to be taped so that it might be used in its entirety or portions thereof by the following:
 - a. For use on a public service basis by the 210 educational TV stations around the country under the Public Broadcast System on Thanksgiving Night, November 25, 1971 from 7:00 to 9:30 p.m.

CONTACT: Mr. Hartford Gunn, President
Public Broadcasting System
955 L'Enfant Plaza North
Washington, D.C.
202/484-9500
202/484-7785

Tapes to be edited and produced for the Public Broadcasting System by KCET educational television station in Los Angeles. Dr. James Loper at KCET to serve as producer. 213/466-4212

- b. After the public service tape has been produced, it would also be offered on a non-commercial basis to TV stations around the world by USIA through the normal process of their foreign posts.
 - c. Also to be offered abroad via Armed Forces Radio and Television Services.

CHAMPAGNE FAREWELL RECEPTION
for
THE WORLD SYMPHONY ORCHESTRA

(Location to be announced)
The Magic Kingdom
Walt Disney World

9:45 p.m. to 11:00 p.m.

Champagne to be served in glasses with ribbon
toast cards to The World Symphony Orchestra and
including inside the two verses of "It's A Small
World":

"It's a world of laughter, a world of tears
It's a world of hopes and a world of fears.
There's so much that we share that it's time
we're aware
It's a Small World after all.

There is just one moon and one golden sun
And a smile means friendship to ev'ry one.
Though the mountains divide and the oceans
are wide,
It's a Small World after all."

Strolling string group to perform throughout
reception.

11:00 p.m.

Following the reception the Orchestra to leave
via busses at rear of Fantasyland Basement to
return to Polynesian Village Hotel. Remainder
of evening is free.

October 24, 1971

DEPARTURE OF WORLD SYMPHONY ORCHESTRA FROM WALT DISNEY WORLD

7:00 a.m.

Wake-up call.

7:45 a.m.

All personal luggage except instruments and performance attire in clothes bags and tote bags to be taken to lobby of Polynesian Village Hotel to be moved to airport.

8:00 a.m.

Entire orchestra company to leave Polynesian Village Hotel carrying instruments and performance attire in clothes bags and tote bags.

Travel attire

8:30 a.m.

Eastern Airlines Charter Plane to leave Orlando McCoy Airport for Washington, D.C. carrying entire company of The World Symphony Orchestra.

BREAKFAST

To be served aboard the plane en route to Washington, D.C.



B.

DAY TWO

- I. PRIVATE RECEPTION
- II. OPENING OF THE CONTEMPORARY RESORT HOTEL
 - A. GRAND CANYON PLAZA RECEPTION
 - B. CEREMONY
 - C. LAKESIDE BUFFET
- III. OPENING OF THE POLYNESIAN VILLAGE HOTEL
 - A. COCKTAIL HOUR
 - B. POLYNESIAN LUAU
 - C. TORCHLIGHT CEREMONY
 - D. ELECTRICAL WATER PAGEANT
 - E. FANTASY IN THE SKY SPECTACULAR



SUNDAY - OCTOBER 24, 1971

THE GRAND CANYON PLAZA RECEPTION
and LAKESIDE BUFFET

At Twelve O'Clock Noon

Informal

Grand Canyon Plaza
and Lakeside Gardens
The Contemporary Resort Hotel

Reception on the occasion of
the Official Opening of The Contemporary Resort-Hotel
Ceremonies to be conducted by Bob Hope

THE POLYNESIAN LUAU

At Six O'Clock

Theme Attire

On the Lagoon
The Polynesian Village Hotel

An evening of unforgettable outdoor entertainment
on the beach and throughout the lagoon,
featuring a Polynesian Torchlight Ceremony,
Electrical Water Pageant and Fantasy In The Sky Spectacular,
staged on the occasion of
the Official Opening of the Polynesian Village Hotel

I. Private Reception

Papette Bay Verandah
Polynesian Village Hotel

10:30 A.M.

A private reception by invitation only, hosted by Mrs. John Truyens as an expression of appreciation for the participating guests in the Grand Opening Dedication Ceremony.

RECEPTION OFFERINGS

Polynesian Fizz

.....

French Crepes Flambe

.....

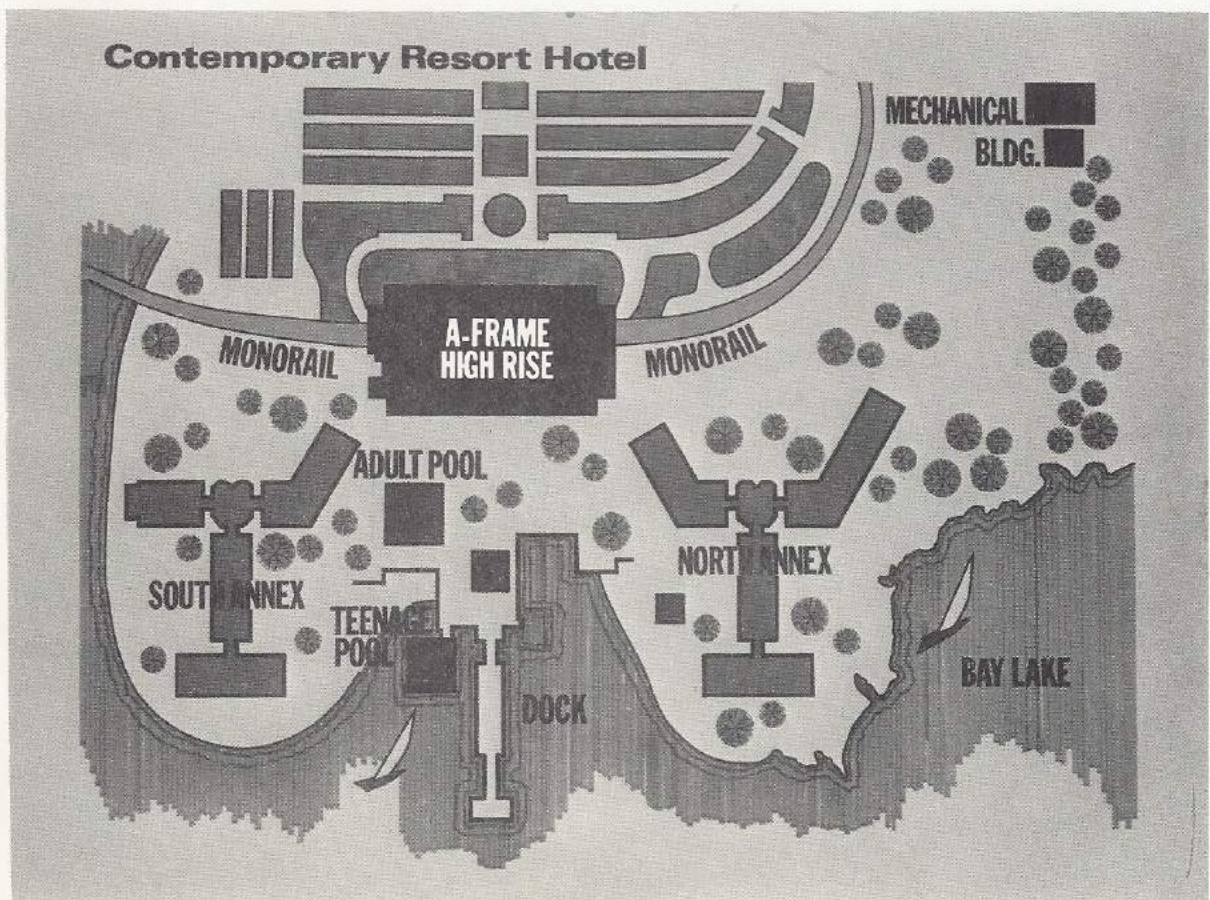
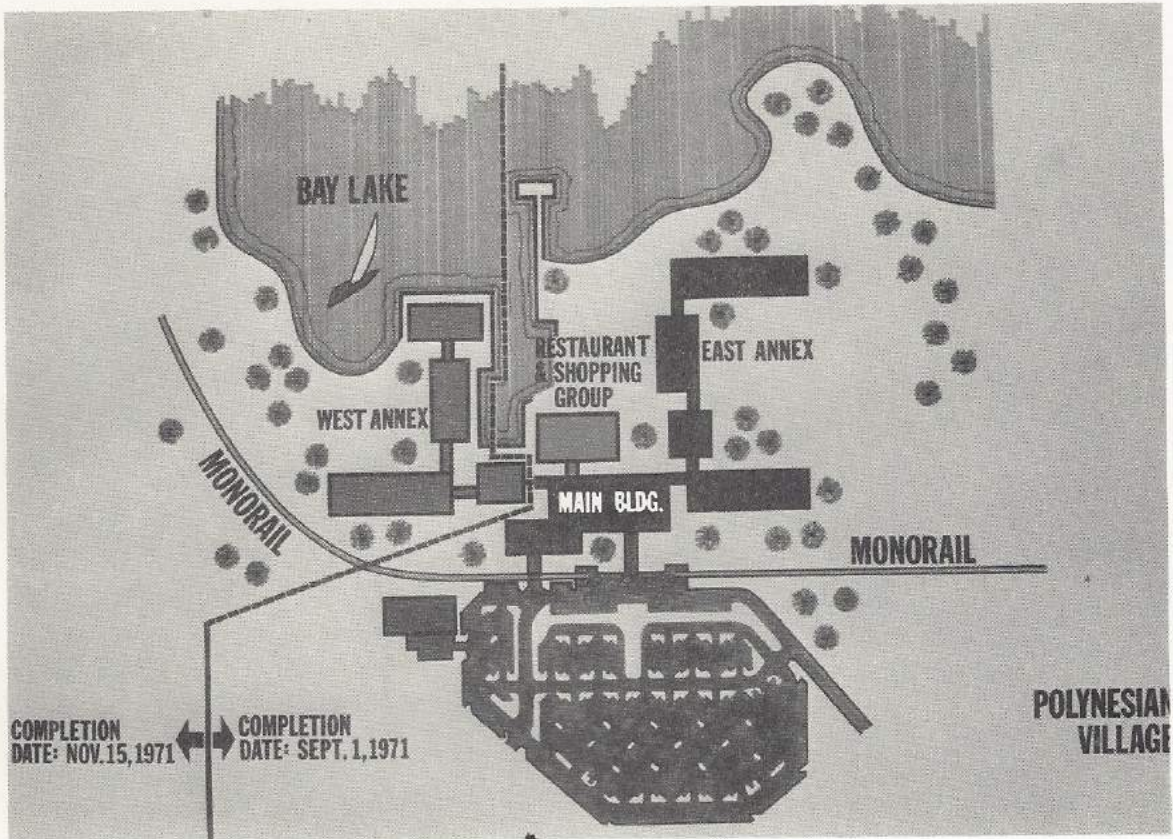
Cafe Demi Tasse

.....

Maui Ice Carving with Assorted Melon Balls - Decorated

Guests attending this Reception will be escorted to the Polynesian Village Hotel by their personal Host or Hostess.

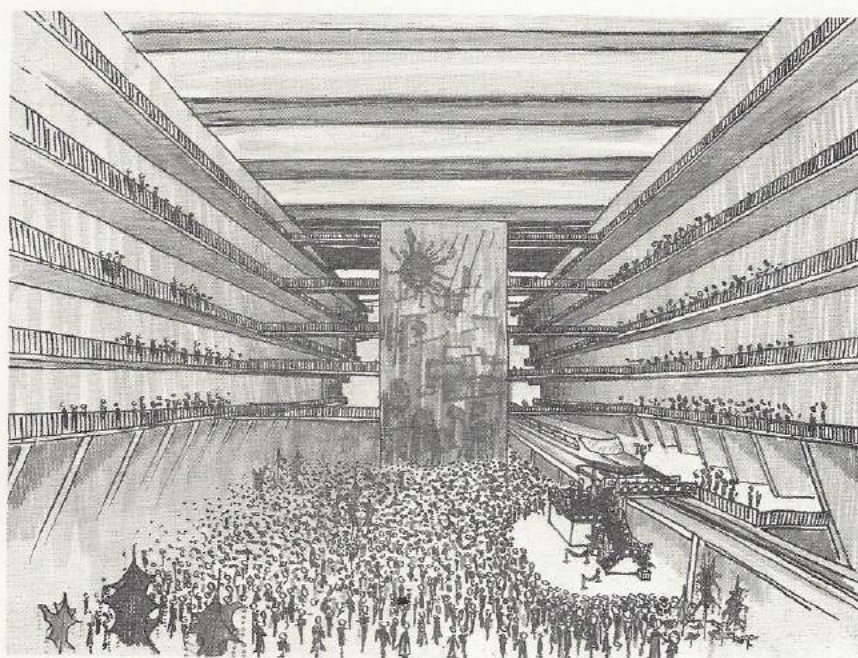
Following the private Reception all guests to leave from this event via monorail to the Grand Canyon Plaza Reception which follows. On exiting the monorail they will be met by their personal Host or Hostess who will escort them down the special staircase from the monorail landing to the Reception.



II. OPENING OF THE CONTEMPORARY RESORT HOTEL

A. Grand Canyon Plaza Reception

12:00 noon



Highlighting the occasion of the official opening of the Contemporary Resort Hotel.

B. CEREMONY

1. On arrival of monorail from Polynesian Village Hotel with participating guests aboard, individual hosts and hostesses to meet their assigned guests and escort them down the special staircase to the lobby level below.

Bob Hope to be escorted by two Walt Disney World tour guides down staircase to microphone on center stage platform.

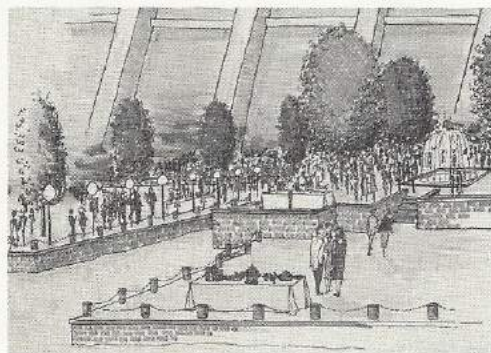


- | | |
|--|---------------|
| 2. Opening Introductions
and
Monolog Greeting | Bob Hope |
| 3. Introduction of selected
special guests | Bob Hope |
| 4. Introduction of Chairman of the
Board of United States Steel
Corporation, Edwin H. Gott | Bob Hope |
| 5. Remarks | Edwin H. Gott |
| 6. Acknowledgements
and
*
Invitation to all guests to
join in the lakeside buffet | Roy O. Disney |

C. LAKESIDE BUFFET

12:30 p.m.

Lakeside Gardens
The Contemporary Resort Hotel



Menu

AN AMERICAN FOOD FESTIVAL

Cocktails and stand-up buffet lunch to be served under canopies in the Lakeside Garden

Beverage Service

Hostesses to pass trays with a selection of:

Bloody Marys	Screwdrivers
Virgin Marys	Gin & Tonics
Great Canyon Coolers	

Three Main Bars and Two Auxiliary Bars set with:

All drinks which are passed

Food Service

Three Theme Areas plus Florida Desserts:

1. Theme Area: New England

- o Quahog Clam Shells Filled with Minced Clams in Newburg Sauce in Chafing Dish (fork)
- o Fried Bay Scallops in Chafing Dish - Tarter Sauce (frill pick)
- o Corn Bread Made in Iron Forms
- o Maine Lobster Salad on Toast Rounds

2. Theme Area: Golden West

- o Alaskan King Crab Salad on Sour Dough Slice
- o Sirloin of Colorado Beef Carved by Chefs - served on Party Rye
- o Salmon Showpiece surrounded by trays of Decorated Bite-Size Medallions of Salmon
- o Small Barbecued Lamb Pieces with Green Pepper, Onion, Pimentos (frill pick)
- o Assorted Cheeses Featuring Large Wheels of Cheese on Display
- o Quiche Lorraine Tartelethes in Chafing Dish
- o Chilled Rosé Wine in Large Casks
- o Assorted Fruits on Display

3. Theme Area: New Orleans

- o Boiled Gulf Shrimp Butterfried in Shell in Chafing Dish (small dish with napkin)
- o Decorated Snail Puffs - Chafing Dish
- o French Garlic Bread
- o Crepes Creole
- o Cafe Brulot

FLORIDA DESSERTSTO BE PASSEDON SILVER TRAYS

Tartelettes of Key Lime Pie

Ambrosia Petit Fours -

Orange and Cocoanut
Flavored with Kirschwasser

Entertainment to be provided by various atmosphere groups from the Magic Kingdom and hotels.

1. Los Gallos Mariachi Band
2. The Pearly Band
3. The Polka Band
4. The Adventureland Steel Band

2:00 p.m.

Cocktail service and bars to close.

2:30 p.m.

Buffet lines to close.

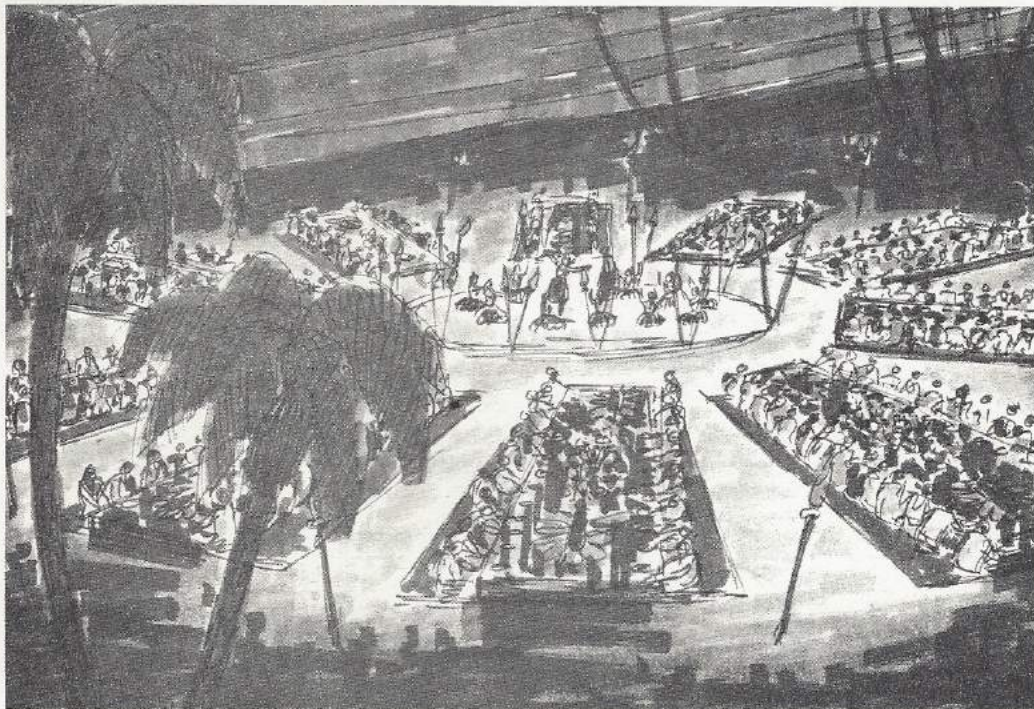
Live entertainment to end.

III. OPENING OF THE POLYNESIAN VILLAGE HOTEL

A. Cocktail Party

6:00 p.m.

Special cocktail party to precede dinner surrounding the patio and the swimming pool area.

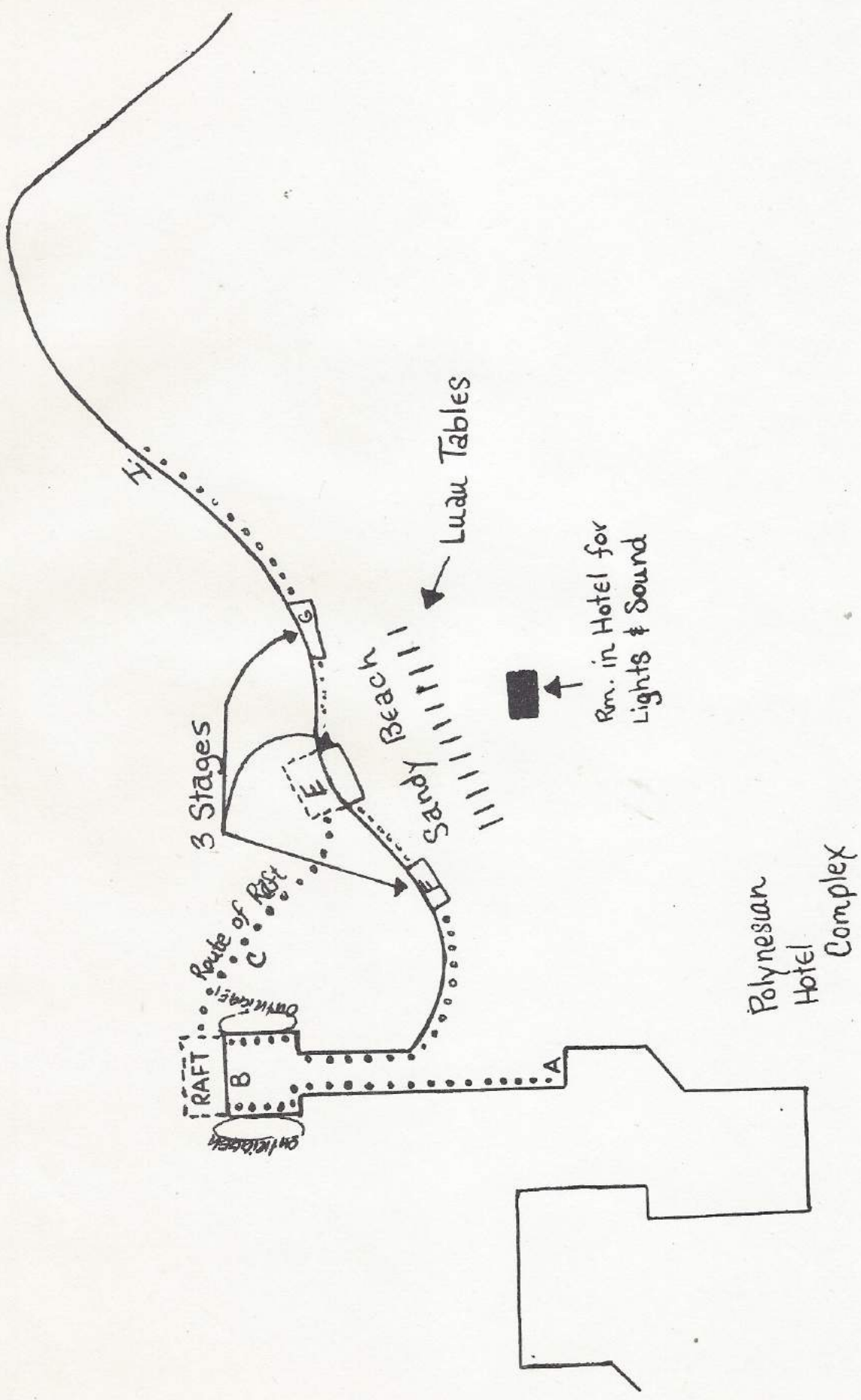


From the far reaches of the outer islands, all the peoples of Polynesia have been summoned by Kahuna and conch shell to the great sandy beach in front of the Hawaii longhouse for Luau celebration.

7:00 p.m.

Cocktail service to close in patio and swimming pool area.

Guests to be escorted to Luau tables on the beach at the sounding of the conch shell.



SOUND: CONCH SHELL FROM LUAU TABLE AREA

ANNOUNCER:

"LADIES AND GENTLEMEN... THE CONCH SHELL IS CALLING YOU
TO THE LUAU... SO BRING YOUR FAVORITE WAHINE OR KANE
AND COME TO THE LUAU... JUST FOLLOW THE PROCESSION...
THE FEAST IS READY TO BEGIN!"

Atmosphere music to begin in Luau area.

B. The Polynesian Luau

7:30 p.m.

Aloha Bowls - Mai Tai

.....

Spring Egg Roll - Fried Shrimp - Rumaki

.....

Hawaiian Poi - Hawaiian Salt
Opihi in Fresh Cocoanut

.....

Luau Pig
Chicken with Almonds
Lichee Duck Mandarin Style
Snow Peas and Waterchestnuts
Barbecued Pork Fried Rice

.....

Jasmine Tea

.....

C. The Torchlight Ceremony

8:30 p.m.

Conch Shell blows (Point A.) and Understated, almost "pre-show" Processional Chant starts out Pier. 2 runners are carrying torches and lighting the torches on the pier, as the group progresses. (This is the Tahitian basic group.) They are singing an ancient chant of going to the other islands (e-aa-semena ema wau serepe). Song finishes as soon as the group is seated on the raft and outriggers (Point B.)

Conch Shell blows and Tahitian drums and Tueres (wood blocks) begin fast Tahitian rhythm. At Point C. music stops and from Point A. The Hawaiian group answers. Offstage area mike should be used to augment sound.

ANNOUNCER:

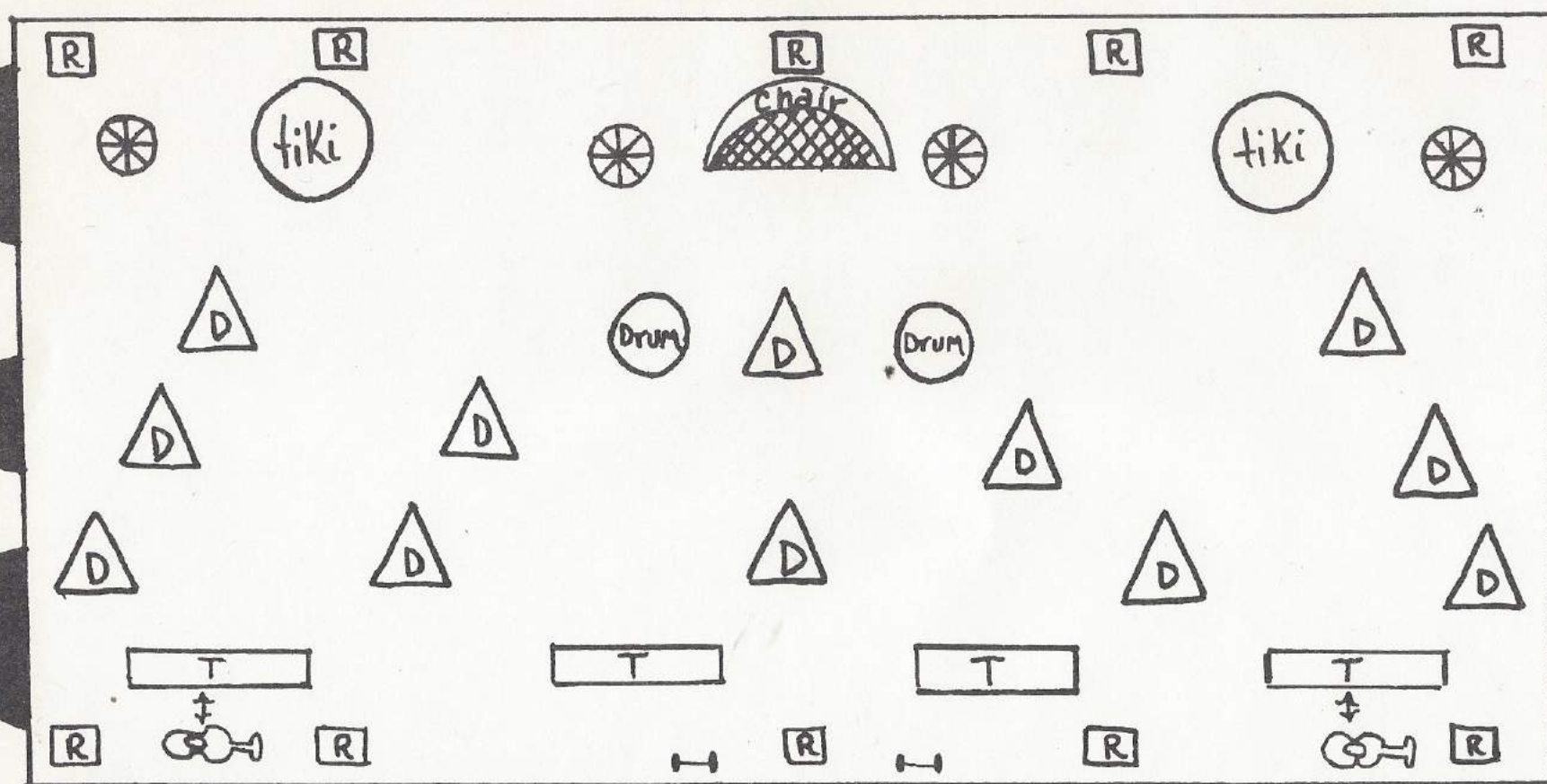
(AS RAFT IS APPROACHING BEACH)

"LADIES AND GENTLEMEN...ALOHA! - WALT DISNEY WORLD WELCOMES YOU TO THE POLYNESIAN LUAU AND TORCHLIGHT CEREMONY AS A GRAND DEDICATION AND OPENING OF THE FABULOUS, EXOTIC POLYNESIAN VILLAGE HOTEL. FROM THE ISLANDS OF TAHITI, A TIKI RAFT IS BRINGING A FEAST FOR YOUR EYES AND A SPECIAL SURPRISE."

Conch Shell blows again and Tahitian rhythm to point D. Stops, and from rise, Point I. Samoans answer with 16 bars . . . Again Conch Shell and Tahitian Rhythm through beaching of raft behind center stage to form backdrop and also stage for musicians.

(Note: The musical question and answer is an introduction as to what is to come . . . As if the different island groupings are calling to each other for the big Luau.)

Set up for "tiki Raft" (Pontoon Float Boat) for Polynesian Luau



10 - [R] = Rowers

4 - [torches] = torches

12 - [D] = dancers

4 - [T] = tueres (wood blocks)

↑
Tie ons for
Center Stage
↑

As the raft beaches against the center stage:

ANNOUNCER:

"AND LOOK WHO'S IN THE KING'S CHAIR....A VERY
IMPORTANT PERSON, INDEED! -- IT'S KING LION...
THE SENSATIONAL DISNEY CHARACTER FROM THE NEW
WALT DISNEY FEATURE, "BEDKNOBS AND BROOMSTICKS"
----- EORANA, KING LION! (PAUSE)
A ROYAL POLYNESIAN WELCOME TO ALL FROM KING
LION!"

As Tahitian girls kiss King Lion:

ANNOUNCER:

"AND IN TRUE POLYNESIAN FASHION, WE BID KING
LION A ROYAL WELCOME!"

On the introduction of King Lion he welcomes
and sends two runners out from stage center
to light all of the torches along the beach.
The Tahitian musicians proceed to just behind
the center stage and the other performers fan
out so that each of the three stages are filled
with Tahitians for the opening number.

ANNOUNCER:

"AND NOW, KING LION COMMANDS HIS RUNNERS TO...
LIGHT THE TORCHES.-- LET THE CELEBRATION BEGIN!"

FROM TAHITI

A very special "King arrives to bring exciting dances of OTEA, APARIMA, TOTO and BORA BORA.

ANNOUNCER:

OTEA DANCE INTRO

"TAHITIAN BEAUTIES IN A WELCOMING FORMATION CALL TO THE PEOPLE OF ALL ISLANDS TO JOIN OUR CELEBRATION AS THEY PERFORM THE AUTHENTIC OTEA."

Otea. . . (Women only) At end of dance, men shout and jump into sand which gives the girls time to drop outer skirt (they are underdressed for:

ANNOUNCER:

APARIMA DANCE INTRO

"AND NOW, THE HULA OF THE TAHITIANS. . . THE APARIMA, AS IT IS TAUGHT IN CHILDHOOD. MARCELLA WAHINI DESCRIBES THE PRETTY LADIES OF THE ISLANDS . . . HOE ANA TELLS OF THE MIGRATION FROM TAHITI TO HAWAII. . . AND TEMANU PUKARUA IS THE STORY OF A BEAUTIFUL NATIVE BIRD IN TAHITI."

Aparima - As dance ends, entering through audience are:

ANNOUNCER: TOTO DANCE INTRO

"THE TAHITIANS ARE ALWAYS DANCING. . . WHEN THEY'RE BABIES, YOUNGSTERS, GROWN-UPS AND..... GRANDPARENTS!

AND TO SHOW YOU HOW THEY STILL LIKE TO KICK UP THEIR HEELS AND SHAKE A SWINGIN' HIP, IT'S THE FAMOUS TOTO DANCE...

LOOK OUT FOR GRAMA!"

To To's - (Grandmother dancers 9) for audience participation, one couple on each stage, others take turns . . . While this is happening there is time for six of the 12 Tahitian girls to return to Otea costume for:

ANNOUNCER:

BORA-BORA DANCE INTRO

"AND NOW. . . AS CELEBRATED ON EACH BASTILLE DAY,
THE WELL-KNOWN CHALLENGE BETWEEN DRUMMERS AND
DANCERS FROM ALL ISLANDS. . .
IT'S THE EXCITING BORA-BORA!"

Bora Bora (Drum competition dance) singly, in
pairs, etc., into

ANNOUNCER:

FESTIVAL FINALE INTRO

"IT'S FUN TIME IN TAHITI. . . AS EVERYONE
DANCES!"

Festival Finale with all Tahitians to spread
throughout area (to get ready to greet
Hawaiian group). . . .

FROM HAWAII

Eight Holokus representing each island for
SONG OF THE ISLANDS, graceful dancers with
FOR YOU A LEI and LOVELY HULA HANDS, and the
bamboo stick dance, NANI WALE.

ANNOUNCER:

HOLOKU INTRO

"THE FUN-LOVING TAHITIANS NOW GREET EIGHT
BEAUTIFUL HAWAIIAN GIRLS DRESSED IN HOLOKUS,

AND WEARING THE COLOR AND FLOWER OF THE ISLAND
EACH GIRL REPRESENTS:

IN GLOWING YELLOW, THE ISLAND OF OAHU; BRIGHT
RED FOR HAWAII; A ROMANTIC PINK IS THE ISLAND
OF MAUI; KAUAI IN DEEP PURPLE; A BEAUTIFUL
GREEN FOR MOLOKAI; A GAY ORANGE IS THE ISLAND
OF LANAI; PURE WHITE REPRESENTS NIIHAU; AND
A PEARLY GREY FOR THE ISLAND OF KAHOOLAWE."

8 Holuku dancers enter through tables each
wearing a different color, representing the
different Hawaiian islands (Tahitians have
waved "Hello" and formed living, swaying
curtain, as vocalist is singing "Song of the
Islands" which segues into:

ANNOUNCER:

FOR YOU A LEI - INTRO

"IN TRUE HAWAIIAN FASHION, PRETTY HAWAIIAN
GIRLS NOW SYMBOLIZE THE ROMANCE OF THE ISLANDS
BY SHARING THE BEAUTY OF HAWAII WITH THE
TRADITIONAL LEI, THE TOKEN OF LOVE."

"For You A Lei" as 12 girls enter through
audience distributing leis and working their
way towards stage. The 12 go into:

ANNOUNCER:

LOVELY HULA HANDS - INTRO

"OUR HAWAIIAN DANCERS NOW WITH THE TRADITIONAL
ISLAND FAVORITE, 'LOVELY HULA HANDS'."

GIVING THANKS. . . AND ALWAYS SINGING AND DANCING. IT'S A HAPPY AND FUN DANCE."

After nine Samoan girls (with clack clacks) dance, the occurrence of several shouts and screams bring on three knife dancers jumping onto stage. (One knife dancer per stage)

ANNOUNCER:

SAMOAN KNIFE DANCE - INTRO

"AND NOW A DANCE OF KEEN COMPETITION WHICH HAS BECOME THE TRADITIONAL DANCE OF SAMOA. . . THE SAMOAN KNIFE DANCE!"

FROM NEW ZEALAND

Traditional NAWAKA migration dance and spectacular PAMAI POI-BALL DANCE.

From back through audience to stage enter nine Mauri girls dancing Nawaka the rowing dance of leaving the Island after the great flood - to stage for Pamai Poi-Ball Dance

ANNOUNCER:

PAMAI POI-BALL DANCE - INTRO

"FROM NEW ZEALAND, MAURI GIRLS NOW PERFORM THE TRADITIONAL NAWAKA DANCE OF THE MIGRATION THROUGHOUT THE PACIFIC BY THE SYMBOLIC SEVEN CANOES TO NEW ZEALAND AFTER THE GREAT FLOOD AS THEY PREPARE FOR THEIR SPECTACULAR PAMAI POI-BALL DANCE."

They begin using poi balls at this point - blackout - black lights - pick up the poi balls for a spectacular effect. Also flowers and leis should all be luminously painted for black light effect to be fully effective.

FROM ALL OF POLYNESIAN

The Thrilling FIRE KNIFE DANCE to introduce
our own dessert surprise.

A couple of loud yells - lights out on outer
stages - all attention on center stage as one
fire dancer jumps up and performs the fire dance.

ANNOUNCER:

POLYNESIAN FIRE DANCE - INTRO

"AND NOW, AS A SACRED RITUAL TO THE FIRE GODS. .
THE POLYNESIAN FIRE DANCE."

By this time, audience is used to looking
back for entrances - as they look back after
fire dance, in come 8 Koloku dancers entering
through audience followed by carried trays of
Goddess Pele Flaming Diamond Head Pineapple
Dessert - which is in turn followed by Hano-
Hano dancers with brightly feathered gourds.
As dessert is served, the entire cast joins
the Hano-Hano in a war chant dance for the
grand finale. Entire cast leaves through
audience with rhythm sounds and movements. As
they fade out, Electrical Pageant begins.

ANNOUNCER:

GODDESS PELE FLAMING DIAMOND HEAD PINEAPPLE
DESSERT - INTRO

"LADIES AND GENTLEMEN, IN HONOR OF GODDESS PELE
. . . YOUR FLAMING DIAMOND HEAD PINEAPPLE DESSERT!"

9:00 p.m.

.
Goddess Pele Flaming Diamond Head Pineapple
.

D. Electrical Water Pageant

On The Lagoon
 THE ELECTRICAL WATER PAGEANT
 An Imaginary Delight of Fanciful Creatures
 and Serpents of the Deep on Parade

9:05 p.m.

Duration 10 minutes

Goodyear blimp will be used overhead programmed
 in animated lights in conjunction with the regular
 electrical pageant.

ANNOUNCER:

"AS WE BID RAREWELL TO OUR FRIENDS FROM
 THE ISLANDS WHO SO COLORFULLY ENTERTAINED
 US IN CELEBRATION OF THE GRAND OPENING OF
 THE POLYNESIAN VILLAGE HOTEL, WE DIRECT YOUR
 ATTENTION NOW TO THE SEVEN SEAS LAGOON . . .
 AND WALT DISNEY WORLD'S EXCITING ELECTRICAL
WATER PAGEANT - AN IMAGINARY DELIGHT OF FANCI-
 FUL CREATURES AND SERPENTS OF THE DEEP. . .
 ON PARADE."

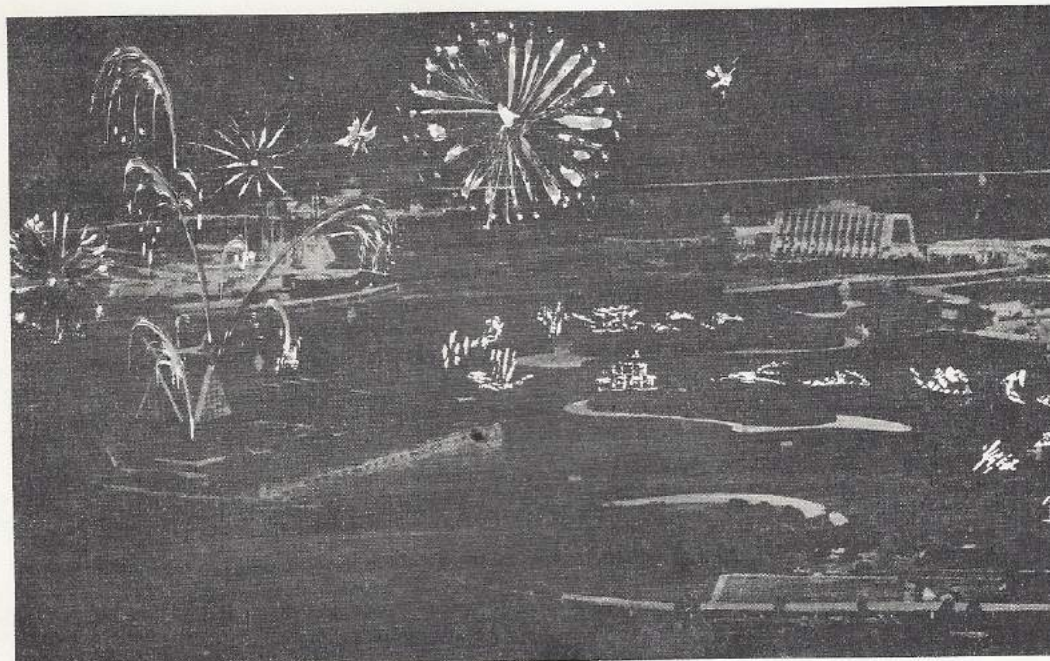
Units 1-3:	THE SEA SERPENT
Unit 4:	THE SPOUTING WHALE
Unit 5:	THE SEA LIONS
Unit 6:	THE BIRTH OF VENUS
Unit 7:	THE MERMAIDS
Unit 8-10:	THE DIVING PORPOISE
Unit 11:	THE OCTOPUS
Unit 12:	THE FLYING FISH
Unit 13:	THE SEA HORSES
Unit 14-15:	KING NEPTUNE'S LAUNCH

On cue - each of the 14 electrical pageant
 units to explode in a magical pyrotechnic
 display, simultaneously with the lights all
 blacking out. This to be immediately follow-
 ed with the beginning of the aerial fireworks
 display.

E. Fantasy In The Sky Spectacular

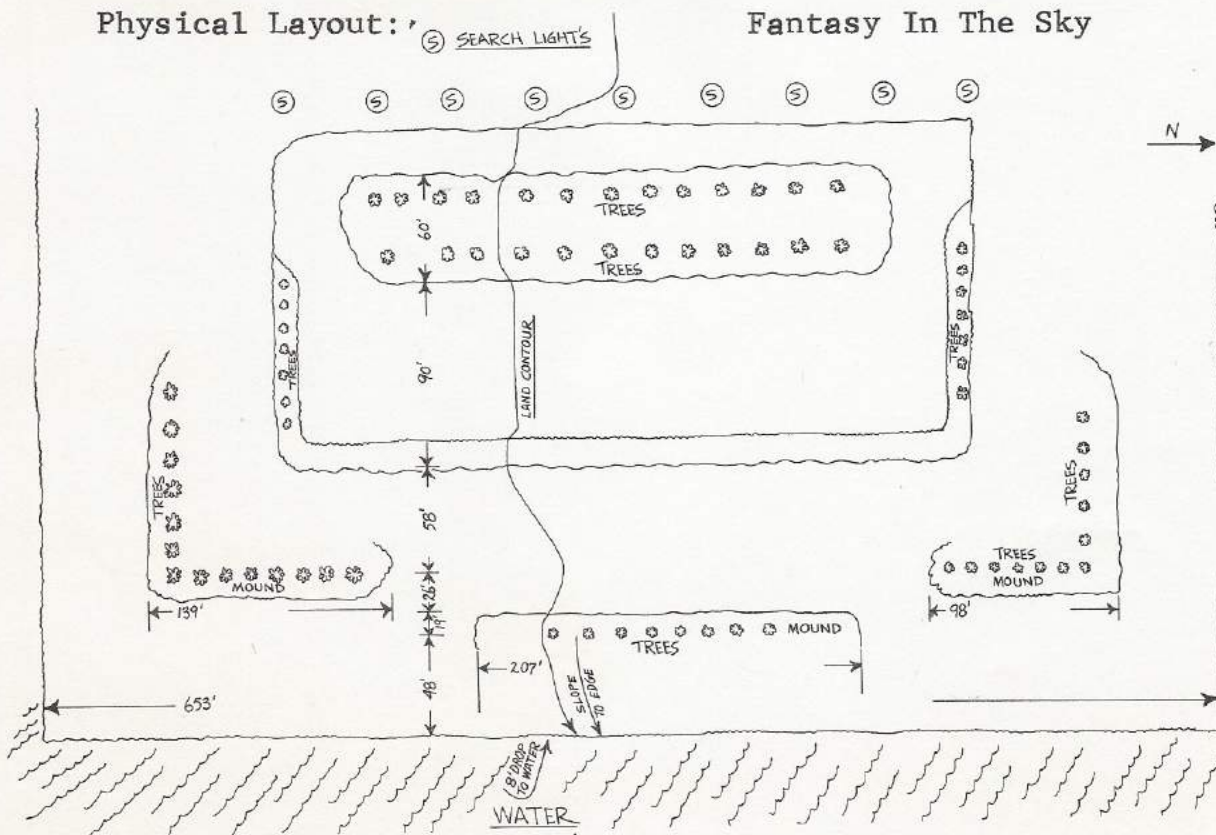
In The Heavens

THE FANTASY IN THE SKY SPECTACULAR
An Aerial Flight of Lights and Glimmering
Pyrotechnics in a closing Grand Feu de Joie



Physical Layout: (S) SEARCH LIGHTS

Fantasy In The Sky



9:15 p.m.

Duration: Five minutes

ANNOUNCER:

"LADIES AND GENTLEMEN, BOYS AND GIRLS. . .
WHEREVER YOU MAY BE AT THIS MOMENT, WE
INVITE YOU TO LOOK TO THE SKY IN THE CENTER
OF THE MAGIC KINGDOM AS THE WALT DISNEY
WORLD BAND ANNOUNCES A SPECIAL PERFORMANCE
OF OUR NIGHTLY 'SKY SPECTACULAR'!"

Special fanfare and musical opening featuring famous Disney melodies. The "Fantasy in the Sky" production is accompanied by a specially prepared production tape and nine rotating searchlights throughout the entire production.

MUSIC: MUSIC UP TO DRUM ROLL AND FADE TO BG

ANNOUNCER:

"TONIGHT. . . WALT DISNEY WORLD PRESENTS A
DAZZLING DISPLAY OF SPECTACULAR SIGHTS. . .
SETTING THE SKY A GLOW WITH AN ARRAY OF
FLASHING FANTASIES, IMPORTED FROM THE FAR-OFF
CORNERS OF THE WORLD. FOR YOUR ENJOYMENT. . .
THIS IS WALT DISNEY WORLD'S 'FANTASY IN THE
SKY'!"

The first section of "Fantasy in the Sky" features a continuous flight of large caliber shells soaring high into the Heavens and covering the Skies with an aerial canopy of glittering molten jewels and torrents of illuminated spray concluding with a colorama finale.



MUSIC: DISNEY MEDLEY UP-SEGUE TO "YANKEE DOODLE" :01
AND FADE TO BG

The second section to be fired simultaneously with rapid flight of whistle and star shells to coincide with the drum and fife music of Yankee Doodle.

ANNOUNCER:

"LADIES AND GENTLEMEN. . . WALT DISNEY
WORLD SALUTES. . . AMERICA THE BEAUTIFUL!"

The third section features a display of red, white, and blue aerial effects and aerial salutes bursting at a high altitude and covering the Skies with an aerial canopy of glittering jewels and during the rendering of "THE STARS AND STRIPES FOREVER".

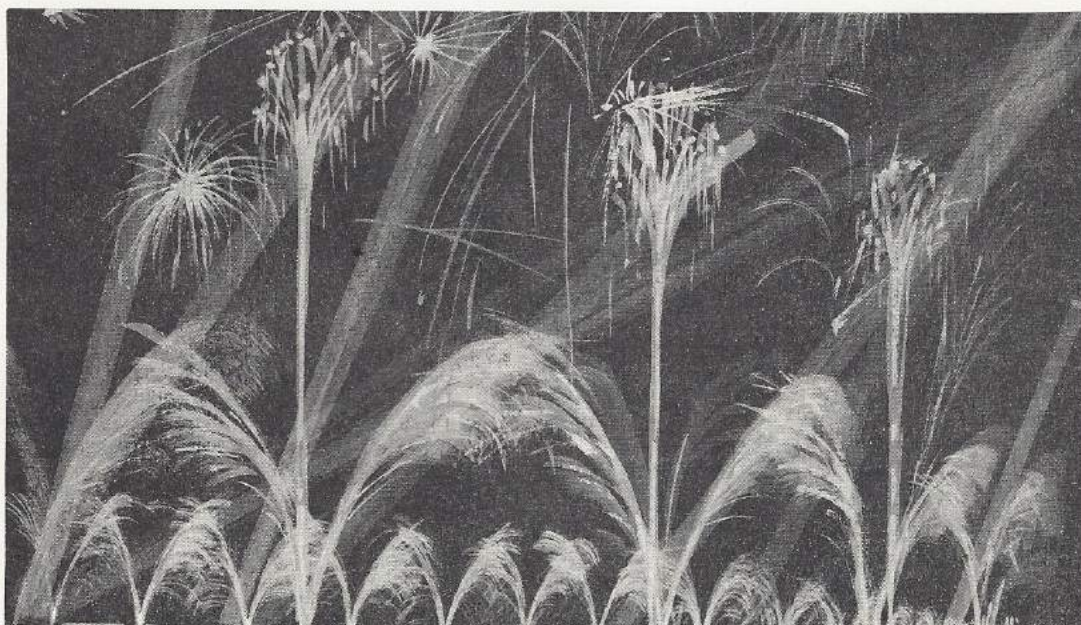
MUSIC: "STARS & STRIPES FOREVER" UP TO TIMPANI ROLL &
FADE TO BG

ANNOUNCER:

"AND NOW. . . THE WALT DISNEY WORLD SUPER
SPECTACULAR!"

MUSIC: CLOSING FANFARE

The fourth section presents the Grand Feu De Joie of our National colors consisting of a magnificent flight of various calibre shells and mine bags, bursting at various heights and filling the heavens with our National colors and concluding with aerial salutes to close the fireworks extravaganza.



and Grand Mosaic Device produced on an elaborate scale across the entire water front. 30 Huge Silver Jets discharging mammoth fountains of shimmering Silver Fire, spaced and arranged on upright standards to produce an enchating lattice effect by its brillancy and water reflection.

supported by - Clusters of shimmer light roman candles emitting mammoth fountains of shimmering electric snowflakes. The whole forming a most imposing spectacle.

followed by - Batteries of grand prix roman candles emitting towering jets of shimmering silver and golden fire, studded with red, white and blue fire crystals.

concluding with - Grand flight of aerial shells soaring skyward and bursting high in the Heavens into aerial acres of shimmering red, white, and blue jewels and torrents of molten spray. A Magnificent flight of large rockets soaring skywards and bursting in the Heavens with magnificent effect, displaying our National colors. Flight of powerful aerial maroons bursting in the Heavens with deafening reports to announce the termination of the Display.

ANNOUNCER:

"LADIES AND GENTLEMEN, BOYS AND GIRLS. . . WE
HOPE YOU ENJOYED 'FANTASY IN THE SKY'."

9:20 p.m.

At the conclusion of Fantasy In The Sky, all of the participants in the Torchlight Ceremony and service personnel from the Luau will form a human tunnel of glittering sparklers from the Luau beach to the lobby of the Polynesian Village Hotel through which all of the guests will pass upon leaving the Luau.

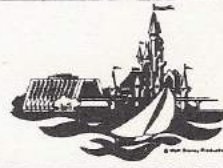


C.

DAY THREE

THE GRAND OPENING DEDICATION CEREMONY
AND MAIN STREET PARADE

- I. GUEST SEATING
- II. STAGING AREA
- III. OVERTURE
- IV. WESTMINSTER CARILLON AND FANFARE
- V. DEDICATION CEREMONY
- VI. NATIONAL ANTHEM
- VII. OFFICIAL WELCOME
- VIII. OLD FASHIONED MAIN STREET PRODUCTION NUMBER
- IX. GRAND PARADE
- X. 1,076 PIECE CEREMONIAL MARCHING BAND
- XI. CLOSING SEGMENT
- XII. GRAND FINALE



MONDAY - OCTOBER 25, 1971

THE GRAND OPENING DEDICATION CEREMONY
and MAIN STREET PARADE

At Two O'Clock

*

Informal

Town Square and Main Street U.S.A.
The Magic Kingdom

Heralding the Official Opening of WALT DISNEY WORLD
As an International Destination Resort and Vacationland

Featuring

WALT DISNEY WORLD ON PARADE

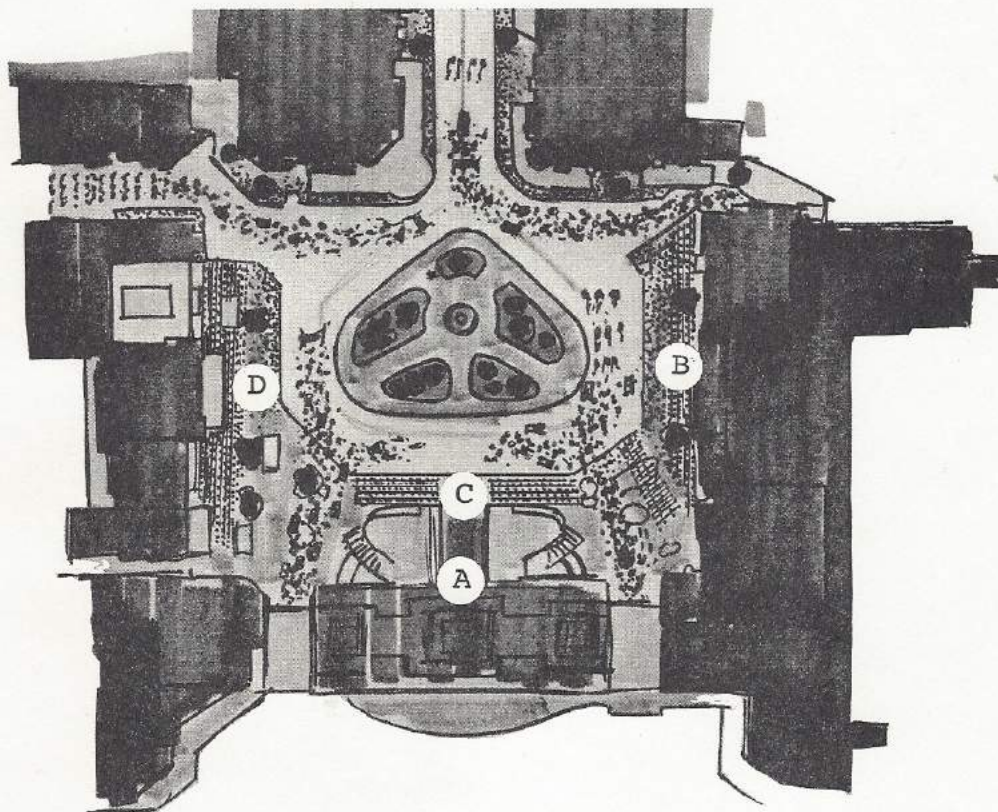
Climaxing with the grand entry of the
1076-piece Ceremonial Marching Band
Under the Baton of
Music Man MEREDITH WILLSON

I. GUEST SEATING

Reserved seating by ticket stub to be allocated into the following sections:

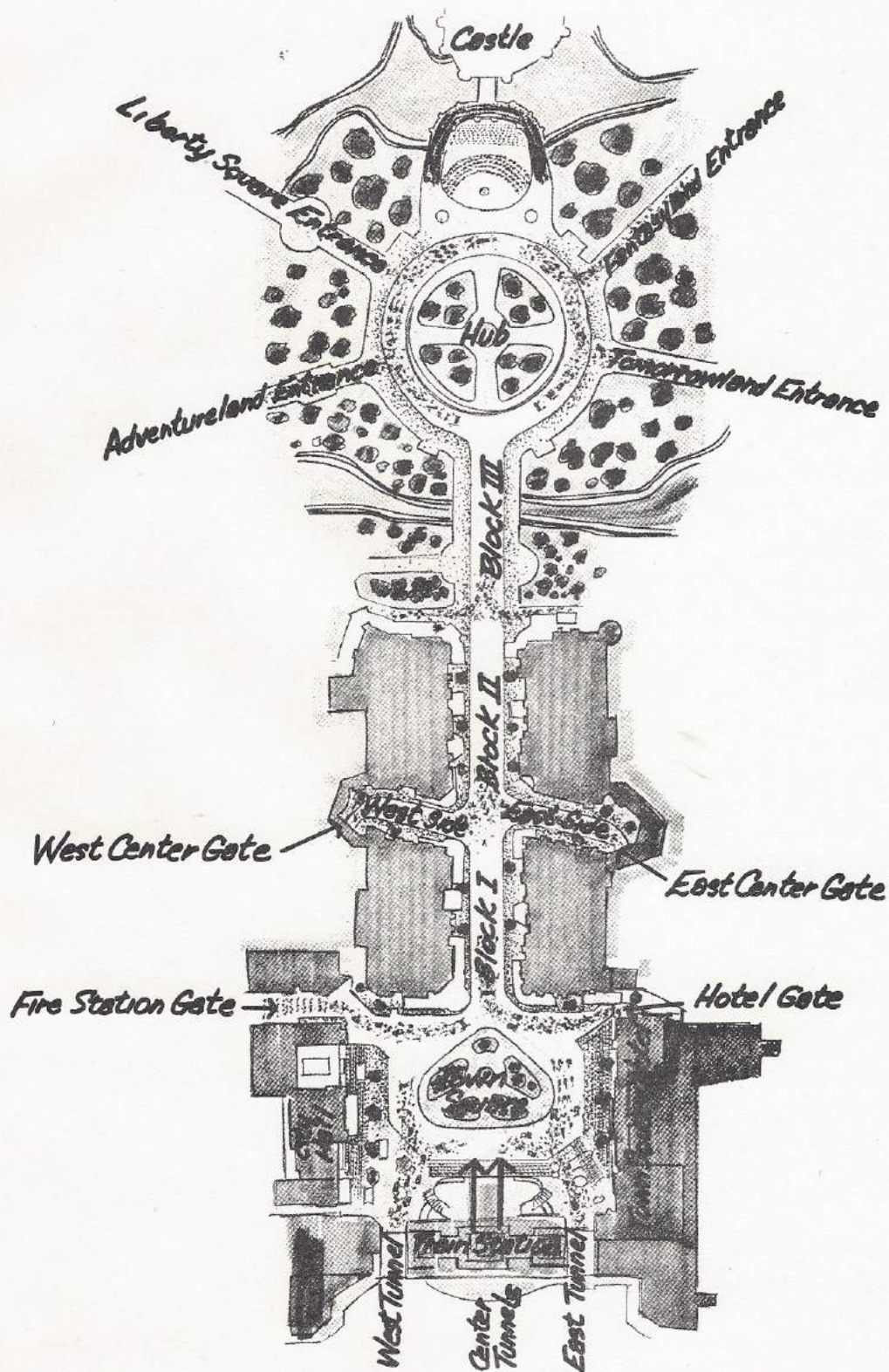
- SECTION 'A' - Top of The Train Station
- SECTION 'B' - Front of Hotel
- SECTION 'C' - Center Tunnel below Train Station
- SECTION 'D' - Front of City Hall

See following Town Square layout for seating locations:



1:30 p.m.

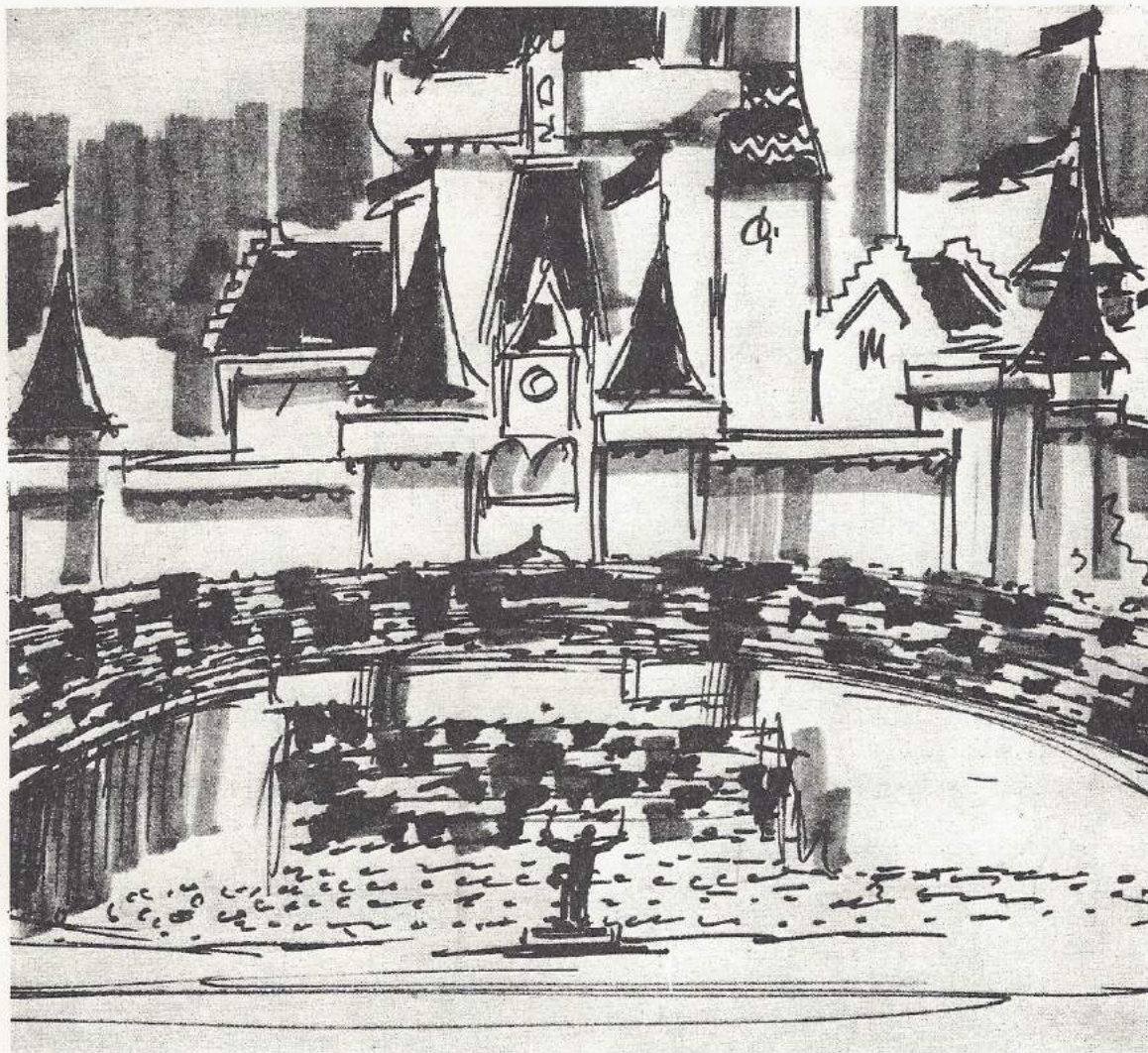
All participants in Grand Opening
Dedication Ceremony and Main Street
Parade in STAND-BY POSITION.

II. MAIN STREET STAGING AREA

III. OVERTURE

1:35 p.m.

The Castle Forecourt



PARTICIPANTS:

1100 Voice Chorus on the Castle Ramp from the
High Schools and Colleges of Central Florida

wearing their own short-sleeve white
shirts and blouses with open collars,
and dark slacks and skirts.

400 Voice Chorus on the Castle Forecourt Stage
from Colleges and Community Choirs in
Central Florida

wearing their own short-sleeve white shirts and blouses with dark skirts and slacks. Men to wear Main Street blazers with ties.

100 Piece UNIVERSITY OF FLORIDA Symphonic Band
under the direction of Richard W. Bowles

wearing their own blue blazers.

GUEST CONDUCTOR:

Dr. Charles C. Hirt
from
The University of Southern California

MUSIC:

1. "WALT DISNEY SHOWCASE" Instrumental
A medley of Disney songs arranged for symphonic band by James Christensen.
2. "IT'S A SMALL WORLD" Choral Selection
By Richard M. Sherman & Robert B. Sherman
Arranged by Don Muller

1:45 p.m. DOCUMENTATION OF GRAND OPENING CEREMONIES

ANNOUNCER:

"LADIES AND GENTLEMEN, BOYS AND GIRLS . . .
WE WELCOME YOU TO THE OFFICIAL GRAND OPENING
DEDICATION CEREMONY OF THE INTERNATIONAL
DESTINATION RESORT AND VACATIONLAND - WALT
DISNEY WORLD.

THIS EVENT MARKS THE REALIZATION OF A DREAM
CHERISHED BY WALTER ELIAS DISNEY. TODAY, IN
HIS GRAND TRADITION, WE'LL SEE A MAGIC

KINGDOM COME TO LIFE AS WE TAKE PART IN THIS HISTORIC GRAND OPENING.

THE PROCEEDINGS WILL BE FILMED TODAY FOR A TELEVISION SPECIAL SO THAT WE MAY CAPTURE FOREVER THE SPECTACULAR CEREMONY WHICH IS ABOUT TO UNFOLD. IN ORDER THAT YOU MAY BETTER ENJOY THE FESTIVITIES WE'LL GIVE YOU A BRIEF DESCRIPTION OF THE ORDER OF EVENTS.

THE ENTIRE AREA OF MAIN STREET USA FROM TOWN SQUARE TO CINDERELLA'S CASTLE WILL BECOME OUR DEDICATION STAGE. MUSIC WILL FILL THE AIR AND AT TWO O'CLOCK THE CHIMING OF THE WALT DISNEY WORLD CARILLON WILL ANNOUNCE THE OPENING FANFARE.

WE'LL HEAR THE HERALD TRUMPETERS OF THE UNITED STATES ARMY BAND AS WE SEE THE ONE CLOSEST TO WALT DISNEY WHO SHARED HIS NAME AND HIS DREAM, ACCOMPANY WALT'S BROTHER, ROY DISNEY, TO READ THE INSCRIPTION ON THE DEDICATION PLAQUE.

THE AMERICAN FLAG WHICH WILL BE RAISED OVER TOWN SQUARE FOR THE FIRST TIME CARRIES SPECIAL SIGNIFICANCE AS THIS FLAG WAS ONCE FLOWN OVER THE WHITE HOUSE IN WASHINGTON AND

IS THE OFFICIAL GIFT FROM THE PRESIDENT OF THE UNITED STATES FOR THIS OCCASION. TOWARD THE END OF OUR NATIONAL ANTHEM, MORE THAN 500 WHITE PIGEONS WILL FLY OVER TOWN SQUARE AND UP MAIN STREET USA AS A SYMBOL OF HOPE FOR WORLD PEACE.

YOUR OFFICIAL WELCOME AND ACKNOWLEDGEMENT TO THOSE WHO MADE WALT DISNEY WORLD POSSIBLE WILL BE EXTENDED BY THE PRESIDENT OF WALT DISNEY PRODUCTIONS, DONN TATUM. THEN, ALL OF MAIN STREET USA WILL COME TO LIFE IN A NOSTALGIC SETTING OF THE TURN OF THE CENTURY FOR A SPECTACULAR MUSICAL PRODUCTION, ENHANCED BY COLORFUL COSTUMES AND AUTHENTIC MEMORABILIA, REFLECTING AMERICA AS IT WAS IN THE YEARS FROM 1890 TO 1910.

AND THEN...MORE THAN 5,000 PERFORMERS PRESENT WALT DISNEY WORLD ON PARADE... A SPECTACULAR PAGEANTRY OF MARCHING BANDS, ALL OF THE FAMOUS WALT DISNEY CHARACTERS LEAD BY MICKEY MOUSE HIMSELF PLAYING THE WORLD'S LARGEST BASS DRUM, THE WALT DISNEY WORLD THEME FLOAT AND REPRESENTATIVES FROM ALL CORNERS OF THE MAGIC KINGDOM: TOMORROWLAND, FANTASYLAND, ADVENTURELAND, SMALL WORLD AND FRONTIERLAND.

LEADING THE LIBERTY SQUARE PORTION OF THE PARADE, THE FLAG OF THE THIRTEEN ORIGINAL AMERICAN COLONIES WILL BE FOLLOWED BY THE COLORFUL LIBERTY SQUARE FIFE AND DRUM CORPS ...AND...IN TRIBUTE TO OUR COUNTRY, THE FLAGS OF ALL FIFTY UNITED STATES WILL BE CARRIED BY THE RECRUIT TRAINING COMMAND 50-STATE FLAG TEAM FROM THE NAVAL TRAINING CENTER - ORLANDO, FLORIDA.

WALT DISNEY WORLD ON PARADE WILL BE CLIMAXED WITH THE ENTRY OF THE ONE-THOUSAND-SEVENTY-SIX PIECE CEREMONIAL MARCHING BAND UNDER THE DIRECTION OF "MUSIC MAN" MEREDITH WILLSON.

THE PEAL OF JUBILANT CARILLON BELLS WILL BE HEARD THROUGHOUT THE MAGIC KINGDOM AS THE DEDICATION COMES TO A CLOSE WITH ALL UNITS PARTICIPATING IN THE GRAND FINALE.

TODAY, AS WE PAY TRIBUTE TO A MAN WHOSE DREAM HAS CREATED SO MUCH HAPPINESS THROUGHOUT THE WORLD, WE ALSO SALUTE THOSE WHO BELIEVED ENOUGH IN THAT DREAM TO HELP MAKE IT A REALITY."

1:50 p.m.

MUSIC:

3. "MARY POPPINS MEDLEY" Instrumental/Choral

By Richard M. Sherman & Robert B. Sherman
Band arrangement by James Christensen.

with choral inserts of:

"A SPOONFUL OF SUGAR"
Arranged by John Brimhall

and

"CHIM CHIM CHER-EE"
Arranged by John Brimhall

At the start of this number:

The U.S. Army Herald Trumpets to move
into position on the upper balcony of
the Hotel.

Walt Disney World Band to move to
position in center of Town Square
standing at attention waiting beginning
of Dedication Ceremony.

IV. 2:00 p.m. WESTMINSTER CARILLON

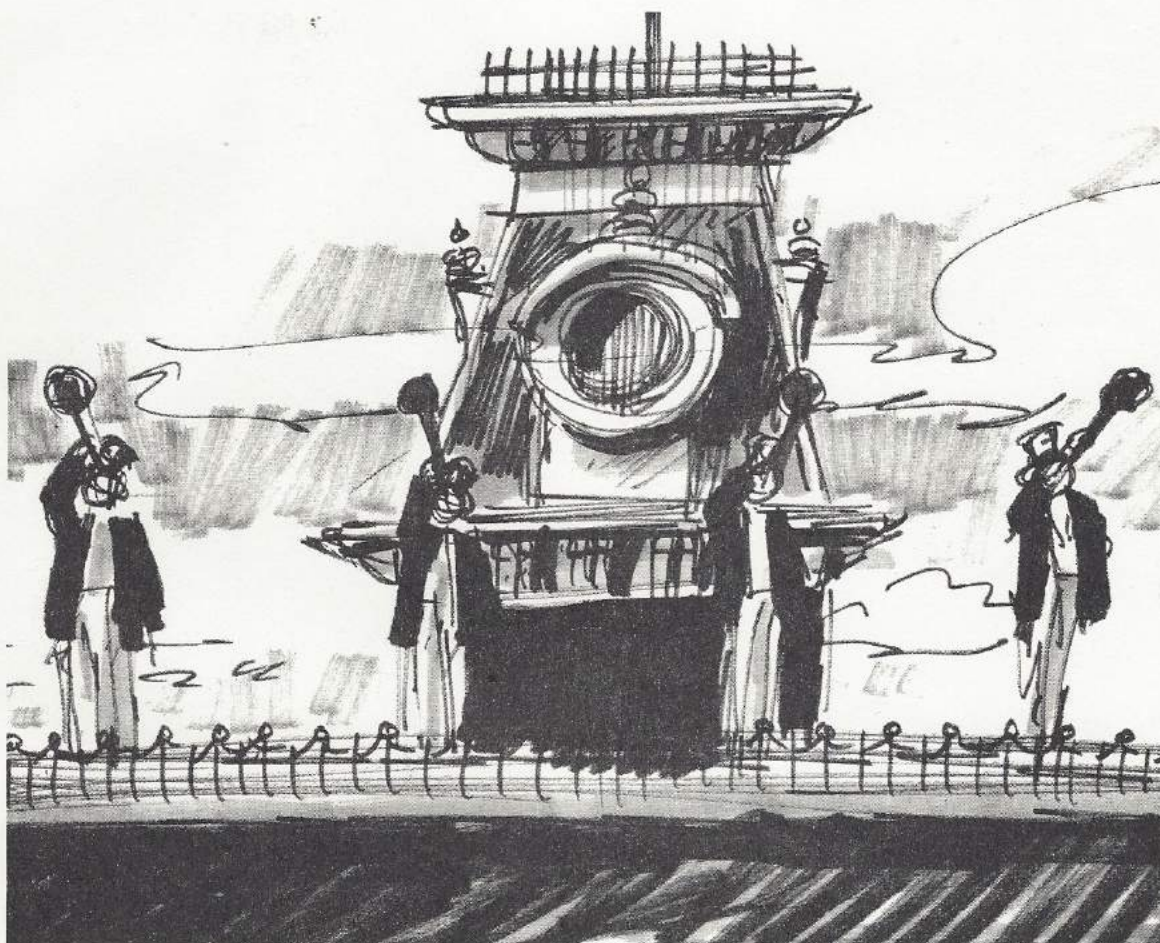
A. Westminster Peal

B. Chiming of hour of 2 o'clock

2:01 p.m. OPENING FANFARE - "JUBILANT"

The Herald Trumpets and Drums of the
United States Army Band/Washington, D.C.
Col. Samuel Loboda
U.S.A. Commanding Officer/Director

Performing across the upper balcony of
the Main Street HOTEL building.



During the fanfare, Mickey Mouse #1, Mrs. John Truyens, and Roy O. Disney enter from west center tunnel to position in center of Town Square.

Color Guard to move to position with U.S. Flag from east center tunnel.

V. 2:02 p.m. DEDICATION CEREMONY

ANNOUNCER:

NARRATION: INTRODUCTION OF DEDICATION CEREMONY

"LADIES AND GENTLEMEN... WE NOW DIRECT YOUR
ATTENTION TO TOWN SQUARE FOR THE OFFICIAL DED-
ICATION OF WALT DISNEY WORLD...WHERE ROY DISNEY,
CHARIMAN OF THE BOARD OF WALT DISNEY PRODUCTIONS,
WILL READ THE INSCRIPTION HE HAS WRITTEN EXPRESS-
LY FOR THIS MOMENT AND THIS OCCASION."

2:02:30 p.m. READING OF PLAQUE: ROY O. DISNEY

Plaque to be read from center of
Town Square from stand microphone

WALT DISNEY WORLD

is a tribute to the philosophy and life of
Walter Elias Disney

... and to the talents, the dedication, and the loyalty
of the entire Disney organization that made Walt Disney's
dream come true. May Walt Disney World bring Joy and
Inspiration and New Knowledge to all who come to this
happy place...A Magic Kingdom where the young at heart
of all ages can laugh and play and learn - together.

Dedicated this 25th Day of October, 1971.

Roy O. Disney
(signature)

VI. 2:04 p.m. NATIONAL ANTHEM

ANNOUNCER:

NARRATION: INTRODUCTION OF THE STAR SPANGLED
BANNER

"LADIES AND GENTLEMEN...OUR NATIONAL ANTHEM."

MUSIC:

"THE STAR SPANGLED BANNER"

1. Drum Roll

The Herald Trumpets and Drums of the
United States Army Band/Washington D.C.
Col. Samuel Loboda
U.S.A. Commanding Officer/Director

2. Beginning to the bridge

The Herald Trumpets and Drums

3. Beginning at the bridge

The Herald Trumpets and Drums
The Walt Disney World Band
James Christensen, directing

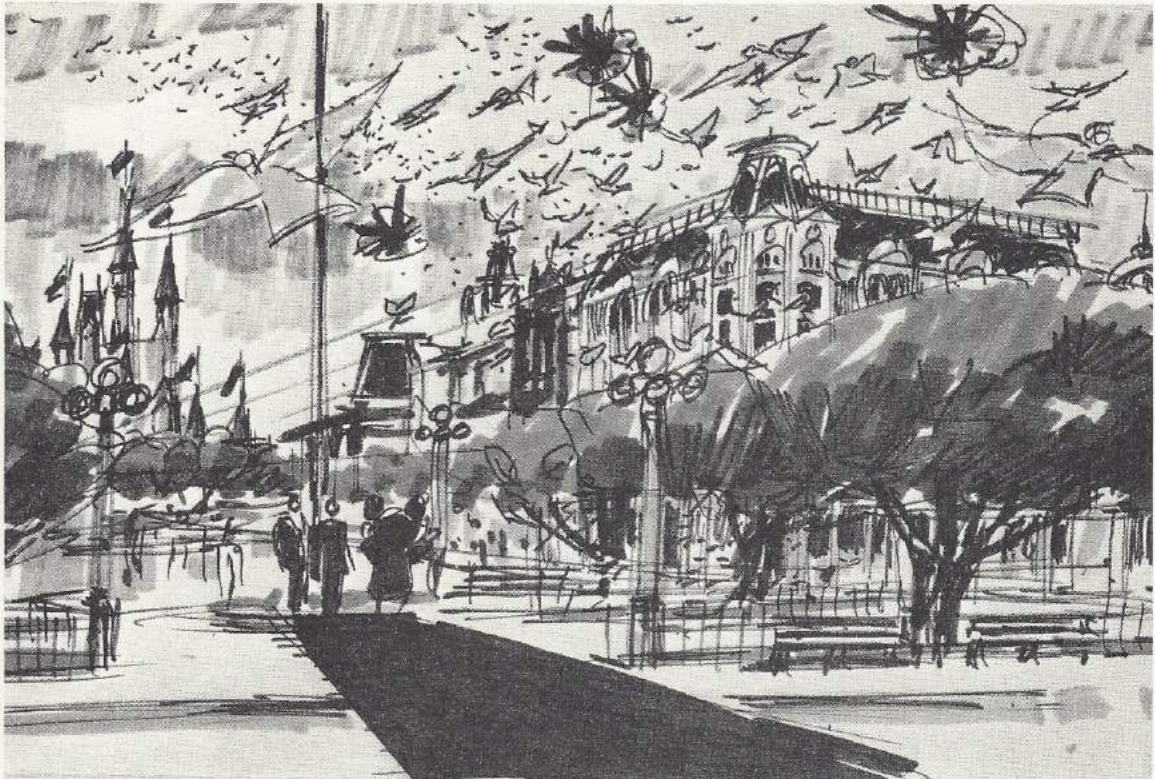
4. The last 8 bars

The 1076 piece Ceremonial Band

Col. Samuel Loboda, directing
(from the roof of the Train Station)

On the last 8 bars, 500 white doves
of peace with red, white and blue
ribbons attached, to be released
from pigeon carts located on the
lagoon side of the train station.

Birds to fly up Main Street.



On the conclusion of the National Anthem, participants in Town Square to exit to the center tunnels in the following order:

1. Roy O. Disney
escorting
Mrs. John Truyens
2. Mickey Mouse
3. The Walt Disney World Band
4. The Color Guard

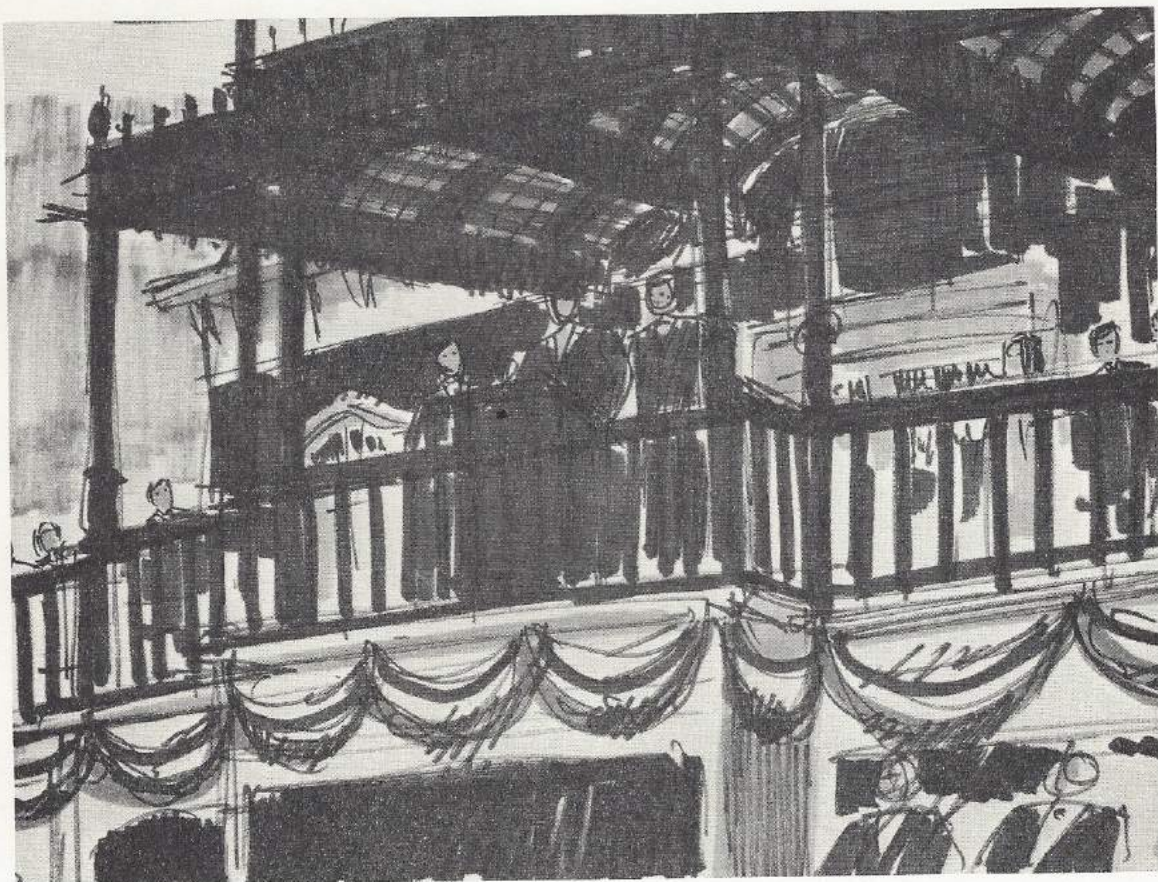
As soon as opening participants have cleared Town Square:

VII. 2:06 p.m. OFFICIAL WELCOME

ANNOUNCER:

NARRATION: INTRODUCTION OF DONN TATUM

"LADIES AND GENTLEMEN...THE PRESIDENT OF WALT
DISNEY PRODUCTIONS, DONN TATUM."



On introduction, Donn Tatum to rise and move
to microphone in center of upper Train Station
platform.

OFFICIAL WELCOME
and
ACKNOWLEDGEMENTS

DONN TATUM
(approximately five minutes)

VIII. 2:11 p.m. OLD FASHIONED MAIN STREET PRODUCTION NUMBER

ANNOUNCER:

NARRATION: INTRODUCTION OF MAIN STREET PRODUCTION
NUMBER AND PARADE

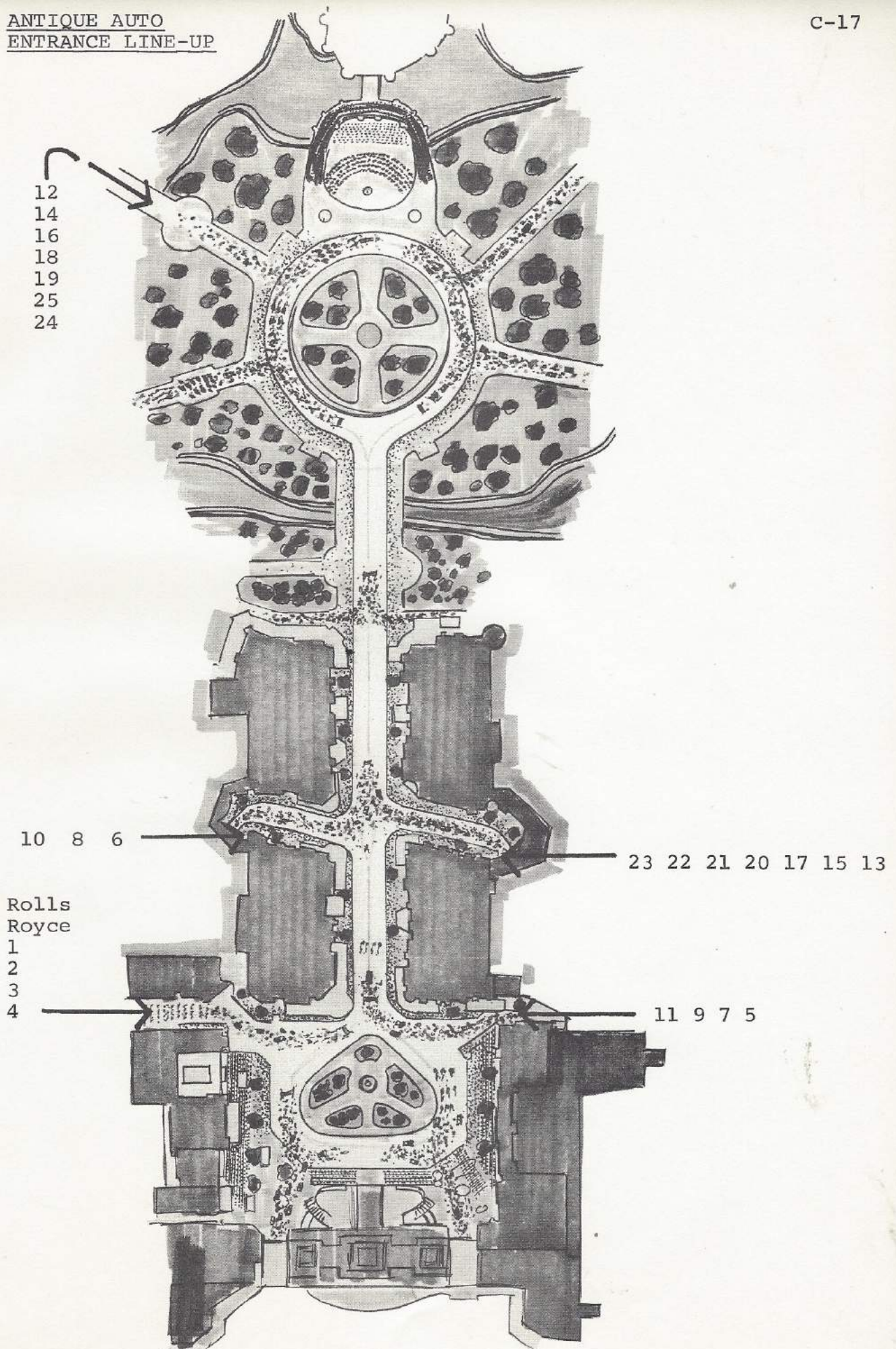
"AND NOW, LADIES AND GENTLEMEN...WE PRESENT
MORE THAN FIVE THOUSAND PERFORMERS IN WALT
DISNEY WORLD'S GRAND OPENING DAY EXTRAVAGANZA."



On introduction, participants and vehicles in the Production Number to rush on to Main Street during the first forty seconds of the production tape to take positions for the start of the choreographed number.

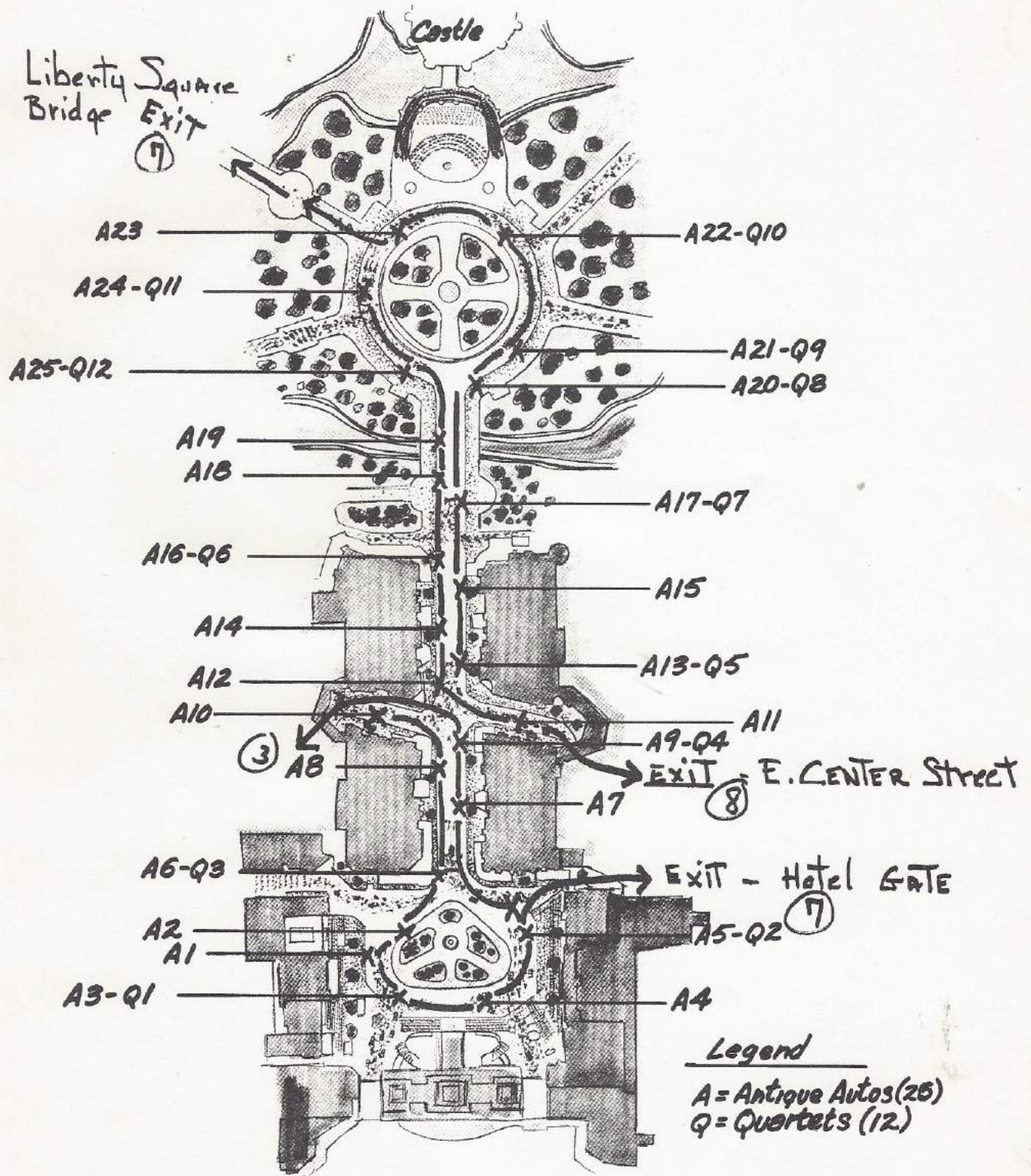
MUSIC: "FORTUOSITY"

Special pre-recorded production tape with orchestra and chorus.



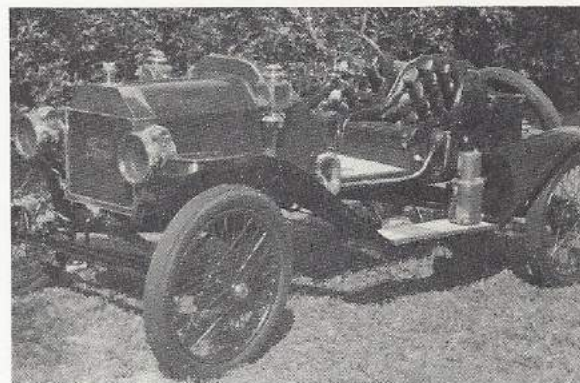
MAIN STREET PRODUCTION UNIT LOCATIONS

C-18

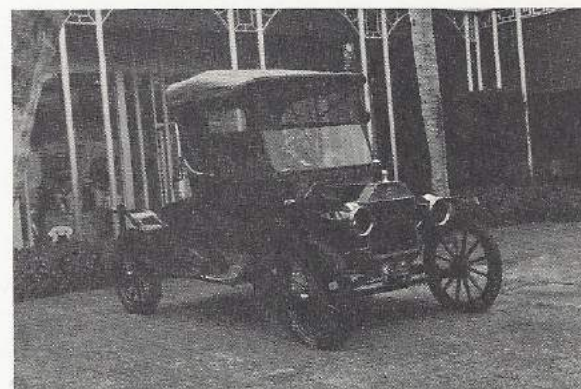


I. STAGING ASSIGNMENTS FOR ANTIQUE AUTOSStage Location

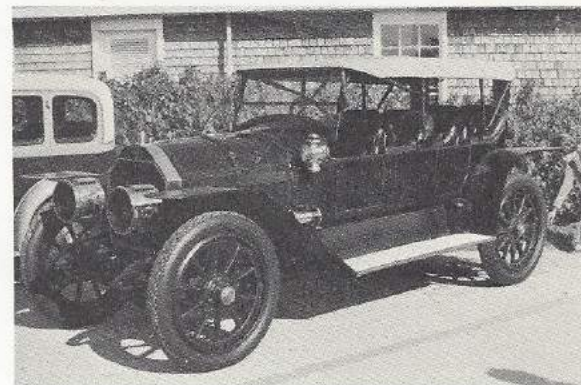
- A1. 1913 Ford "T" Speedster
Sam Musick
5461 State Road 579
Saffner, Florida 33584



- A2. 1914 Ford "T"
John Kiner
1403 S. Broadway
Fontana, Florida 33460



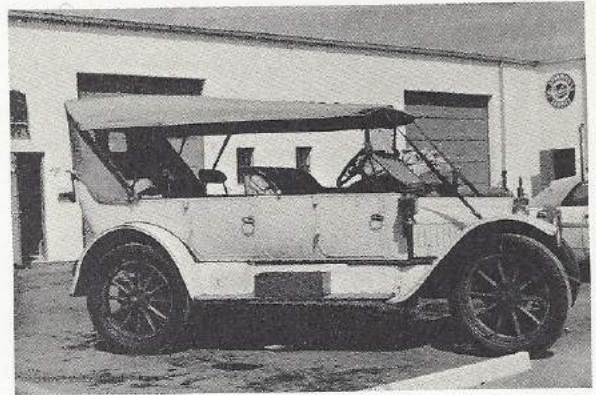
- A3. 1913 Simplex
Richard K. Carroll
P.O. Box 877
Jensen Beach, Florida



- A4. 1904 Stanhope Electric
Sidney Strong
P.O. Box 188
Silver Springs, Florida



- A5. 1911 White Touring Car
James P. Thomas
7231 S.W. 128 Street
Miami, Florida



- A6. Main Street Vehicle
Operations driver

- A7. Main Street Vehicle
Operations driver

- A8. 1916 Saxon Roadster
Thomas C. Hansen
3955 Corrigan Court
Lake Worth, Florida



- A9. 1910 Rolls-Royce
Mulliner Roadster
Millard W. Newman
P.O. Box 2030
Tampa, Florida 33601



- A10. 1897 Motor Buggy
Bill Tedesco
913 E. Linebaugh
Tampa, Florida *

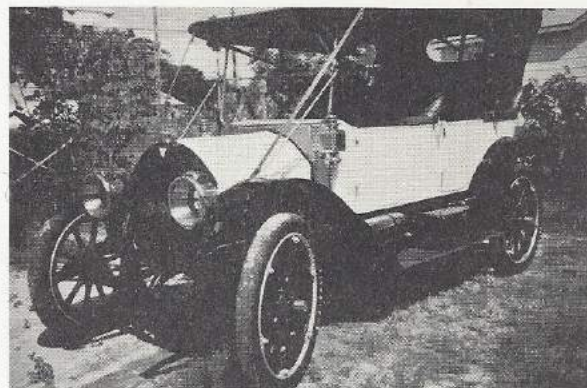


- A11. Main Street Vehicle
Operations driver

- A12. 1903 Pope Tribune
Charles L. Pope
8809 S. Indian River Dr.
Fort Pierce, Florida



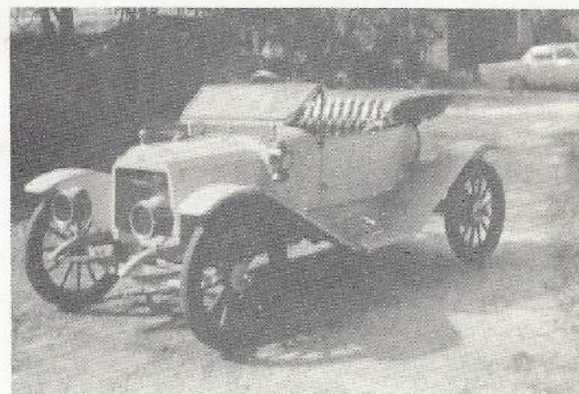
- A13. 1912 Hudson Touring
Walter O. Johnson
6219 - 43rd Street
Tampa, Florida 33610



- A14. 1913 Ford "T" Runabout
The William P. Sigmunds
3112 Marlin Avenue
Tampa, Florida 33611



- A15. 1911 Studebaker Roadster
O. Clyde Davis
40 East 59th Street
Jacksonville, Florida



- A16. 1911 "EMF" Touring Car
Robert C. Weiskopf
29 Riverside Drive
Tayson Springs, Florida



- A17. 1913 Knox
James P. Thomas
7231 S.W. 128 St.
Miami, Florida 33196



- A18. Main Street Vehicle
Operations driver

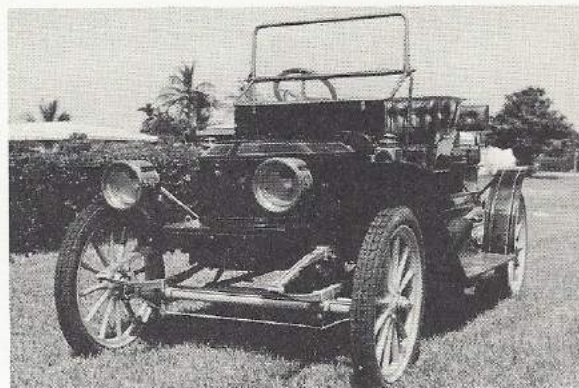
- A19. 1910 Cutting
James P. Thomas
7231 S.W. 128 St.
Miami, Florida 33196



- A20. 1912 Studebaker E.M.F.
Nathan C. Linnell
1105 S. "L" Street
Lake Worth, Florida



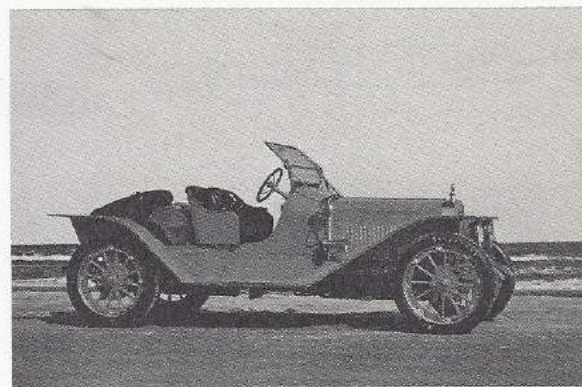
- A21. 1911 Stanley Steamer
Harold F. Culp
170 N.E. 158 Street
Miami, Florida 33162



- A22. 1905 Queen-Top Up
Emerson Clavel
Box 98
Wauchula, Florida

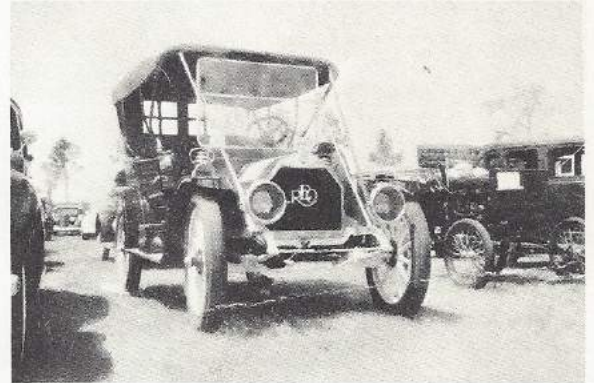


- A23. 1913 Lozier
Jerry S. Foley III
3624 Richmond St.
Jacksonville, Florida



- A24. Main Street Vehicle
Operations driver

A25. 1910 Reo Touring Car
Joan and Steve Gordon
P.O. Box 54
Lake Worth, Florida 33460



Note:

- (1) Early antique auto to have one guest with driver dressed in period wardrobe.
- (2) We will provide each driver with duster, goggles and caps.

STAGING ASSIGNMENTS FOR BARBERSHOP QUARTETS

Each barbershop quartet to be dressed in their own wardrobe. Walt Disney World to supply straw hats only.

One barbershop quartet to be placed in each touring car assigned as follows:

BARBERSHOP QUARTETS

QUARTET #1:	<u>IMPACT!</u> Bob Boemler Al Ponterio	Bill Wood Dick Pinkerton
QUARTET #2:	<u>INTERSTATE 4</u> Dick Bame Barry Porter	Cline Clary Irv Wells
QUARTET #3:	<u>SUNSATIONS</u> Leon Armentrout Burt Ayres	Dick Byers Bob Valone
QUARTET #4:	<u>C.O.D.'S</u> Chuck Pritchett Ed Kinner	Don Anderson Phil Hansen
QUARTET #5:	<u>MILLS STREET 4</u> Jack Ellis Don Feagan	Bill Oehrtman Harold Aubuchon
QUARTET #6:	<u>BOYS ON THE CORNER</u> Sy deVries Gordon Thomas	Peter Marks Bob Geil
QUARTET #7:	<u>SIX MINUS TWO</u> George Morrison Bob Blackwood	Bob Swan Jim Toole
QUARTET #8:	<u>MID-FLORIDA 4</u> Forrest Haynes Bob Mack	Burt Szabo Joe Franus
QUARTET #9:	<u>CAROLERS</u> Ed Zambelli Jim Roe	Dan Ritz Bill Farmer
QUARTET #10:	<u>AWARES</u> Bill Dunclee Bud Sangbush	John Ware Stephen Ware
QUARTET #11:	<u>DAPPER DANS</u> Bub Thomas Jerry Siggins	Richard Kneeland Bob Mathis
QUARTET #12:	_____ _____ _____	_____ _____ _____

III. SCENERY UNITSA. Antique Bicycles-supplied by Trepanier
-wardrobe by WDW1. Female: _____Male: _____2. Female: _____Male: _____3. Female: _____Male: _____4. Female: _____

5. Male:
6. Bob Trepanier - High Wheeler
7. Jean Trepanier - High Wheeler
8. Guenter Lennarz - High Wheeler



B. 22 Murry Tandem Bikes

Twenty-two boys and twenty-two girls dressed in Ice Cream Costume - white with yellow trim. Bikes on loan from WDW Recreation Department.

IV. DANCING UNITS

- A. 52 Keystone Kops - WDW
(best dancers available)

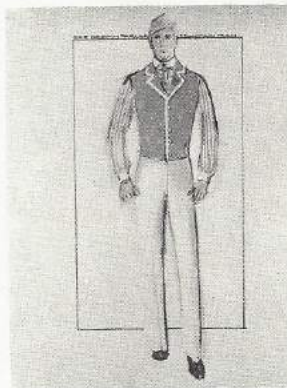


- B. 24 Hub Park Girls
with parasols - D/L
(good movers)



C. Town Square Couples - WDW

24 Girls

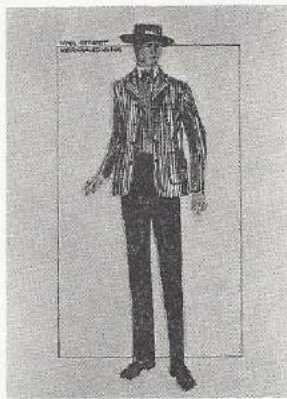


24 Boys

Yellow & White

D. Block One Couples

24 Girls



24 Boys

Green & White

E. Block Two Couples



24 Girls



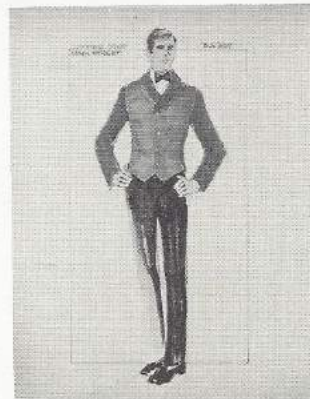
24 Boys

Red & White

F. Block Three Couples



24 Girls



24 Boys

Green & White

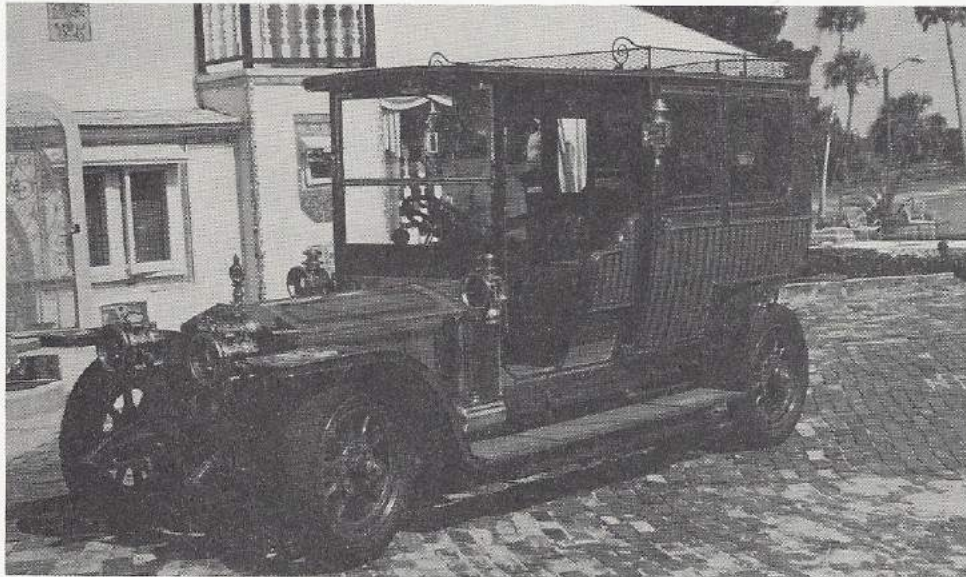
V. SUFFRAGETTE SEGMENT

- A. 16 Suffragette girls with red, white and blue sashes and placards to read:

1. We Try Harder
2. Ban The Man
3. Vote For Women
4. Win With Women
5. Free The Female
6. Women Will Purify Politics
7. Petticoat Power (2 signs)
8. Ladies Together
9. Flower Power
10. Liberate The Ladies
11. Females For Freedom
12. A Woman's Place Is At The Polls
13. No More Doting, Let's Get Voting
14. Give New Life To The Housewife
15. The Hand That Rocks The Cradle Rocks The World



- B. 1910 Rolls-Royce Pullman Limousine



Driver/Owner to be dressed in chauffeur attire to be provided by D/L - Inside vehicle will be the grand dowager w/appropriate wardrobe and suffragette props with live English Bulldog*- Car to be decorated with suffragette theme.

C. Heavy Suffragette lady carrying bass drum.

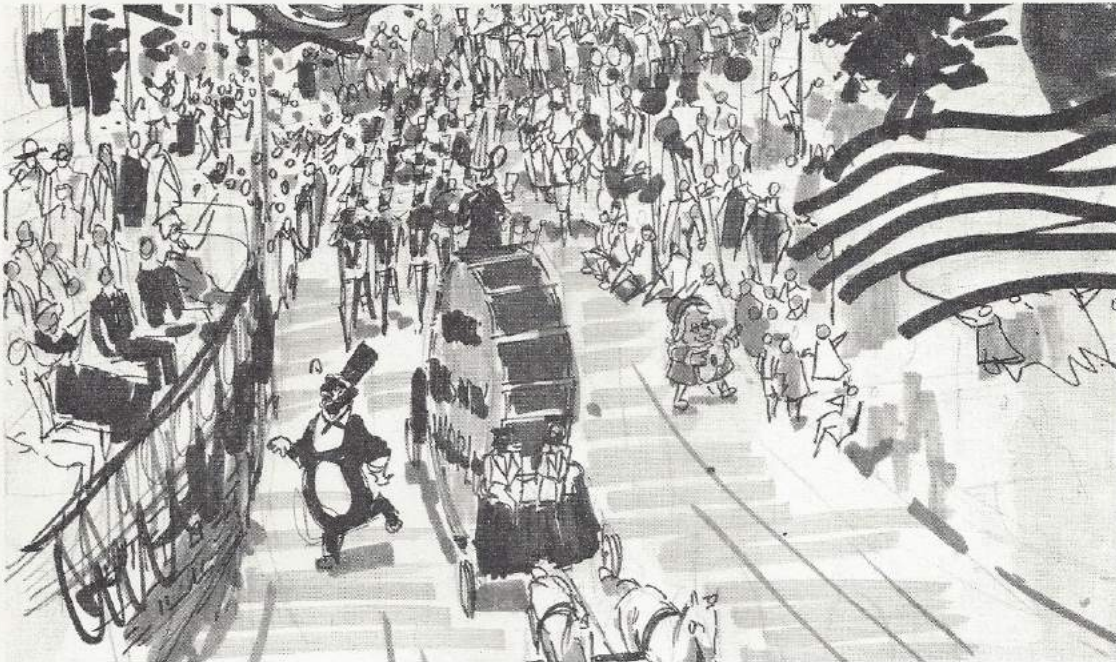
Head copy to read:



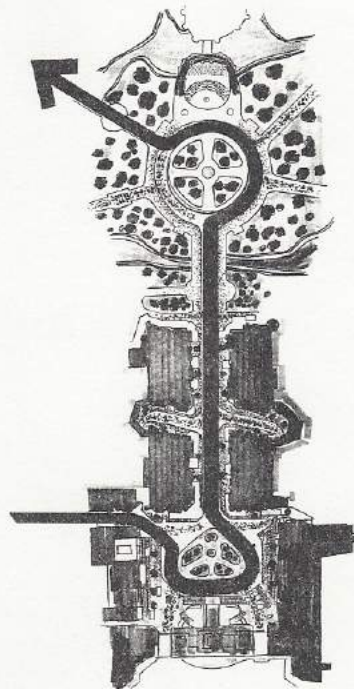
END OF PRODUCTION NUMBER

Immediately upon the end of the Production Number, Walt Disney World On Parade to step off through the Fire Station gate, circling around Town Square in front of the reviewing stand and up Main Street around the east side of the Hub and exiting via the Liberty Square bridge.

IX. 2:19 p.m.

GRAND PARADE

Parade Route: Entrance via Fire Station moves counter clockwise in front of Railroad Station, up Main Street, around Plaza Hub East and exit to Liberty Square.



PARADE LINE UPTITLE UNITEIGHT FANFARE TRUMPETS

Music: "Fanfare" to be
played with WDW Band

WDW MARCHING BAND

Music: "King Mickey Fanfare
and March" Jim Christensen,
Director.

Wardrobe: WDW

BIG BASS DRUM

(pulled by six ponies)

- 1 - WDW Ambassador
- 2 - Driver
- 3 - Mickey Mouse #2
- 4 - Livestock assistant

DISNEY CHARACTER UNITDISNEY CHARACTERS

- 1. Minnie Mouse
- 2. Goofy
- 3. Pluto
- 4. Dumbo
- 5. Dale
- 6. Chip

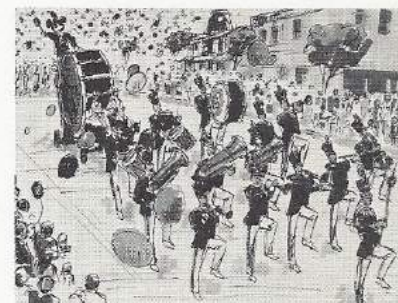
DIVISION I

5 4
6 3
7 2
8 1

Wardrobe: Disneyland
white winter
Band uniforms

1
5 4 3 2
9 8 7 6
13 12 11 10
17 16 15 14
21 20 19 18

x x 4
x x
x x
2 1
3



Wardrobe: WDW

- C-1. WDW Ambassador
- C-2. Band Uniform
- C-3. Mickey Mouse #2
- C-4. Band Uniform

Wardrobe:

1
3 2
6 4 5

WDW
1 4
2 5
3 6

7. Alice
8. White Rabbit
9. Practical Pig
10. Mad Hatter
11. Walrus
12. Fiddler Pig
13. Tweedle Dee
14. Tweedle Dum
15. Fifer Pig
16. Queen of Hearts
17. Little King
18. Wolf
19. Jaques
20. Cinderella
21. Gus Gus
22. Step Sister
23. Step Mother
24. Step Sister
25. Brer Rabbit
26. Brer Fox
27. Brer Bear
28. Penguin
29. Mary Poppins
30. Penguin

9 8 7
12 11 10
15 14 13
18 17 16
21 20 19
24 23 22
25
27
27 26
29
30 28

WDWD/L

7 13
8 14
9 16
10 17
11 20
12 22
15 23
18 24
19 31
21 32
25 33
26
27
28
29
30

PEARLY BAND

Music: "Mary Poppins Medley"

1. Kadiddlehopper-female
- 2-7. Musicians-male

1
3 2
4
6 5
7

Wardrobe: WDW

DISNEY CHARACTERS

31. Gideon
32. Pinocchio
33. Foul Fellow
34. Gepetto
35. Thumper
36. Flower
37. Doc
38. Happy
39. Grumpy
40. Sleepy
41. Sneezy
42. Bashful
43. Dopey
44. Snow White
45. Witch
46. Winnie the Pooh
47. Peter Pan

33 32 31
35
36
37
38
39
40
41
42
43
44
45
47 46

Wardrobe:

WDWD/L

34 46 48
35 47
36 49
37 50
38
39
40
41
42
43
44
45

48. Tigger
49. Yellow Rabbit
50. Mr. Smee
51. Owl
52. Kanga & Roo
53. Capt. Hook
54. Heffalump
55. Heffalump
56. Crocodile
57. Eeyore
58. Fat Cat
59. Hippie Cat
60. Guiseppe Cat

16 HORSEMEN

Wardrobe: Disneyland

LOVE BUG UNIT

LOVE BUG

1. Driver
2. Special guest star

Both driver and guest star dressed in racing outfits.

TOMORROWLAND UNIT

1. Female Rock Dancer
2. " " "
3. " " "
4. Autopia Car-male driver
5. " " " "
- 6-17. "Kids Next Door"
(6 male/6 female)
- 18-23. Six piece Rock Band-
"Dallas Sound Track"

Music: "Zippity Do-Dah"
(rock version)

50 49 48

53 52 51

56 55 54

57

60 59 58

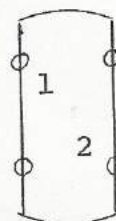
4 3 2 1

8 7 6 5

12 11 10 9

16 15 14 13

DIVISION II



2 1

3

5 4

10 9 8 7 6
15 14 13 12 11

17 16

20 19 18

23 22 21

WDW

D/L

51 52

53 54

56 55

59 57

60 58

61

62

63

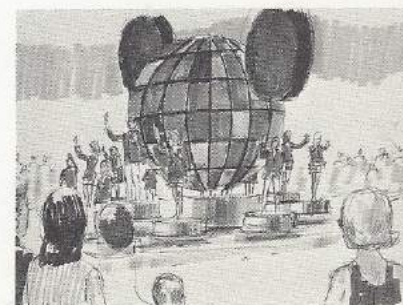


Vehicle: Car 53 with sun roof

To be borrowed from VW dealer in Orlando.
Decal kit at D/L from Entertainment Division



Theme Float



- 24. Female Rock Dancer
- 25. Autopia Car-male driver
- 26. Female Rock Dancer
- 27. Autopia Car-male driver
- 28. Male Rock Dancer
- 29. Autopia Car-male driver
- 30. Male Rock Dancer
- 31. Autopia Car-male driver
- 32. Male Rock Dancer
- 33. Autopia Car-male driver
- 34. Male Rock Dancer
- 35. Autopia Car-male driver
- 36. Female Rock Dancer
- 37. Autopia Car-male driver
- 38. Female Rock Dancer
- 39. Float Driver

NOTE: Each autopia car (9)
to have a guest child
from invited celeb-
rities wearing own
wardrobe

PROPS: All dancers to use
tambourines



26	25	24
29	28	27
32	31	30
35	34	33
38	37	36

Wardrobe:

27 Kids of the Kingdom
wardrobe for:

9 drivers of Autopia
cars (4 male, 5 female)

6 piece Rock Band (male)

12 Kids Next Door
(6 male-6 female)



11 Dancers: "New Orleans
Rock"

Wardrobe from "Show Me
America"

4 Male-white jumpsuit
4 Female-red jumpsuit
2 Female-blue jumpsuit
1 Female-white jumpsuit



J. FANTASYLAND UNIT

1-College Male puller
2-College Female puller
(pulling canon with
two soldiers)

3-College Male puller
4-College Female puller
(pulling canon with
one soldier)

5-College Male puller
6-College Female puller
(pulling canon with
one soldier)

7-Driver-Battle Ship
with Dingy

8-College Male puller
9-College Female puller
(pulling Medieval Knight)

10-College Male puller
11-College Female puller
(pulling Medieval Knight)

12-College Male puller
13-College Female puller
(pulling Medieval Knight)

21

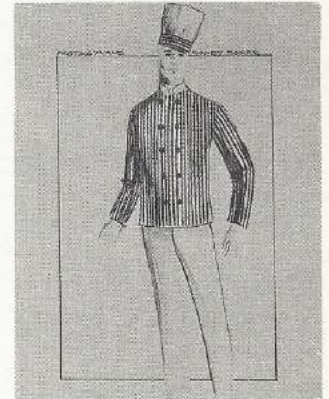
65 43

7

11 10 98

13 12

Wardrobe:

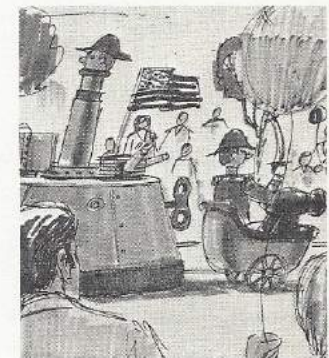


(12 college male)
Fantasyland Candy Shop



(12 college female)
Fantasyland Candy Shop

Prop 7



Music: "March of The Toys"

14-37 24 Herald Tumpets
 38-56 19 Flapjack Drums
 57. Cymbal
 58. Field Drum
 59. Field Drum
 60. Cymbal
 61. Flapjack Drum
 62. College Male puller
 63. College Female puller
 (pulling soldiers on
 Horse)

19 18 17 16 15 14
 25 24 23 22 21 20
 31 30 29 28 27 26
 37 36 35 34 33 32
 43 42 41 40 39 38
 49 48 47 46 45 44
 55 54 53 52 51 50
 61 60 59 58 57 56

64. College Male puller
 65. College Female puller
 (pulling French Soldiers)

66. College Male puller
 67. College Female puller
 (pulling four soldiers)

65 65 63 62

68. College Male puller
 69. College Female puller
 (pulling canon with one
 soldier)

67 66

70. College Male puller
 71. College Female puller
 (pulling canon with one
 soldier)

71 70 69 68

72. Extra puller
 73. Extra puller
 74. Mary-Girl costume
 75. Tom-Boy costume

73 72

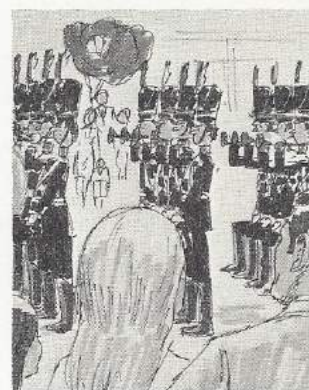
75 74

FANTASIA UNIT

1. Hippo	Male	Dancer
2. Alligator	"	
3. Hippo	"	
4. Alligator	"	
5. Hippo	"	
6. Alligator	"	
7. Hippo	"	
8. Alligator	"	
9. Mushroom	"	
10. "	"	
11. "	"	
12. "	"	
13. Ostrich	Female	Dancer
14. "	"	
15. "	"	
16. "	"	

2 1
 4 3
 6 5
 8 7
 10 9
 12 11
 14 13
 16 15

Wardrobe Source:
 Disneyland
 (Fantasy on Parade
 costumes)



ADVENTURELAND UNIT

1. Prop Carrier
2. Female Primitive Dancer
3. " " "
4. " " "
5. " " "
6. Prop Carrier
7. " "
8. Female Oriental Dancer
9. " " "
10. " " "
11. " " "
12. " " "

8 Wardrobe WDW



13. Prop Carrier



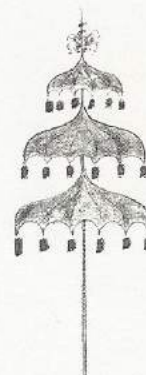
1, 6, 7, 36, 37,
(also Calypso Unit
26, 27)

Prop Carrier Wardrobe
WDW

DIVISION III

- 1
- 4 3
- 5 2
- 7 6
- 8
- 10 9
- 12 11
- 13

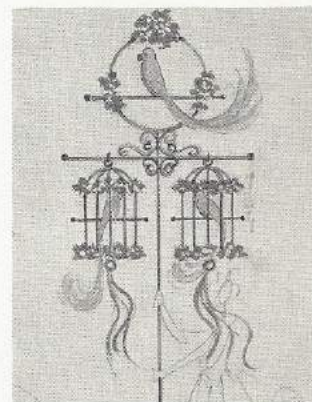
1 Umbrella



6 & 7 Large Bird



13 Birdcage



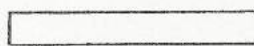
14- Tiki Hut Carrier
 15- " " "
 16- " " "
 17- " " "
 18-Tahitian Dancers (from
 Polynesian Revue)
 19- " " "
 20- " " "
 21- " " "
 22- " " "
 23- " " "
 24-Mowgli
 25-Baloo
 26-King Louis
 27-Colonel Hathi(2)
 28-Tiki Hut Carrier
 29- " " "
 30- " " "
 31- " " "
 32-Prop Carrier-Birdcage
 33-Female Dancer-Merchandise
 34- " " "
 35- " " "

36-Prop Carrier-Sun Face
 37-Prop Carrier-Fruit
 Basket

37 Fruit Basket



NOTE: Colonel Hathi, No.27,
 will use two (2)
 Pageant Helpers making
 the grand total 38.



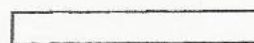
17 16 15 14

19 24 18

21 20

23 26 25 22

27



31 30 29 28

32

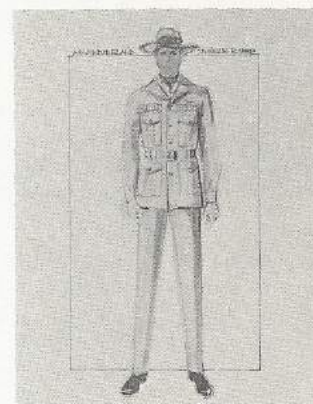
34 33

35

37

36

13 (2) Birdcage Prop
 32 Carrier



33 Female Dancer
 Merchandise (14)



36 Sun Face



CALYPSO UNIT

1. Female Dancer
2. " "
3. Male Dancer
4. " "
5. Female Dancer
6. " "
7. Male Dancer
8. " "
9. Female Dancer
10. " "
11. Male Dancer
12. " "
13. Female Dancer
14. " "
15. " "
16. " "
17. " "
18. Wagon Driver
19. Livestock Assistant
- 20-25. Steel Band Musicians
26. Prop Carrier-Umbrella
27. Prop Carrier-Umbrella

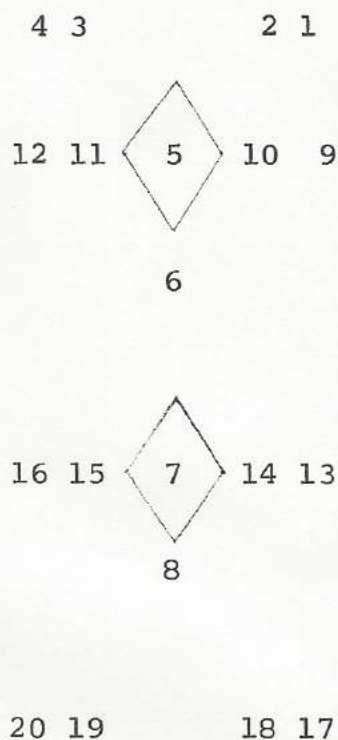
2		1	18 Calypso Wagon
	19		
4		3	
6		5	
	18		
8		7	
	21 20		
10		9	
	23 22		
12		11	
	25 24		
14		13	
	16 15		
	17		
	27 26		



Music: "Yellow Bird"

SMALL WORLD UNIT

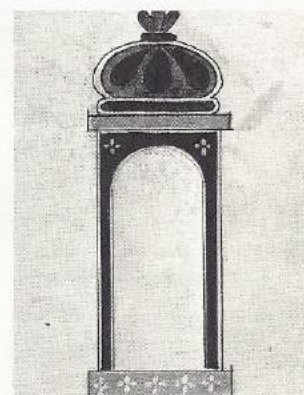
1-Large Balloon Prop Aide male
 2- " " " " female
 3- " " " " male
 4- " " " " female
 5-Foreign Exchange Student
 6-Arch Pusher
 7-Foreign Exchange Student
 8-Arch Pusher
 9-Folk Dancer Female
 10- " " Male
 11- " " Male
 12- " " Female
 13- " " Female
 14- " " Male
 15- " " Male
 16- " " Female
 17-Large Balloon Prop Aide male
 18- " " " " female
 19- " " " " male
 20- " " " " female

DIVISION IV

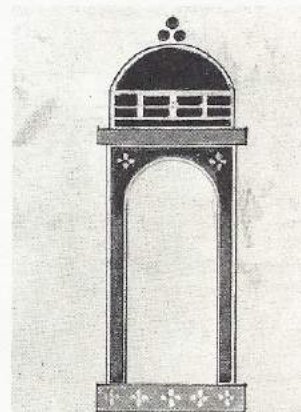
1 Balloon Prop



5 Arch

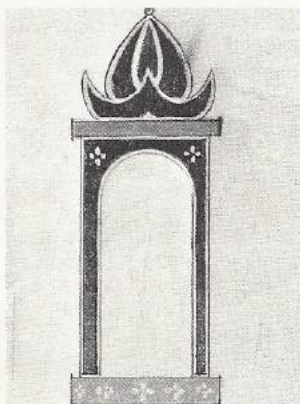


7 Arch



21-Foreign Exchange Student
 22-Arch Pusher
 23-Foreign Exchange Student
 24-Arch Pusher
 25-Folk Dancer-female
 26- " " male
 27- " " male
 28- " " female
 29- " " female
 30- " " male
 31- " " male
 32- " " female
 33-Large Balloon Prop Aide
 34- " " " "
 35- " " " "
 36- " " " "
 37-Foreign Exchange Student
 38-Arch Pusher
 39-Foreign Exchange Student
 40-Arch Pusher
 41-Folk Dancer-female
 42- " " male
 43- " " male
 44- " " female
 45- " " female
 46- " " male
 47- " " male
 48- " " female
 49-Large Balloon Prop Aide
 50- " " " "
 51- " " " "
 52- " " " "

39 Arch



28 27 21 26 25

22

32 31 23 30 29

24

36 35 34 33

44 43 37 42 41

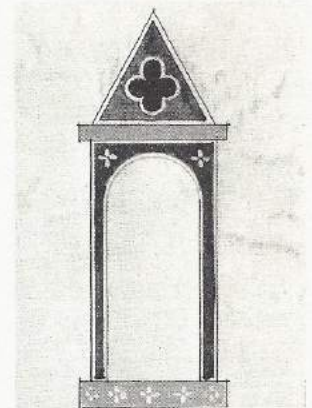
38

48 47 39 46 45

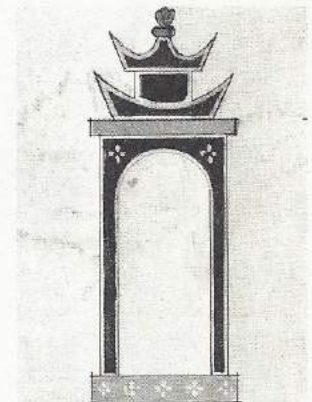
40

52 51 50 49

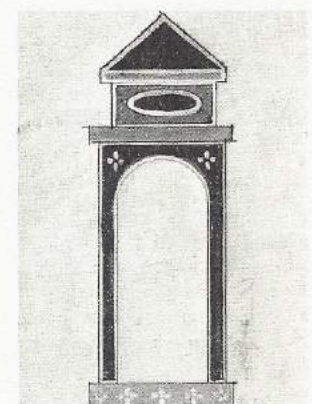
21 Arch



23 Arch



37 Arch



53-Small World Band

54- " " "
 55- " " "
 56- " " "
 57- " " "
 58- " " "
 59- " " "
 60- " " "
 61- " " "
 62- " " "
 63- " " "
 64- " " "
 65- " " "
 66- " " "
 67- " " "
 68- " " "

56 55 54 53

60 59 58 57

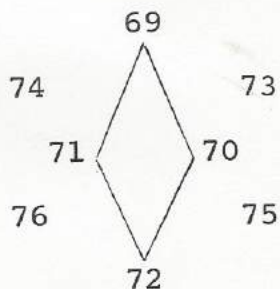
64 63 62 61

68 67 66 65

Music: "It's A Small
World March"

69-Foreign Exchange Student

70- " " "
 71- " " "
 72- " " "
 73-Large Balloon
 74- " "
 75- " "
 76- " "



SMALL WORLD UNIT WARDROBE

Source: WDW

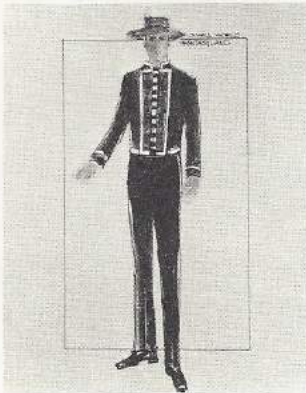
Prop Aides Male (10)
1



Prop Aides Female (10)
2



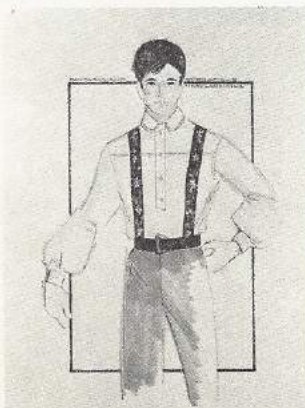
Arch Pushers Male (10)
6



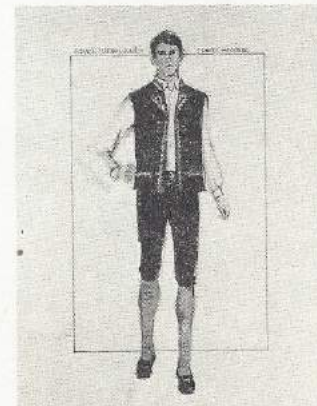
Folk Dancers Female (12)
9



Folk Dancers Male (12)
10



Small World Band Male (16)
53



FRONTIERLAND UNIT

1-Jose Carrioca
2-Panchito
3-Donald Duck
4-10-"Los Gallos" Mariachi
Band

Music: "The Three Caballeros"

11-13-Livestock Assistant (3)
14-16-Livestock Driver (3)
17-22-Diamond Horseshoe
Principals
23-26-Diamond Horseshoe
Dancers
27-Mile Long Bar Principal
28-35-Mile Long Bar Girls
36-Mile Long Bar Musician
37-40-Blue Grass Musicians (4)
41-72-Western Dancers (32)
16 Female *
16 Male

Music: "Foggy Mountain
Breakdown"

DIVISION V

1
3 2
4
10 9 8 7 6 5

The diagram illustrates the construction of a 13x13 magic square. It features three main components:

- Top Left:** A 3x3 magic square with a magic constant of 12. The numbers are arranged in a 3x3 grid:

15		
27		
30	29	28
33	32	31
35	34	

 Above the first and second columns are 'x' marks, and to the right of the second column is the number 12.
- Top Right:** A 4x4 magic square with a magic constant of 11. The numbers are arranged in a 4x4 grid:

14			
19	18	17	
22	21	20	
24	23		
26	25		

 Above the first and second columns are 'x' marks, and to the right of the second column is the number 11.
- Bottom Center:** A 3x3 magic square with a magic constant of 13. The numbers are arranged in a 3x3 grid:

16		
36		
38	37	
40	39	

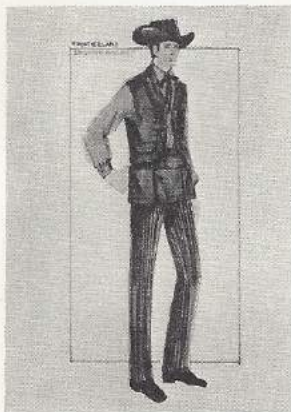
 Above the first and second columns are 'x' marks, and to the right of the second column is the number 13.

Below these squares, the numbers 44, 43, 48, 47, 54, 53, 60, 59, 66, 65, 72, 71, 52, 51, 50, 49, 58, 57, 64, 63, 62, 61, 70, 69, 42, 41, 46, 45, 56, 55, 68, 67 are listed in a grid-like fashion, representing the final 13x13 magic square.

14, 15, 16
Yellowstone Wagons

FRONTIERLAND UNIT WARDROBESource: WDWDrivers (3)

1,2,3

Dancers

16 Male

33

Dancers

8 Female

15

Dancers

16 Female

34



LIBERTY SQUARE UNIT

1-Flag Carrier
 2-Rocket Pusher
 3- " "
 4- " "
 5-Parade Aides Female
 6- " " male
 7- " " female
 8- " " male
 9-George Carrol

10-Ribbon Canopy Pusher
 11- " " "
 12- " " "
 13- " " "
 14- " " "
 15- " " "
 16- " " "
 17- " " "
 18-29 Fifes
 30-33 Field Drums
 34-Bass Drum

Music: "Yankee Doodle"

DIVISION VI

1

2

4 3

8	7	6	5
9			

13 12 11 10

21	20	19	18
25	24	23	22
29	28	27	26
33	32	31	30

17 16 15 14

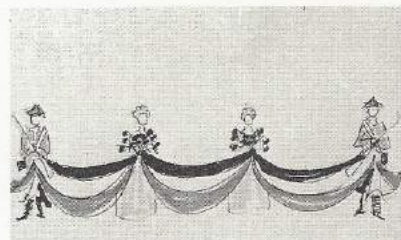
34

Prop N-1 Flag of
 Thirteen Colonies

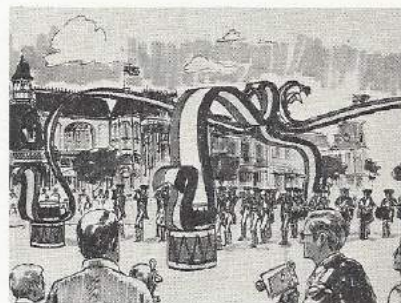
Prop 2



Prop 5 & 81



Prop 10



25-52 Townspeople

38 37

36 35

Prop 53

53-Town Crier w/Bill of Rights

44 43 42 41 40 39

54-Town Crier Pusher

55-Town Crier w/Dec. of Ind.

50 49 48 47 46 45

56-Town Crier Pusher

57-Ben Franklin

52 51

58-Ben Franklin Pusher

55

53

59-80 Townspeople

56

54

81-Parade Aide Female

57

82- " " Male

83- " " Female

58

84- " " Male

62 61

60 59

68 27 66 65 64 63

74 73 72 71 70 69

80 79 78 77 76 75

 84 83 82 81


Prop 57



LIBERTY SQUARE UNIT WARDROBESource: WDW

Flag Carrier (1)
 Rocket Pushers (3)
 1 thru 4



Parade Aides (4)
 5, 7, 80, 82



Parade Aides (4)
 6, 8, 81, 83



Townspeople
 58
 (10 Male)



Townspeople
 62
 (10 Male)



LIBERTY SQUARE UNIT WARDROBE (cont.)

Townspeople
35-W
(5 females)



Townspeople
42-W
(5 females)



Townspeople
68
(5 females)



Townspeople
74
(5 females)



1-50 Stage Flag Carriers (50)

DIVISION VII

Recruit Training Command
 50-State Flag Team
 Naval Training Center
 Orlando, Florida

5	4	3	2	1
10	9	8	7	6
15	14	13	12	11
20	19	18	17	16
25	24	23	22	21
30	29	28	27	26
35	34	33	32	31
40	39	38	37	36
45	44	43	42	41
50	49	48	47	46

Immediately following the entrance of the 50 U.S. Flags, the mobile Gazebo Podium carrying MEREDITH WILLSON to enter and remain in parade sequence until arriving at the top of Main Street even with The Emporium.

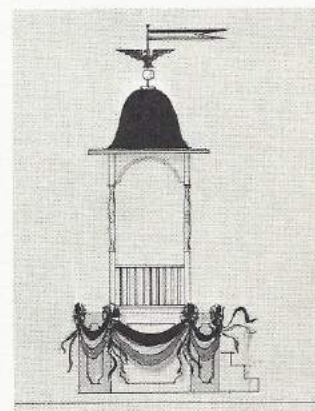
The mobile podium then halts and does not begin to move again until the 1076 Piece Ceremonial Marching Band steps off through the central tunnels.

1. Meredith Willson Podium
 with driver

1

2. Meredith Willson

2



As soon as the 50 State Flags hit the top of Main Street even with the Emporium, the U.S. Army Herald Trumpets will enter Town Square from the Hotel and Fire Station Gates to position facing the Train Station at the top of Main Street and halt.

X. 2:34 p.m. GRAND ENTRANCE
1,076 PIECE CEREMONIAL MARCHING BAND

Band from Honor Students from over 100 High Schools located throughout Central Florida.

Guest Conductor Meredith Willson

Assistant Conductors Colonel Samuel Loboda
(Train Station)

Gazebo 1 - E. W. Williams
Gazebo 2 - James Wilson
Gazebo 3 - Del Kieffner
Gazebo 4 - Mark Casey

ANNOUNCER:

NARRATION: INTRODUCTION OF 1,076 PIECE MARCHING BAND

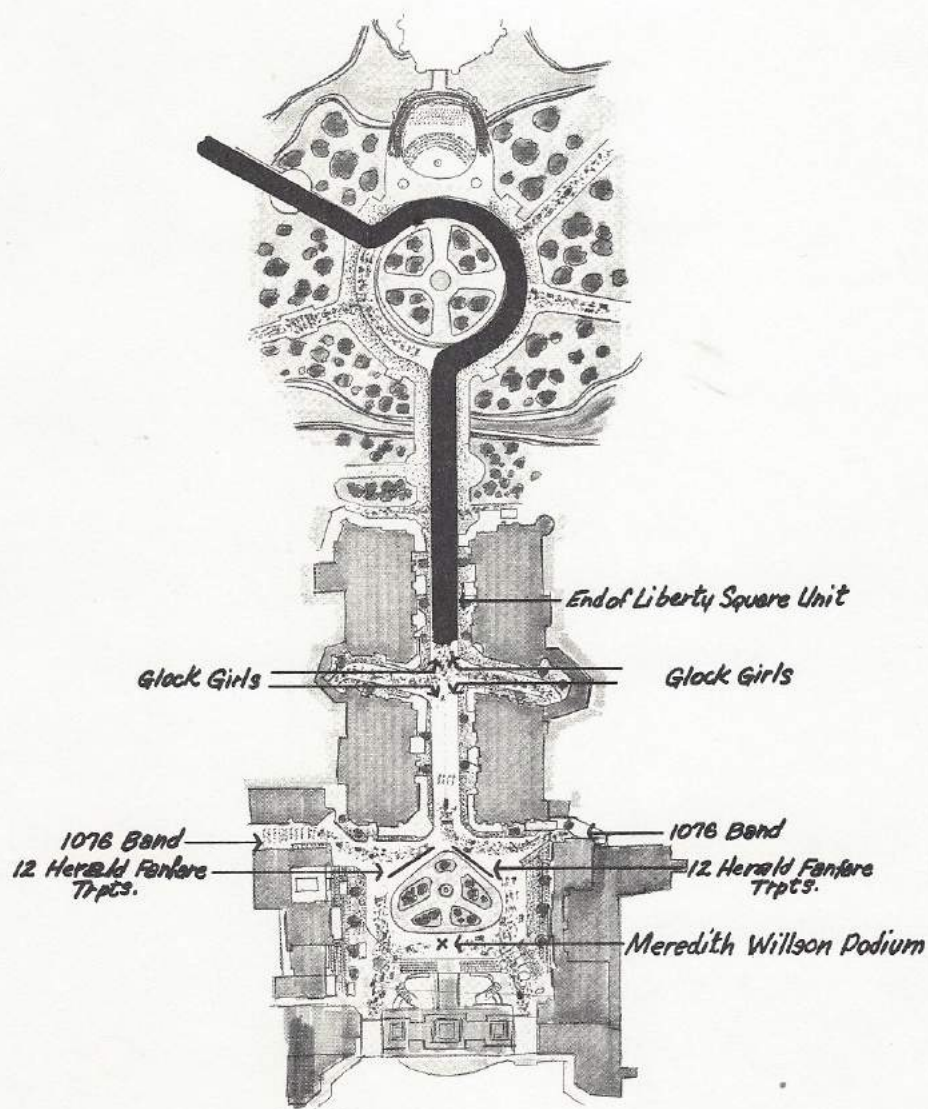
"LADIES AND GENTLEMEN... THE HERALD TRUMPETERS OF THE UNITED STATES ARMY BAND NOW SALUTE THE GRAND ENTRY OF THE WALT DISNEY WORLD ONE-THOUSAND-SEVENTY-SIX PIECE CEREMONIAL MARCHING BAND... UNDER THE DIRECTION OF MUSIC MAN MEREDITH WILLSON.

On the announcement, the U.S. Army Herald Trumpets to play the "76 Trombones Fanfare". Immediately following the fanfare, they step off moving up Main Street to the center of the hub repeating the fanfare as they go.

On the fanfare, the Glockenspiel Girls enter through the Center Street gates to their positions up and down blocks #1 and #2 on Main Street.

On the end of the fanfare, the drum section of the 1076 Piece Ceremonial Marching Band to "ROLL-OFF" beginning the Grand Entry of the 1076 Piece Band playing "76 Trombones" through the two central tunnels of the Train Station.

The Band to move via 'star pattern' on the street up Main Street to form 134 radius files completely encircling The Hub for the closing section of the number.



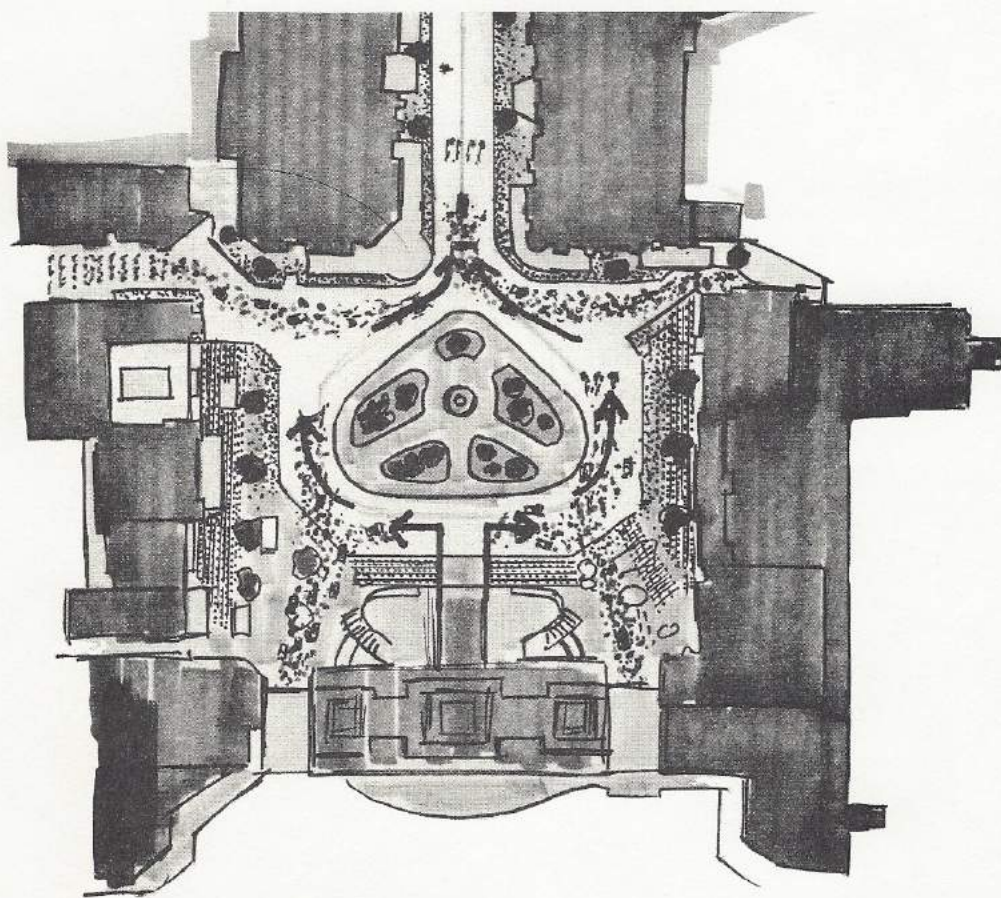
MUSIC: "SEVENTY SIX TROMBONES"

Introduction

1) 24 bars
standing still

2) Roll-off

Band enters via two central tunnels moving around Town Square in ranks of four, meeting at the top of Main Street, and proceeding in 134 ranks of eight.



MAIN STREET SEGMENT

Drums and Glocks Section

- 1) 32 bars/with repeats
- 2) Bells over/76 trombones



WALT DISNEY WORLD 1,076 PIECE OPENING DAY
CEREMONIAL BAND

<u>INSTRUMENTS</u>	<u>RANKS</u>
64 Piccolos	8
144 Clarinets	18
276 Trombones	34 + 4
210 Trumpets/Cornets	26 + 2
102 French Horns	12 + 6
72 Baritone Horns	9
72 Tubas	9
64 Snare Drums	8
16 Tenor Drums *	2
24 Bass Drums	3
32 Cymbal Players	4

1,076 Band

+	3 Tympani	2
+	Glockenspiels	N/A

RANKS

134 + 4 + 3

(as above)

(4 extra trombones)

(Tympani)

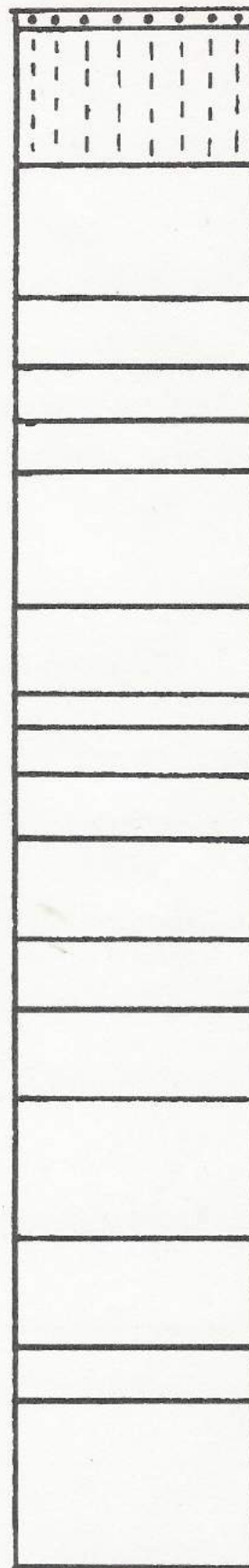
WALT DISNEY WORLD 1,076 PIECE
OPENING DAY MARCHING BAND

(134 Ranks + 4 men)

Glockenspiel bordering ranks
68 thru 134

4 trombones
extra
3 timpani
players

8 files



C-59
RANKS

17 Trombones

13 Trumpets

6 Horns

4 Baritones

4 Piccolos

9 Clarinets

8 Snare Drums

2 Tenor Drums

3 Bass Drums

4 Cymbals

9 Tubas

5 Baritones

6 Horns

13 Trumpets

9 Clarinets

4 Piccolos

17 Trombones
(plus 4 extra
trombones)

00 X 00 X
00 X

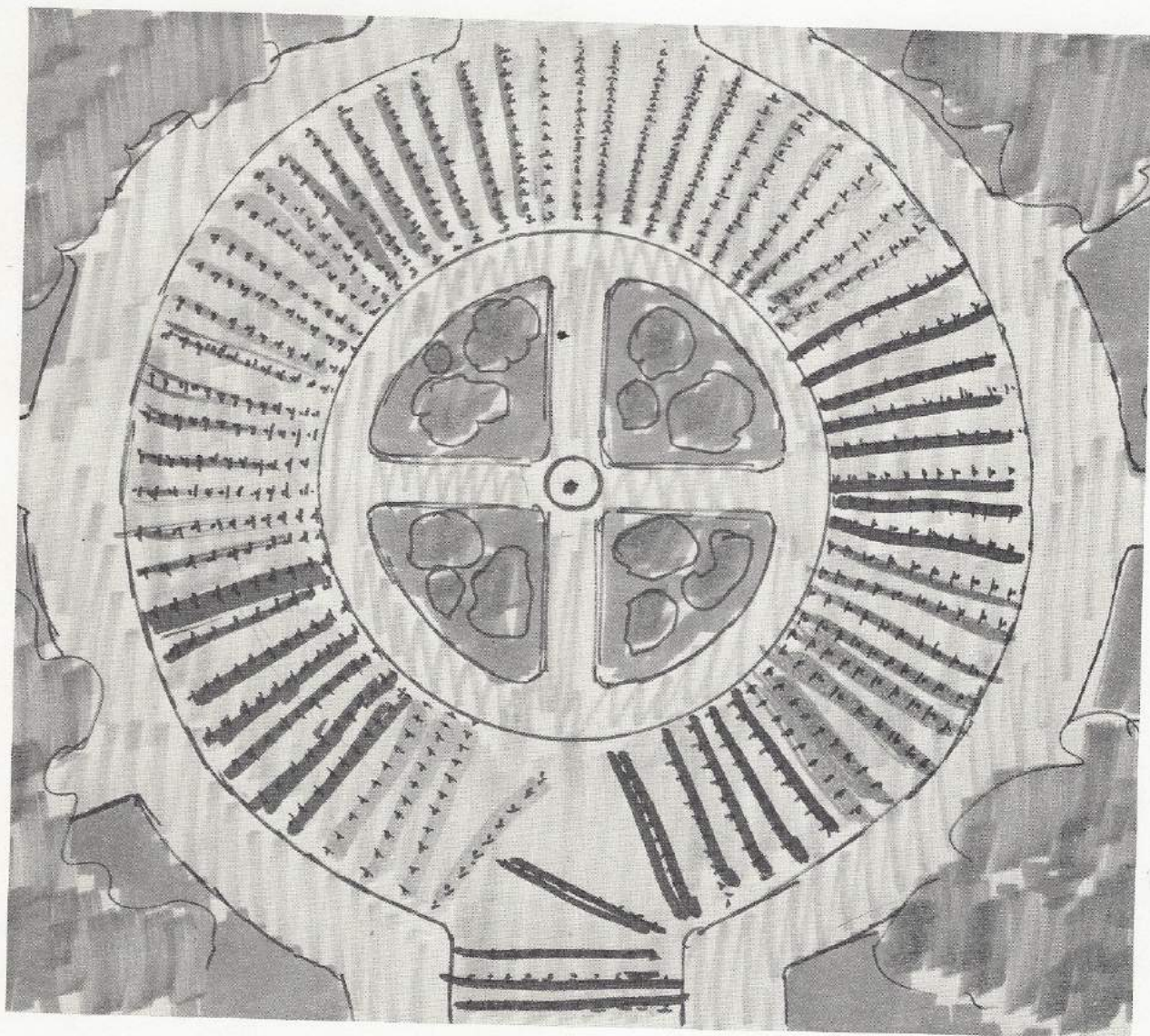
HUB SEGMENT

Second Introduction

- 1) Roll-off
- 2) 16 bars/Introduction

Hub Section

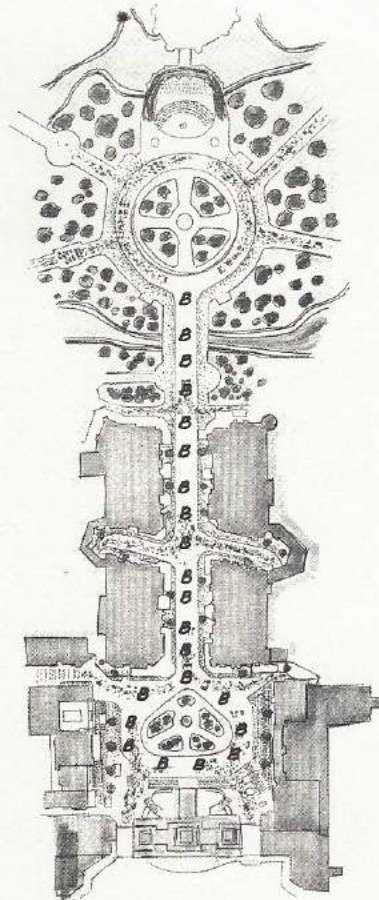
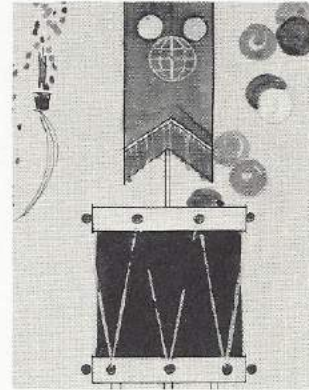
- 1) 2 minutes/76 Trombones/full band



Glockenspiel girls to end parade in circling perimeter of the Hub for Grand Finale.

As soon as the 1,076 Piece Band clears the top of Main Street, 24 Balloon Boxes pulled by 2 Boy Scouts each, to enter via the Hotel and Fire Station Gates to positions around Town Square and up Main Street to The Hub.

Balloon Box Locations



32-64 bars with Special Drum Section and Herald Trumpet Section set in prior to final end.

XI. 2:42 p.m. CLOSING SEGMENT

1) Carillon Peal Tape

2:43 p.m.

2) NARRATION: CLOSING PROLOGUE

ANNOUNCER: "LADIES AND GENTLEMEN...BOB HOPE!"

BOB HOPE: "IN EVERY CHILD, THERE IS A YEARNING TO
BE GROWN UP. IN EVERY ADULT, A DESIRE TO BE
A CHILD AGAIN. FOR ONE, THERE ARE DREAMS OF
A BRAVE FUTURE...FOR THE OTHER, MEMORIES OF A
HAPPY PAST.

THERE WAS SOMETHING OF BOTH IN WALT DISNEY...
AND TODAY, WE ARE WITNESSING THE FULFILLMENT
OF HIS DREAM - THE GRAND OPENING DEDICATION
OF WALT DISNEY WORLD.

THE LIFE AND MAGIC TO BE FOUND IN THIS
KINGDOM WILL PROVE - AGAIN AND AGAIN, THROUGH-
OUT THE YEARS - THAT DREAMS CAN COME TRUE."

XII. 2:45 p.m. GRAND FINALE

(All units Participating)

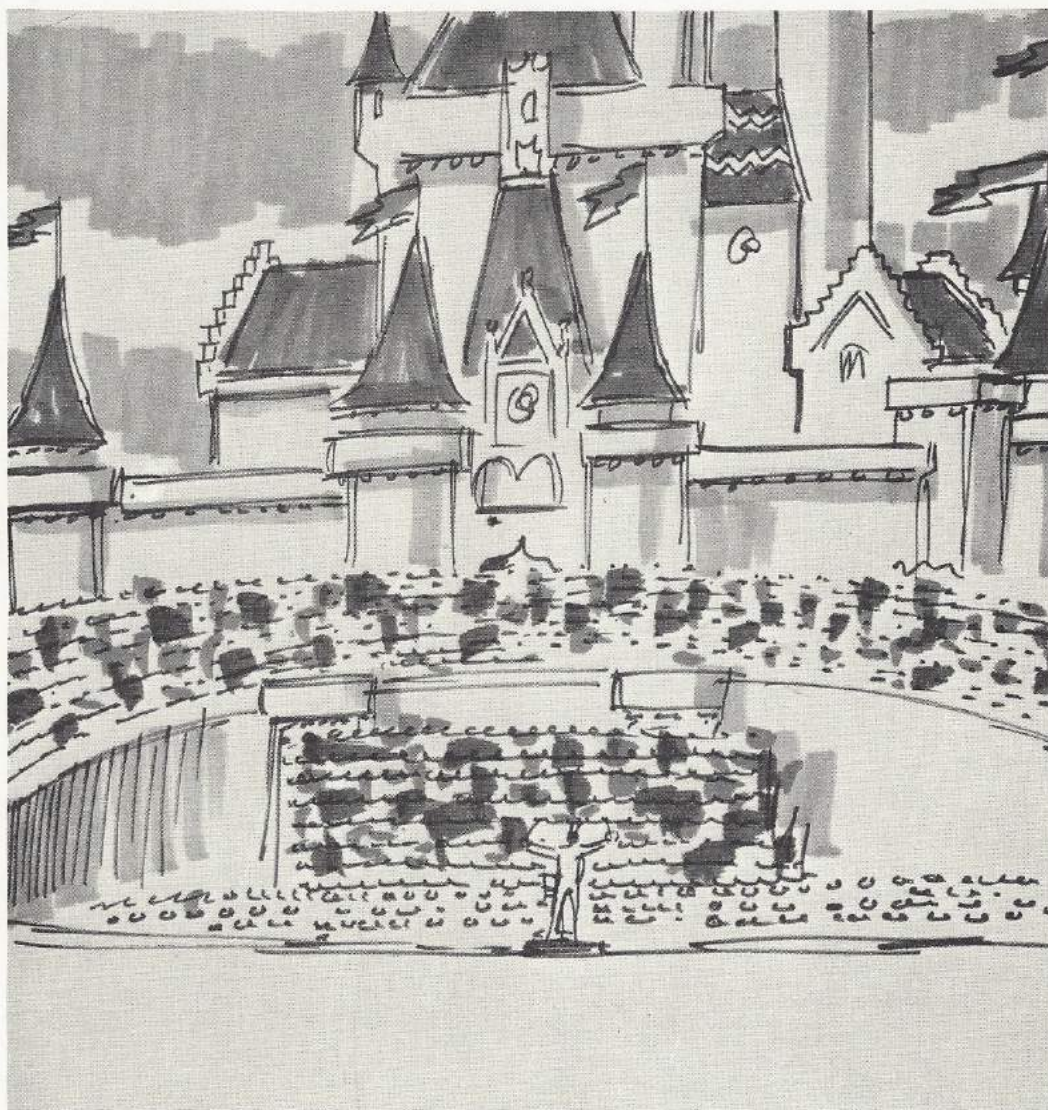
MUSIC: FANFARE

"When You Wish Upon A Star"
Selection 3-3½ minutes total

a. Fanfare/Herald Trumpets

b. Choir/A cappella

1) 30 seconds

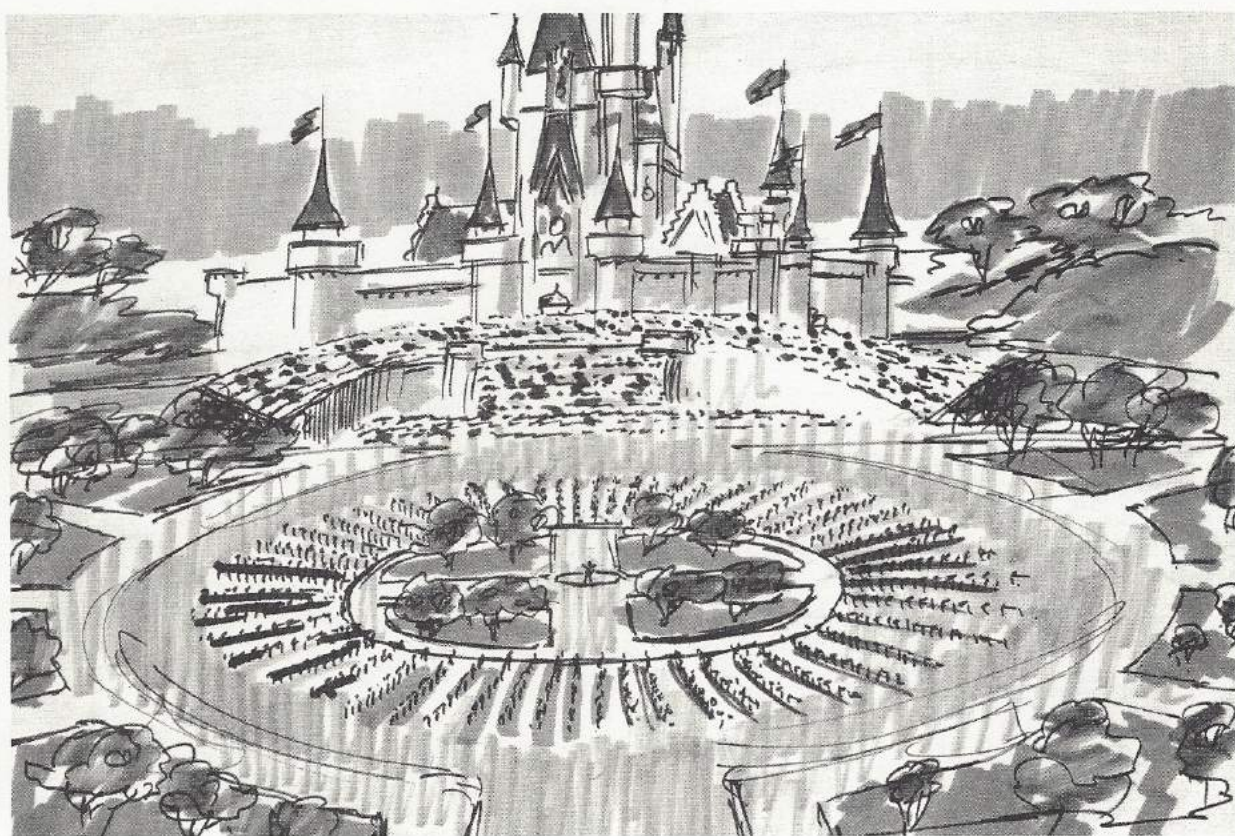


c. Symphonic Band and Chorus

1 minute

d. Symphonic Band/massed chorus/1,076
piece band/Glocks/Herald Trumpets

1 minute



e. Closing

1. Final 64 bars (30-45 seconds)

ACTION: a. Mickey Mouse #3 comes
into view on castle balcony
waving throughout the Final 64 bars.

b. Balloon launch (50,000)

NOTE: 100 balloon boxes to be
located;

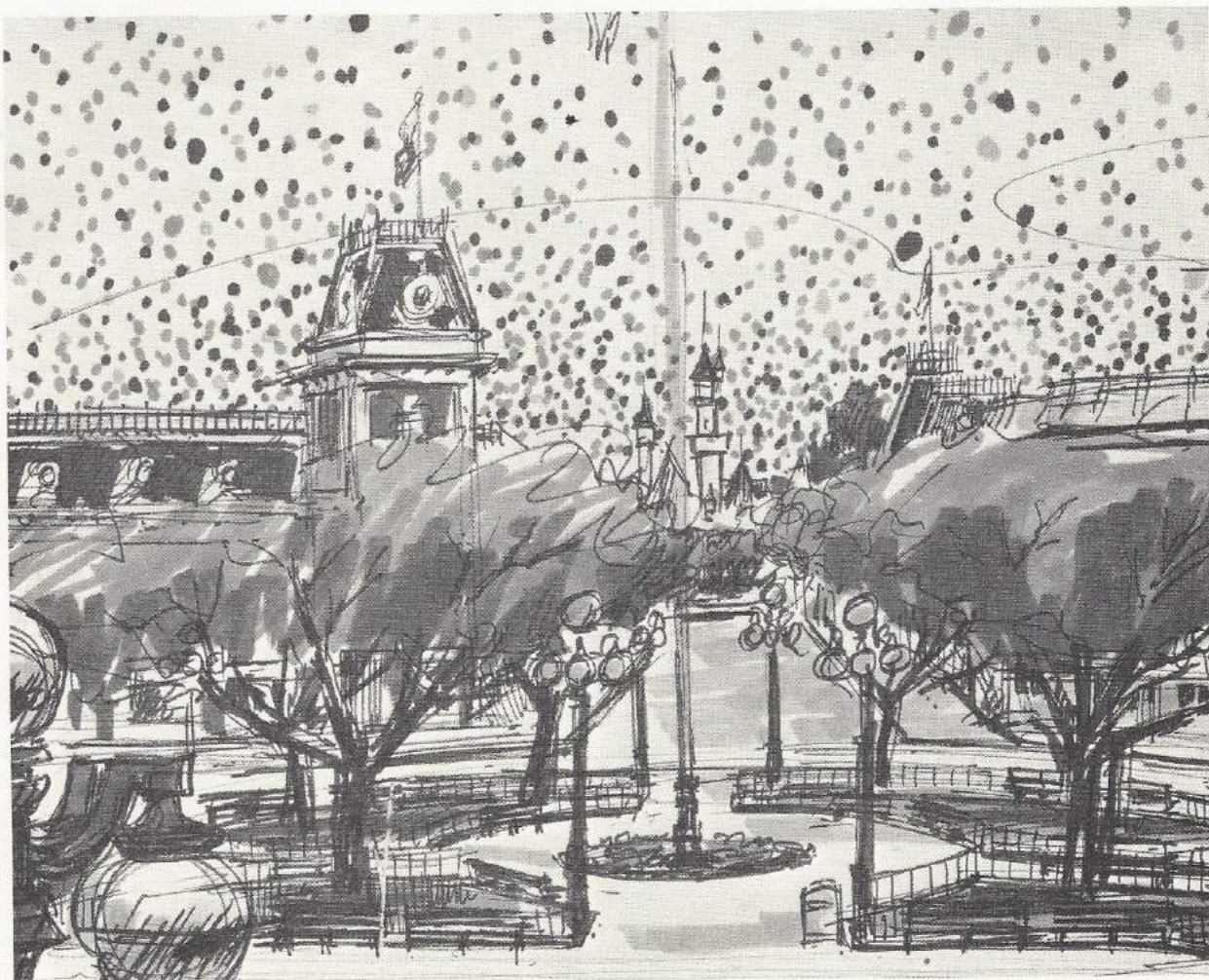
1. Behind Main Street

2. Lagoon Side of Train
Station

3. Behind Castle

Plus 24 balloon boxes on
Main Street

2:48 p.m.



Immediately following the conclusion of the Grand
Finale, all participants will remain silently in place
for three minutes before beginning a silent exit
from Main Street through Fantasyland.



D.

GENERAL INFORMATION

- I. THE GRAND OPENING DEDICATION COMMITTEE
- II. DAY THREE PRODUCTION ANALYSIS
- III. REHEARSAL SCHEDULES

I. THE GRAND OPENING DEDICATION COMMITTEE

* * *

Under the direction of

THE ENTERTAINMENT DIVISION

Bob Jani, Director

Chuck Corson, Assistant Director

Walt Disney World

Ron Miziker, Production Manager

Chuck Dargan, Administrative Manager

Disneyland

Ron Swartz, Production Manager

Vic Guder, Administrative Manager

* * *

with the cooperation of

THE WALT DISNEY STUDIO

WED ENTERPRISES

THE WALT DISNEY MUSIC COMPANY

BUENA VISTA DISTRIBUTING COMPANY

and

All of the Divisions of

DISNEYLAND

and

WALT DISNEY WORLD

And Scores And Scores of Others

DAY ITHE WORLD SYMPHONY ORCHESTRA GALA DEDICATION CONCERT

Project Director	Lee S. Mimms
Project Coordinator for People-to-People Programs	David L. Brigham
Publicity Coordinator	James Stewart
Press Relations for Walt Disney World	Sandy Quinn Charlie Redgeway
Music/Rehearsal/Program Consultant	Carmen Dragon
Mus/Rehearsal/Program/Writing/Consultant	Charles Fowler
Design Consultant	Kenneth Dresser
Project Coordinators for Walt Disney World	Tom Garrison Dick Bain
Orchestra Manager	William Shisler
Orchestra Librarian	Robert Bockholt
Orchestra Stage Manager	Peter Bloustein
Staging/Technical Coordinators	Bill Blanton Bill Young
Legal Counsel	Frank Waltheim
Orchestra Secretary	Nancy Osterholm
Narrator and Tapes	Jack Wanger
Staff Writer	Francis Lide
Travel Coordinator for Pan American Airlines	Douglas Cox
Travel Coordinator for Eastern Airlines	Fred Kuri
Travel Coordinator for Greyhound Lines	Frank Korenich, Jr. in New York Charles Shank in Washington D.C.

Travel Coordinator for Walt Disney World	Robert MacKinnon, Jr.
Coordinators for U.S. State Department International Orchestras	L.Arthur Minnick Dr. Martin Carroll
Coordinator for American Federation of Musicians	Ted Dreher
Invitation/Ticket Chairman for Kennedy Center	Tommie Wilck
Hospitality Presentations Coordinator	William Long
Decorations at Walt Disney World	Fred Rogers
Photo Coordination at Walt Disney World	William Spidle
Music Preparation	Ted Tracy
Ushering	Tom Garrison Valerie Watson
 <u>Champagne Reception</u>	
Champagne/Tables/Waiters	Dave Vermeulen
Entertainment	Bob Cross
Wardrobe	Tom Pierce
Decorations	Fred Rogers
Operations	Tom Garrison
Interdivision Coordination	Fred Brooks

COMMITTEE ASSIGNMENTSMISS WINDSOR COMMITTEE

Invitation Design	Bob Moore Norm Neceti Bill Philbrook
Invitation/Credential Coordination	Estelle Bowker Judy Clements Kay Mulvey Lee Mimms Jim Stewart
Organizational Procedures	Lee Mimms
Hostess/Host Orientation	Valorie Watson Fred Duffy Thor Deglemann
Tour Guides	Tom Garrison
Transportation	Bob MacKinnon, Jr.
Hospitality Gifts	Bill Long
Eastern Airlines Transportation Coordination	Rau Nau Jane Hatfield Fred Cherney Fred Kuri
Lodging	John Curry Jack Sayers Jack Lindquist Alan Hubsch Clayne Dice
Company Travel Arrangements	Donna Whitney
Printing	Jim Clay
McCoy Airport Reception	Dick Gossip John F. Meacham
Press Relations	Sandy Quinn Charlie Ridgeway
Budget	Hugh Stewart

DAY 2Private Reception - Polynesian Hotel

Refreshments

Clayne Dice
Jim Hunt
Ben Harris

Celebrity Hostesses

Fred Duffy
Thor Degelmann
Val Watson

Tour Guides

Tom Garrison

Operations

Tom Garrison

Contemporary Hotel Reception and Lakeside Buffet

Special Platform Coordination

Fred Brooks
Bill Blanton

Platform Decoration

Fred Rogers

Celebrity Hostesses

Fred Duffy
Thor Degelmann
Val Watson

Press Coordination

Sandy Quinn
Charlie Ridgeway

Photo Coordination

William Spdle

Hotel Operations

Allen Hubsch
Ben Harris

Operations

Tom Garrison

Food

Allen Hubsch
Hans Eckert
Ben Harris

Entertainment

Bob Cross

Special Speech Writing

Bob White

Polynesian Luau

Entertainment Coordinator

Forrest Bahruth

Food and Beverage

Clayne Dice
Jim Hunt
Ben Harris

Decorations	Fred Rogers
Wardrobe	Tom Pierce
Staging	Forrest Bahruth Elana Lescard
Press Coordination	Sandy Quinn Charlie Ridgeway
Photo Coordination	William Spidle
Stage Manager	Ray Ramsey
Rafts	Tom Garrison
Technical Services	Bill Blanton Bill Young
Narration and Tapes	Jack Wagner
Atmosphere Talent	Bob Cross

Electrical Water Pageant and Fantasy-in-the-Sky Spectacular

Electrical Pageant	Bill Blanton Ron Miziker Tom Craven
Art Director	Mark Davis
Preliminary Concept Designs	Kenneth Dresser
Goodyear Blimp	Bob Lane
Fireworks Show	Bernie Wells Roy Cantrucci Tom Craven
Searchlights	Bill Blanton
Safety	Bruce Siriani
Fire Department Operations Coordinator	Tom Garrison
Background Music Tapes	Jack Wagner
Pyrotechnician	Mickey Aronson

DAY 3Dedication Ceremonies - Main StreetGeneral

Inter-division Coordination	Fred Brooks
Operations	Tom Garrison
Television Coordination	Ron Miziker
Technical Setup	Bill Blanton Bill Young Tom Craven
Decorations	Emile Kuri Fred Rogers
Hostess (Celebrity)	Thor Degelmann Fred Duffy Val Watson
Sound	Bill Blanton
Press	Sandy Quinn Charlie Ridgeway
Photographs	William Spidle
Communications	Bruce Siriani
Transportation	Tom Garrison
Animals and Birds	Mills Lord
Balloons	Nat Lewis
Narration and Tapes	Jack Wanger
Casting	Forrest Bahruth Gene Rowell
Box Lunches	Dave Vermeulen John MacDowell
First Aid	Roger Ward
Security	Greg Weeks
Budget	Hugh Stewart
Music Preparation	Ted Tracy

PARADE PRODUCTION STAFF

Parade Coordinators	Del Shilling Alex Golstab
Parade Choreographers	Forrest Bahruth Marita Orr Barnette Ricci
Technical Coordinator	Bill Blanton
Physical Coordinators	Lee Pharr Bill Young Ann Lloyd
Music Coordinator	Pete Lofthouse Jim Martin
Narrative Coordinator	Jack Wagner
Wardrobe	Tom Pierce Orpha Harryman Tom Linville
Design and Character Costume WED	Bill Justice
Division #1 - Captain - Assistant Captain	Bill Anoka Reid Williams
Division #2 - Captain - Assistant Captain	Gerry Dallesandro Mike Legendre
Division #4 - Captain - Assistant Captain	Ken Lawson Tom Little
Division #5 - Captain - Assistant Captain	Bill Pitts
Division #6 - Captain - Assistant Captain	George Carroll Lannie Patton
Division #7 - Captain - Assistant Captain	Dave Crotty
Vehicle Drivers Leadman	
Prop Aides	Orlando Ferrante and Staff Eric Weston
Park Musicians	Bob Cross
Parade Decorations	Fred Rogers

Parade Food Services

Dave Vermeulen
John McDowell

Parade Livestock and Drivers

Owen Pope

Dance Assistants

Shel Bryant
Santdra Young
Charles Blumhard
Elyn Wolkin
Lannie Patton
Jeff Nolle
Cathy Coburn
Sally Gage
Marie Bahruth
Ari Bloustein
Sylvian Didier

Music Writing

A. Parade Specialty Music

Sonny Anderson
Pete Lofthouse
Jim Christensen
Bob Cross

B. Symphonic Band and Chorus

1. "Overture"
2. "When You Wish Upon A Star"

Jim Christensen
Buddy Baker
Jack Coleman

C. 1,076 Piece Band

1. "76 Trombones"
2. "Star Spangled Banner"

Jim Christensen
Jim Christensen

Music Procurement

Jimmy Johnson

PRODUCTION NUMBER STAFF

Overall Coordinators

Marita Orr
Barnette Ricci

Choreographers

Onna White
Marty Allen
Marita Orr
Barnette Ricci

Narration

Jack Wagner

Technical Services

Bill Blanton

Casting

Forrest Bahruth
Gene Rowell

Transportation

Tom Garrison
Bob MacKinnon, Jr.

Coordinators

Town Square
Block 1
Block 2
Block 3
Hub

Gene Rowell
Stu Sax
Bill Royal

Bob Boemler

Antique Autos

Gene Rowell
Bob Boemler

Barbershop Quartets

Bob Boemler

Dance Assistants

Team 1

Marie Bahruth
(instructor)
Charles Blumhard
Shel Bryant

Team 2

Forrest Bahruth
(instructor)
Cathy Coburn
Sylvia Didier
Sandra Young

Team 3

Barnette Ricci
(instructor)
Robert Warren
Janet Ruthven
Pam Madden

Team 4

Marita Orr
(instructor)
Lannie Patton
Sally Gage
Terry Eastman

Team 5

Ari Bloustein
(instructor)
Jeff Nolle
Debra Bowlin
Stephanie McKeen

Team 6

Elyn Wolkind
(instructor)
Bob Shirtzer
Nina Cameron

Musical Sketch and Routine

Peter Howard

Orchestration and Recording Conductor
(Prerecorded at Walt Disney Studio)

Irwin Kostal

CHORUS STAFF

Coordinators

Sheldon Disrud
Del Shilling

Guest Conductor

Dr. Charles Hirt

1,076 PIECE BAND STAFF

Overall Coordinators

Dick Bain
Jim Christensen

Guest Conductor

Meredith Willson

Assistant Conductors

Colonel Samuel Loboda
(Train Station)

Gazebo 1
Gazebo 2
Gazebo 3
Gazebo 4

E.W. Williams
James Wilson
Del Kieffner
Mark Casey

Drill Master

George Carroll

II. DAY THREE PRODUCTION ANALYSIS

OVERTURE		1602
OPENING FANFARE		24
DEDICATION CEREMONY		6
OLD FASHIONED MAIN STREET PRODUCTION NUMBER		440
GRAND PARADE		
DIVISION I	116	
DIVISION II	140	
DIVISION III	65	
DIVISION IV	76	
DIVISION V	72	
DIVISION VI	84	
DIVISION VII	50	
FINALE	1265	
	<hr/>	
	1868	1868
		<hr/>
GRAND TOTAL OF PARTICIPANTS		3940

OVERTURE

ANALYSIS

UNIT	TALENT PERSONNEL	WARDROBE	WARDROBE LOCATION	PROPS
1100 Voice Ramp Chorus	1100	Personal, short-sleeve white shirts	NA	
		and blouses with open collars and		
		dark slacks/skirts		
400 voice stage chorus	400	Personal - same as above except	WDW	
		all men to wear Main Street blazers		
		with ties.		
University of Florida	100	Personal -- blue blazers		
Symphonic Band				
Richard Bowles, Director	1	Special		
Dr. Charles C. Hirt	1	Special		
Guest Conductor				

ANALYSIS

$$D = 1\frac{1}{4}$$

DEDICATION CEREMONY

ANALYSIS

$D = 1.5$

OLD FASHIONED MAIN STREET PRODUCTION NUMBER

ANALYSIS

UNIT	TALENT PERSONNEL	WARDROBE	WARDROBE LOCATION	PROPS
ANTIQUE AUTOS				25 Antique Autos
I 1A Drivers	25	To provide duster, goggles and cars to each driver	WDW	
Guests	25	Personal - dressed in period style		
II Q1 Twelve Barber-shop Quartets	48	Personal - to provide strawhats	WDW	
III A Antique Bicycles	6 males 5 female	Personal		8 Antique Bicycles
III B Tandem Bicycles	22 males 22 female	Ice Cream costumes, white with yellow trim.	D/L	22 on loan from WDW Recreation Dept.
IV A Keystone Kops	52 males	Keystone Kop Uniform w/billy clubs	WDW	Billy Clubs
IV B Hub Park Girls	24 females	Yellow Dress	D/L	Parasols
Town Square couples	24 males	Ice Cream Parlor Fountain Man		
IV C Dancing Groups	24 females	Ice Cream Parlor	WDW	TBD
	24 males	Main Street Merchandising		
IV D Block One Couples	24 females	Main Street Merchandising	WDW	TBD
	24 males	Coke Corner - Main Street		
IV E Block Two Couples	24 females	Coke Corner - Main Street	WDW	TBD
	24 males	Coffee Shop - Main St. bus boy		
IV F Block Three Couples	24 females	Coffee Shop - Main Street	WDW	TBD
V A Suffragettes	16 females	Suffragette outfit with red, white and blue sashes	D/L	Placards with special copy
V B 1910 Rolls-Royce				Decorated with Suffragette theme
Driver-owner	1 male	Chauffeur attire	WDW	
Grand Dowager	1 male	appropriate wardrobe	WDW	Suffragette props and live English bulldog
V C Suffragette Lady	1 female (heavy set)	Suffragette costume	WDW	Bass Drum, strap & beater w/ special head copy.
				D-16

GRAND PARADE DIVISION I

ANALYSIS

UNIT	TALENT PERSONNEL	WARDROBE	WARDROBE LOCATION	PROPS
TITLE UNIT				
Fanfare Trumpets	8 males	D/L Winter Band White Unifors	D/L	Fanfare Trumpets with banners
WDW Marching Band	21	New - Band Director Style	WDW	"
Big Bass Drum				Big Bass Drum pulled by 6 ponies
WDW Ambassador	1	Ambassador outfit	WDW	
Driver	1	Band uniform *	WDW	
Driver Assistant	1 female	Tour Guide outfit	WDW	
Mickey Mouse #2	1 male	Mickey Mouse #2 costume	WDW	
DISNEY CHARACTER UNIT				
Disney Characters	30	(see parade lineup for details)	WDW-D/L	
Pearly Band	6 male music. 1 female Music.	Pearly Band costume	WDW	1 Kadiddlehopper
Disney Characters	30	(see parade lineup for details)		
Horsemen	16 males		D/L	Fantasy On Parade Horsemen from D/L

ANALYSIS

D-18

DIVISION II - Continued

ANALYSIS

UNIT	TALENT PERSONNEL	WARDROBE	WARDROBE LOCATION	PROPS
FANTASYLAND UNIT				
1 College Age Pullers	12 males 12 females	Fantasyland Candymaker Fantasyland Candy Shop	WDW	
2				Wagon with 2 soldiers
4				Wagon with 1 soldier
6				Wagon with 1 soldier
7 Driver	1 male	NA		Battleship with dingy
9				Medieval Knight
11				Medieval Knight
13				Medieval Knight
14 Herald Trumpets	24 males	Toy Soldier (Fantasy On Parade)		24 Herald Trumpets
38 Flap Jack Drums	20 males	Toy Soldier (Fantasy On Parade)		Flap Jack Drums
58 Field Drums	2 males	Toy Soldier (Fantasy On Parade)		Field Drums
57 Cymbals	2 males	Toy Soldier (Fantasy On Parade)		2 pair cymbals
63				Soldiers on horse
65				French Soldier
67				4 soldiers
69				Wagon with 1 sol- dier
71				"

DIVISION II - Continued

ANALYSIS

[illegible]

DIVISION III

ANALYSIS

UNIT	TALENT PERSONNEL	WARDROBE	WARDROBE LOCATION	PROPS
ADVENTURELAND UNIT				
1 Prop carrier	1 male	Tiki Theatre Sunshine Tree	WDW	1 umbrella
2 Primitive Dancers	4 female	to be made (see sketch K-1 by F. Clotier)	WDW	
6,7 Prop Carrier	2 males	Tiki Theatre Sunshine Tree	WDW	6,7 Large Bird
8 Oriental Dancers	5 females	Adventureland Veranda Juice Bar	WDW	Fans
13 Prop Carrier	1 male	Adventureland Jungle River	WDW	13 Birdcage
14 Tiki Hut Carrier	8 males	Adventureland Jungle River	WDW	
18 Tahitian Dancers	6 female	Unit wardrobe from Polynesian Revue	WDW	
24 Disney Characters	5 males	Mowgli, Baloo, King Louie, Col. Hathi	WDW	
32 Prop Carrier	1 male	Adventureland Jungle River	WDW	33 Birdcage
33 Female Dancers	3 females	Merchandising - Adventureland	WDW	
36 Prop Carrier	1 male	Tiki Theatre Sunshine Tree	WDW	36 Sunface
37 Prop Carrier	1 male	Tiki Theatre Sunshine Tree	WDW	37 Fruit basket

DIVISION III - Continued

ANALYSIS

D-22

ANALYSIS

D-23

DIVISION V

ANALYSIS

UNIT	TALENT PERSONNEL	WARDROBE	WARDROBE LOCATION	PROPS
FRONTIERLAND UNIT				
1-3 Disney Characters	3 males	see parade lineup	WDW	
4-10 Los Gallos	7 males	personal		
11-13 Livestock Assist.	3 males	Frontierland Shooting Gallery	WDW	
14-16 Livestock Drivers	3 males	Frontierland Shooting Gallery	WDW	
17-22 Diamond Horseshoe	6 principals	Wardrobe as per Show requirements	WDW	
23-26 Diamond Horseshoe Dancers	4 females	Show Wardrobe	"	
27 Mile Long Bar Princ.	1 female	Show Wardrobe	"	
28-35 Mile Long Bar Girls	8 females	Waitress - Mile Long Bar	"	
36 Mile Long Bar Musician	1 musician	Show wardrobe	"	
37-40 Blue Grass musicians	4	Personal Wardrobe	NA	
41-72 Western Dancers	16 males 16 females	Bear Band Theatre and refreshments (see picture-parade lineup)	WDW	

DIVISION VI

ANALYSIS

UNIT	TALENT PERSONNEL	WARDROBE	WARDROBE LOCATION	PROPS
LIBERTY SQUARE				
1 Flag Carrier	1 male	Liberty Square Security	WDW	Flag of 13 colonies on pole with harness
2 Rocket Pusher	3 males	Liberty Square Security	"	N-2 Rockets (2)
5 Parade Aides	4 males 4 females	Liberty Square Fife and Drum Corps Hall of Presidents - Liberty Square	"	N-5 Bunting (2)
9 George Carroll	1 male	Fife and Drum	"	
10 Canape Pushers	8 males	Fife and Drum	"	
18 Fife Players	12 males	Fife and Drum	"	
30 Field Drums	4 males	Fife and Drum	"	
34 Bass Drum	1 male	Fife and Drum	"	
35 Townspeople	9 female	Liberty Square Tavern Costume/Food	"	
42 Townspeople	9 female	Liberty Square Merchandising	"	
53 Town Crier/ Bill of Rights	1 male	special	"	53 town crier Pod
54 Town Crier Pusher	1 male	Fife and Drum Wardrobe	"	
55 Town Crier/ Declaration of Independence	1 male	Special	"	55 Town Crier Pod
56 Town Crier Pusher	1 male	Fife & Drum Wardrobe	"	
57 Ben Franklin	1 male	special	"	57 Ben Franklin Pod
58 Ben Franklin Pusher	1 male	Fife & Drum	"	

DIVISION VI - Continued

ANALYSIS

[illegible]

DIVISION VII

ANALYSIS

[illegible]

GRAND REHEARSAL SCHEDULE
(Revised 9/10/71)

OCTOBER 2 - DAY I

PARADE REHEARSAL - Dancers Only

	7:00	8:00	9:00	10:00	11:00	12:00	1:00	2:00	3:00	4:00	5:00	6:00	7:00
a. Marching Horsemen				Rehearsal			X	Lunch & Wardrobe					
b. Tomorrowland Unit- Rock Dancers				Rehearsal			X	Lunch & Wardrobe					
c. Fantasyland Unit				Rehearsal			X	Lunch & Wardrobe					
d. Fantasia Unit - Hippos, Alligators, Ostriches, Mushrooms				Rehearsal			X	Lunch & Wardrobe					
e. Adventureland Unit - Primitive & Oriental Dancers				Rehearsal			X	Lunch & Wardrobe					
f. Calypso Unit - Caribbean Dancers						Wardrobe & Lunch	X	Rehearsal					
g. Small World Unit - Folk Dancers						Wardrobe & Lunch	X	Rehearsal					
h. Frontierland Unit - Western Dancers						Wardrobe & Lunch	X	Rehearsal					
i. Liberty Square - Townpeople						Wardrobe & Lunch	X	Rehearsal					

PARADE CHARACTERS
Part-time Park Characters
(see attached schedule)

OCTOBER 3

Team 1 - Hub Park Girls

Team 2 - Town Square Couples

Team 3 - Block Couples

Team 4 - Block Couples

Team 5 - Hub & Town Square Cops

Team 6 - Block Cops (24) &
Center Street Cops (4)

OCTOBER 4

PARADE CHARACTERS
Full-time Park Characters
(see attached schedule)

[illegible]

GRAND REHEARSAL SCHEDULE
(Revised 9/10/71)

OCTOBER 9 - (DAY II)

PARADE REHEARSAL - All Dancers,
Carriers & Pushers
(Wardrobe When Possible)

- a. Marching Horsemen
- b. Tomorrowland Unit
- c. Fantasyland Unit
- d. Fantasia Unit
- e. Adventureland Unit
- f. Calypso Unit
- g. Small World Unit
- h. Frontierland Unit
- i. Liberty Square

PARADE CHARACTERS
Part-time Park Characters
(see attached schedule)

7:00	8:00	9:00	10:00	11:00	12:00	1:00	2:00	3:00	4:00	5:00	6:00	7:00	8:00
			Rehearsal		LUNCH			Rehearsal					
			Rehearsal		LUNCH			Rehearsal					
			Rehearsal		LUNCH			Rehearsal					
			Rehearsal		LUNCH			Rehearsal					
			Rehearsal		LUNCH			Rehearsal					
			Rehearsal		LUNCH			Rehearsal					
			Rehearsal		LUNCH			Rehearsal					
				Rehearsal		LUNCH		Rehearsal					
				Rehearsal		LUNCH		Rehearsal					
				Rehearsal		LUNCH		Rehearsal					

GRAND REHEARSAL SCHEDULE
(Revised 9/10/71)

OCTOBER 10

PRODUCTION REHEARSAL - DAY II

Team 1 - Hub Park Girls

Team 2 - Town Square Couples

Team 3 - Block Couples

Team 4 - Block Couples

Team 5 - Block Couples

Team 6 - Block Cops (24) &
Center Street Cops (4)

OCTOBER 11

PARADE CHARACTERS

Full-time Park Characters
(see attached schedule)

[illegible]

GRAND REHEARSAL SCHEDULE
(Revised 9/10/71)

OCTOBER 23 (DAY IV)

Full Parade Rehearsal - All Units
(6:30 AM Call)

OCTOBER 24 -(DAY IV)

Antique Cars

Barbershop Quartets

Full Production Number Rehearsal

Luau Rehearsal & Performance Time

OCTOBER 25

1,076 Piece Band

Chorus & Concert Band

Parade

Production Number

Antique Cars

Quartets

	7:00	8:00	9:00	10:00	11:00	12:00	1:00	2:00	3:00	4:00	5:00	6:00	7:00	8:00	9:00	10:00	11:00
Full Parade Rehearsal - All Units (6:30 AM Call)	Main St.																
Antique Cars									Inspection	Rehearse	*****	Rehearse					
Barbershop Quartets									Rehearse		****	Main Street					
Full Production Number Rehearsal												Ass- emble	Main Street				
Luau Rehearsal & Performance Time					Rehearsal								Performance				
1,076 Piece Band	Form Main Str.			Castle	Form	Show											
Chorus & Concert Band	Rehearsal			Castle	Form	Show											
Parade	Wardrobe & Lunch			Form	Show												
Production Number	Wardrobe & Lunch			Form	Show												
Antique Cars	same as Production Number																
Quartets	Same as Production Number																

***** Lunch

GRAND OPENING PARADECharacter DepartmentSaturday Rehearsals
(Part Time Employees)

Mickey #3 (Castle)
Pluto
Goofy

Winnie the Pooh
Eeyore
Tigger
Yellow Rabbit
Owl
Kanga
Heffalump
Heffalump

Mowgli
Baloo
King Louie
Col. Hathi

Gus Gus
Jacques

Flower
Thumper

Alice
White Rabbit
Mad Hatter
Walrus
Little King
Tweedle Dee
Tweedle Dum

Wolf
Fiddler Pig
Fifer Pig
Practical Pig

Pinocchio
Gideon
Foulfellow
Geppetto

Br'er Bear
Br'er Fox
Br'er Rabbit

Snow White
Doc
Grumpy
Sleepy
Happy
Sneezy
Bashful
Dopey

Peter Pan
Capt. Hook
Mr. Smee
Crocodile

Chip
Dale

Scat Cat
Hip Cat
Giuseppi Cat

Monday Rehearsals
(Full Time Employees)

Mickey #2 (Bass
Drum)

Minnie
Donald
Mushroom
Dumbo
Mushroom
Mushroom
Alligator
Penguin
Hippo
Hippo
Mushroom
Penguin
Hippo
Hippo
Alligator
Alligator
Alligator
Jose Carioca
Panchito

REHEARSAL ASSIGNMENT BREAKDOWN
OLD-FASHIONED MAIN STREET PRODUCTION NUMBER

DAY 1 - OCTOBER 3

9:00 AM - 1:00 PM

Team 1 - Hub Park Girls - Sections 1 & 2
Team 2 - Town Square Couples - Sections 1 & 2
Teams 3 & 4 - Block Couples - Sections 1 & 2
Team 5 - Hub & Town Square Keystone Cops - Sections 1 & 4
Team 6 - Block Keystone Cops - Sections 1 & 4

2:00 PM - 6:00 PM

Team 1 - Hub Park Girls & Hub Cops - Section 3
Team 2 - Town Square Couples - Section 3
Teams 3 & 4 - Block Couples - Section 3
Teams 5 & 6 - All other Keystone Cops - Review Sections 1 & 4

DAY II - OCTOBER 10

9:00 AM - 1:00 PM

Team 1 - Hub Park Girls - Section 4
Team 2 - Town Square Couples - Section 4
Teams 3 & 4 - Block Couples - Section 4
Team 5 - Hub & Town Square Keystone Cops - Review Section 4
Team 6 - Block Keystone Cops - Review Section 4

2:00 PM - 6:00 PM

Team 1 - Hub Park Girls & Hub Cops - Section 5
Teams 2 & 5 - Town Square Couples & Cops - Section 5
Teams 3, 4, & 6 - Block Couples & Cops - Section 5

DAY III - OCTOBER 17

9:00 AM - 1:00 PM

Team 1 - Hub Park Girls & Hub Cops Put together and
Teams 2 & 5 - Town Square Couples - review number with
Teams 3,4, & 6 - Block Couples & Cops entrance & exits.

2:00 PM - 6:00 PM

Teams 1 - 6 - same areas - rehearse entire number

6:00 PM - 8:00 PM

Team 1 - 16 - Suffragettes
Teams 2, 3, & 4 - Rehearsal vehicles with Driver's Assistants
(Rehearse entire number)
Teams 5 & 6 - Bicycles and riders

REHEARSAL ASSIGNMENT BREAKDOWN
WALT DISNEY WORLD ON PARADE

DAY I - OCTOBER 2, 1971

(Dancers)

"Tomorrowland Unit"
"Zippidy Doo Da Rock"
9:00 AM - 1:00 PM
Rock Number - Elyn Wolkind

"Fantasyland Unit"
9:00 AM - 1:00 PM
Hippos - Lannie Patton
Alligators - Jeff Nolle
Ostriches - Cathy Coburn
Mushrooms - Sally Gage

"Adventureland Unit"
9:00 AM - 1:00 PM
4 female primitive - Marie Bahruth
5 female oriental - Ari Bloustein

2:00 PM - 6:00 PM
14 Caribbean dancers - Elyn Wolkind

"Small World Unit"
2:00 PM - 6:00 PM
13 folk dancers (female) - Marie Bahruth
13 folk dancers (male) - Jeff Nolle

"Frontierland Unit"
2:00 PM - 6:00 PM
20 Western girl dancers - Sally Gage
20 Western boy dancers - Lannie Patton

"Liberty Square Unit"
2:00 PM - 6:00 PM
20 Townspeople girls - Cathy Coburn
20 Townspeople boys - Ari Bloustein

DAY II - OCTOBER 9, 1971

(Dance Clean-Up)

"Tomorrowland Unit"
9:00 AM - 12:00 NOON
Rock dancers - Elyn Wolkind

"Fantasyland Unit"9:00 AM - 12:00 NOON

Hippos - Sally Gage
 Alligators - Sally Gage
 Ostriches - Sally Gage
 Mushrooms - Sally Gage

"Adventureland Unit"9:00 AM - 12:00 NOON

4 female primitive - Marie Bahruth
 5 female oriental - Marie Bahruth
 14 Caribbean dancers - Marie Bahruth

"Small World Unit"10:00 AM - 1:00 PM

13 female folk dancers - Jeff Nolle
 13 male folk dancers - Jeff Nolle

"Frontierland Unit"10:00 AM - 1:00 PM

20 Western girl dancers - Lannie Patton
 20 Western boy dancers - Lannie Patton

"Liberty Square Unit"10:00 AM - 1:00 PM

40 Townspeople - Ari Bloustein

DAY II - OCTOBER 9, 1971All Vehicles & All Pushers & Carriers

(Must go to wardrobe sometime today.)

9:00 AM - 12:00 NOON

Tomorrowland Unit
 Fantasyland Unit
 Adventureland Unit

10:00 AM - 1:00 PM

Small World Unit
 Frontierland Unit
 Liberty Square Unit

Forrest Bahruth & Marita Orr

Cathy Coburn - Sylvian Didier - Debra Fasting
 (Put together vehicles, pushers & dancers in units.)

2:00 PM - 5:00 PM (Put everything together and rehearse.)

Tomorrowland Unit - Elyn Wolkind
 Fantasyland Unit - Sally Gage - Cathy Coburn
 Adventureland Unit - Marie Bahruth

3:00 PM - 6:00 PM

Small World Unit - Jeff Nolle
Frontierland Unit - Lannie Patton
Liberty Square Unit - Ari Bloustein

DAY III - OCTOBER 16, 1971 - DRESS REHEARSAL

(Musicians in on afternoon of 16th)

9:00 AM - 6:00 PM

Entire Divisional Rehearsal

DAY IV - OCTOBER 23, 1971

7:00 AM - 10:00 AM

Parade Rehearsal - Entire Cast

NOTE:

All props needed for every rehearsal.

3:00 PM - 6:00 PM

Small World Unit - Jeff Nolle

Frontierland Unit - Lannie Patton

Liberty Square Unit - Ari Bloustein

DAY III - OCTOBER 16, 1971 - DRESS REHEARSAL

(Musicians in on afternoon of 16th)

9:00 AM - 6:00 PM

Entire Divisional Rehearsal

DAY IV - OCTOBER 23, 1971

7:00 AM - 10:00 AM

Parade Rehearsal - Entire Cast

NOTE:

All props needed for every rehearsal.