

WED MAPO

imaginews

December 3, 1982



HORIZONS

Walt Disney promised that EPCOT Center would "always be in a state of becoming". So what's new for Phase II? "Horizons", of course, presented by General Electric. Situated between "Universe of Energy" and "World of Motion" in Future World, the "Horizons" is well on its way to an October 1, 1983 opening.

Within the uniquely-shaped, multi-level themed attraction, guests will travel through many wondrous worlds of tomorrow.

In the FuturePort, a transportation complex of the 21st Century, guests will board a continuously-moving train of 4-passenger vehicles.

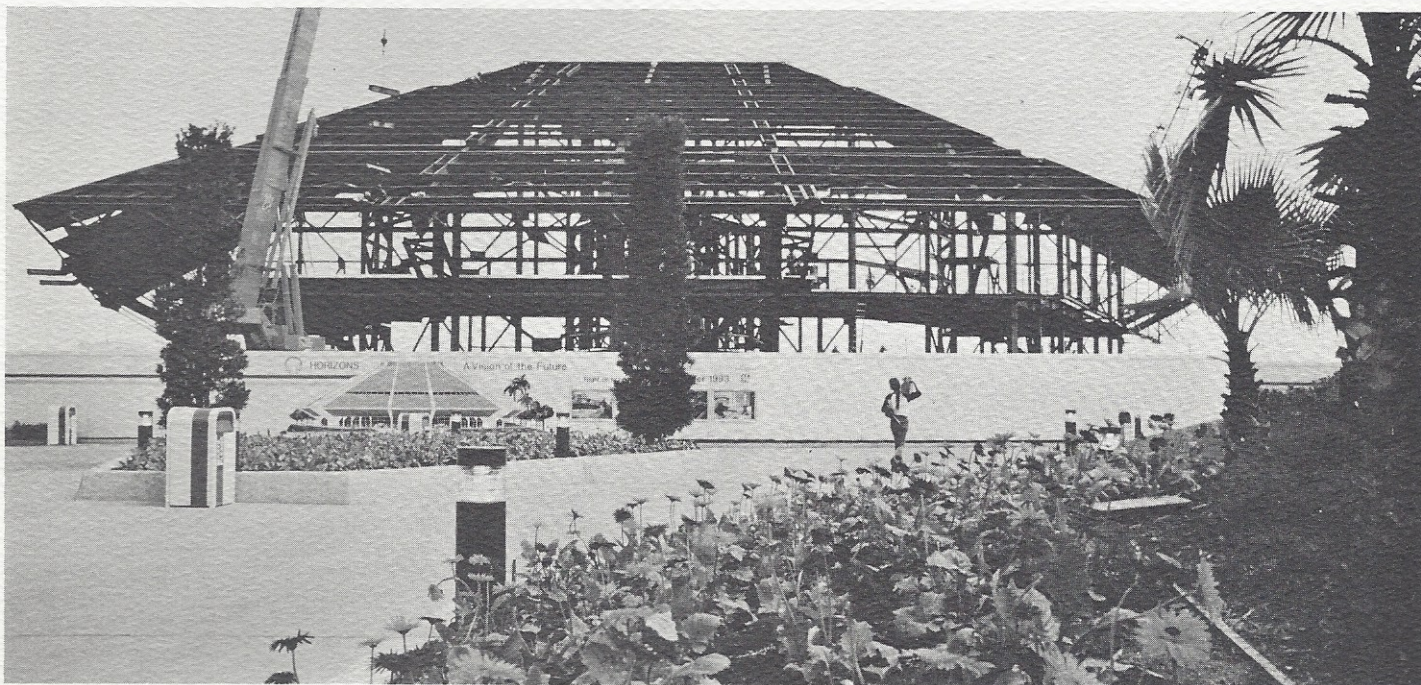
The journey begins with "Looking Back at Tomorrow", a whimsical recollection of futures past. Guests will glide by Jules Verne on his way to the moon ... drop in to an apartment of the 1930s to witness those mechanical robots that were going to make household work obsolete ... recall famous futures of film and television screens and much more.

Next it's on to "Omni-Sphere", to experience the real-world discoveries of science and technology ... discoveries that will unlock the doors to *our* tomorrows. The images of this unique film presentation will be projected on two hemispherical screens, each measuring nearly 80 feet in diameter!

From "Omni-Sphere" it's just a quick jog to "Tomorrow's Windows", where visitors will explore several communities of tomorrow. Three-dimensional scenes, featuring a cast of Audio-Animatronics characters, will depict future living in an urban complex, desert farm/home, floating city and a space colony.

As a finale to "Horizons", guests will be treated to a Disney first ... the chance to choose their own ending to a ride-through experience. Touch-sensitive panels in the vehicles will allow each passenger to select one of three possible endings to the show (a computer will tally the vote). Each ending features a different 30-second high-speed simulation based on transportation systems featured in scenes just visited.

"Horizons" is designed to create an optimistic, dynamic vision of what the future *can* be. As the ride vehicles glide toward the unload concourse, guests are reminded that the journey to the future never really ends ... there's always another bright tomorrow on the horizon.

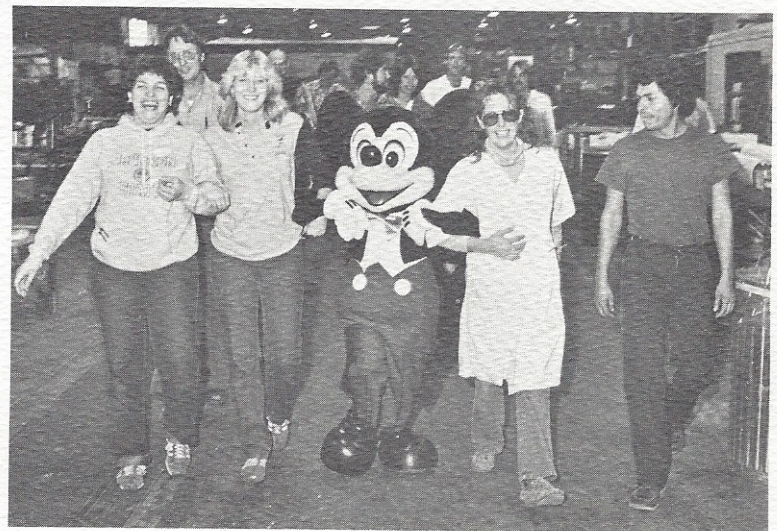
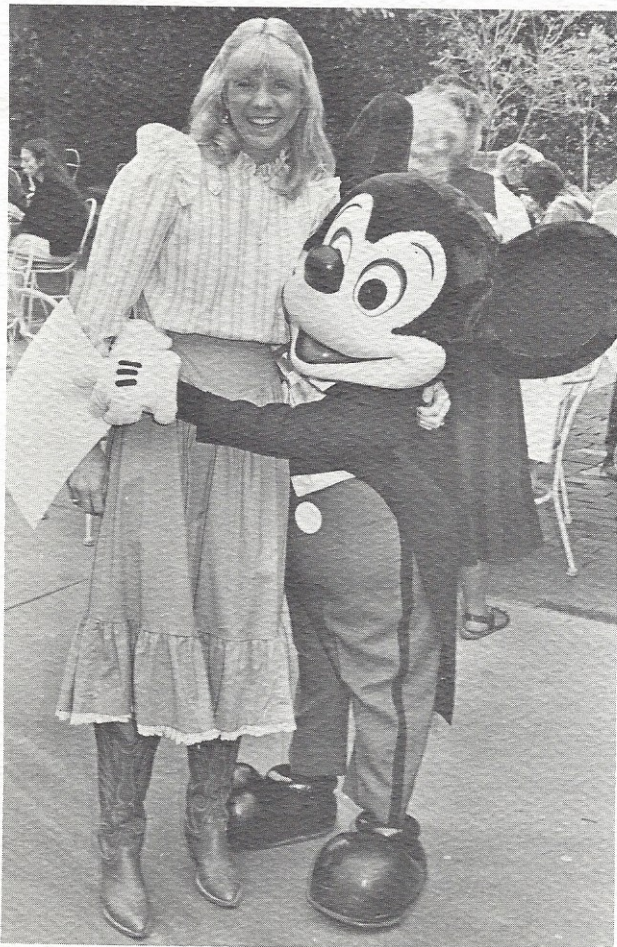


This photograph of EPCOT Center's newest themed attraction, "Horizons", was taken last October 1. Construction is coming along rapidly. Since the time of this photograph, the roof of the building has been completed.



Mickey Has A Birthday!

On November 18, 1982, Mickey Mouse was 54 years old. The world's most famous mouse began his career at the Colony Theatre in New York when he starred as "Steamboat Willie" in history's first animated film with sound. In honor of this special occasion, Minnie Mouse hosted a birthday celebration for Mickey at WED & MAPO. Everyone was invited to join Mickey and Minnie for a piece of Mickey's birthday cake!



"It Takes People"

As the plane gently touched down on the runway at the New Zealand airport, Raellen Lescault could see a large crowd milling around outside. The people waved and shouted excitedly as the plane taxied and finally came to a complete stop. And when a smiling Raellen and her companions disembarked from the plane, the crowd went wild.

"Disney! Disney!" Hands reached out as the people pressed forward. "Someday I want to go to Disneyland", someone yelled. "Tell me what Disneyland is like", said another.

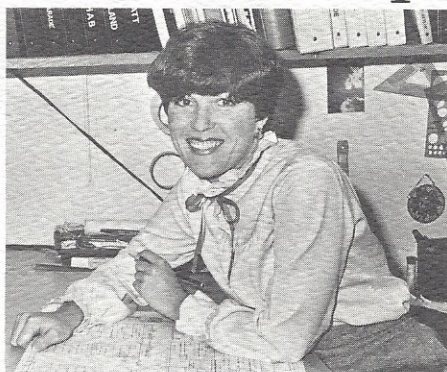
It was Raellen's first trip abroad as the new Disneyland Ambassador and she will never forget that crowd's excitement.

"It didn't matter who I was, I was from Disneyland", Raellen remembers.

Later Raellen was to learn that more people had come to that airport in New Zealand to see herself and her Disneyland character escorts than had previously turned out to greet the Queen of England.

As a child growing up in Anaheim, Raellen always felt very close to Disneyland. It is not surprising that she would end up working at the Park one day.

As a youngster, Raellen wanted more than anything to be one of the tour



Raellen Lescault

guides in the theme park. Instead, she landed her first job in the merchandising area on Main Street. After three years, she graduated to guest relations where she worked as a tour guide.

During her years at Disneyland, Raellen studied architecture. Four years ago, she came to WED & MAPO.

"I'm the kind of person who likes to try new things, to explore new areas ... I've always wanted to work at WED", she says.

Raellen started out four years ago in Show Set Design incorporating her architectural background and all those years at Disneyland.

After three years in Show Set Design - "I learned as much as I could about how to put a show together. 'I'm still learning!' - Raellen moved into conceptual design in Creative Development. She was one of a team that helped launch The New Fantasyland.

"Each person cared, put that extra touch to it", she says with a smile.

Raellen described a visit to the Tower of London as a turning point for her in her involvement with New Fantasyland. "Suddenly, I thought that is what Fantasyland should look like - an inspired village lost in time. Later on, as we were looking through Walt Disney's original drawings for Fantasyland, we realized that this was what Walt had intended all along. There was not enough funds back when Disneyland first opened to create the village Walt envisioned. We're doing that now".

And what lies ahead for Raellen?

"My primary goal is to design for Disneyland", she says. "I've seen all those happy faces of the people as they walk into Fantasyland. Disneyland reaffirms their hopes and dreams - their belief in themselves. We've got to keep the magic!"

Fantasyland Update



The Snow White exterior facade goes up.



Construction is progressing on The Village Inn.

Show installation has begun. The scenic backings and set pieces for Snow White are now being installed. Show production efforts for Snow White are also being completed.

The support area for merchandise, food preparation/kitchen and electronic equipment for all the Fantasyland shows is 90% complete. This area will be utilized in the next couple of weeks as a show installation headquarters.

Calendar of Events

Open Line

Q.: Why doesn't WED & MAPO have its own Accounts Payable?

A.: A study was done by our accounting department and it was decided that it was not cost effective to set up an accounts payable department separate from the Studio. Instead an emergency procedure was set up by our accounting department here at the Sonora building to deal with crucial needs when they become apparent.

Open Line is a program of communication for all employees of WED & MAPO. Use Open Line to ask questions, express opinions or comment on any situation needing attention. Just drop your letter in the company mail, or stop by the Imaginews office, Disney University. Although we can't print every question we receive, all letters to Open Line will be forwarded to the appropriate Division office for their review. Open Line does not necessarily reflect the opinions of Walt Disney Productions, WED & MAPO or this publication.

Family Night At Disneyland

FAMILY NIGHT AT DISNEYLAND will be Monday, December 6, and all Disney employees are invited to attend. This marks the 27th annual Disney Family Christmas Party. The hours will be from 5:00 p.m. until 11:00 p.m.

Walt Disney Productions will present "A Disney Christmas Gift" on Dec. 4, CBS-TV. The joy of the Yuletide season is captured in the magic of Disney animation. Highlighted will be scenes from Disney's classic animated feature films.

Vanpool Savings

Joining a vanpool can save you money, wear and tear on your car, and prevent traffic-nerves.

There is currently a vanpool from Disneyland to WED & MAPO that has a few spaces available for additional riders. If you are interested, contact Kathleen Nunez at extension 7617.

Reminders

The cafeteria is experiencing a considerable loss of plates, glasses and silverware and would like everyone to observe the take out rules.

When you are taking your breakfast or lunch out of the cafeteria or patio areas, please order the take out Styrofoam cups, paper plates and plastic utensils provided for this service.

While we appreciate those of you who return the china, glasses and silverware, those that do not return them are raising the cost of the cafeteria service for all of us. So please, everybody, observe the take out rules.

Thank you for your cooperation.

* * *

Complimentary admission medium and silver passes are not good for special parties at Disneyland or hard ticket events. The next special party coming up is the New Year's Eve party at Disneyland. Your complimentary admission medium and silver passes will not be good for this event.

Share Your Talents...

The Imaginews would like your contributions of articles, photographs, cartoons, poetry, and anything else that you would like to share in print.

Please send in care of the Imaginews - Disney University.

Did You Know?

On Tuesday, November 9, at a major press conference held on the Tokyo Disneyland site, it was announced that the Park will officially open to guests on April 15, 1983.

* * *

The Disney Channel recently obtained a pair of satellite transponders on Westar 5 through the Robert Wold Co. Inc. The Channel will use the transponders for a minimum of two years, with an option to remain on them for the life of the satellite. The deal brings Disney "protected" transponders, making us a preferred customer with guaranteed service even if our transponders malfunction. The start date for the Disney Channel is set for next April 11.

* * *

In the near future, the Walt Disney World monorail system will be expanded from EPCOT Center to the Walt Disney World Village at Lake Buena Vista, thus tying together all major guest areas within Disney property. Once construction begins, crews will erect 2.4 miles of double beamway and build a monorail station at the Village.

WED & MAPO IMAGINEWS
Vol. III, No. 23

Disney University, ext. 7627

Editor: Valerie Philbrick
Graphics & Typography: Cheryl Truss
Contributors:
Tom J. Fitzgerald
WED & MAPO Mail Room
Studio Print Shop
Special Services

The Imaginews is a bi-weekly publication.