

WALT DISNEY'S Executive Club Newsletter

VOL. 3 NO. 3

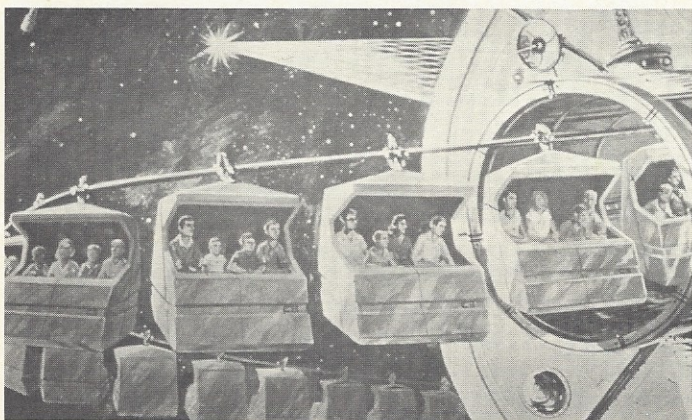
Exclusively For Executive Club Administrators

FALL 1983

New Future World Adventure Opens At Epcot Center

Horizons, a new Epcot Center Future World adventure opens this Fall in the Walt Disney World Vacation Kingdom in Florida.

Presented by General Electric, Horizons presents new technologies and possibilities for 21st century communities on land, under the sea, and in outer space. An exciting, new ride-through system carries guests through the giant trapezoid-shaped Horizons structure aboard four-passenger suspended vehicles.

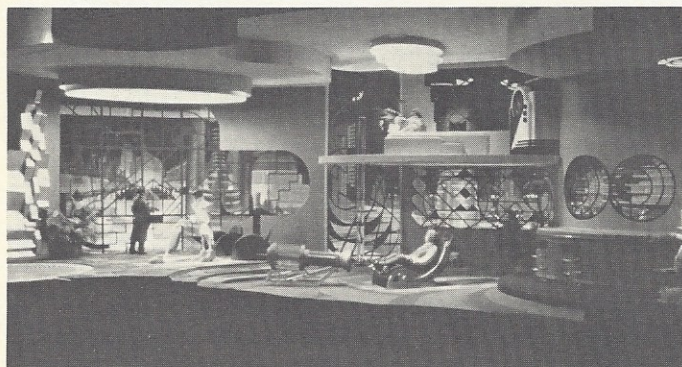


The 17-minute journey begins with "Looking Back at Tomorrow," a whimsical salute to the visionaries and science fiction seers from the past. Next, twin hemispheric motion picture screens surround the guests with spectacular science imagery.

Today's world leads to "Tomorrow's Windows," where three-dimensional settings, Audio-Animatronics figures and special effects combine to depict communities of the coming century.

"Nova Cite," an urban setting, is the first destination. Here, guests discover how advanced transportation and communication systems, such as magnetic levitation trains and holographic telephones, help keep the future family closer together.

In the "Mesa Verde" setting, guests glide by a farmer's home to catch a glimpse of a future where computers and "smart" appliances lend a helping hand with the daily chores.



"Sea Castle," a floating oceanic city spotlights the potential for underwater communities and "Brava Centuri" shows vacationers arriving in a recently completed space station.

On the return trip to Earth, guests are invited, via audience polling devices, to select their own ending to the journey. Visitors can choose from three high-speed adventures and race through environments portrayed in "Tomorrow's Windows."

As guests leave Horizons, they pass a 20 x 65 foot mural painted by Bob McCall, the celebrated space artist whose work is displayed in the Air and Space Museum in Washington, D.C.

Horizons is designed to accommodate 2500 guests per hour. It is the seventh major theme area in Future World. Epcot Center World Showcase includes nine international pavilions.

Both Epcot Center and the Magic Kingdom in Walt Disney World are open every day of the year with extended hours and extra entertainment during holiday and busier vacation seasons.

Operating hours this Fall are 9 a.m. to 6 p.m. in the Magic Kingdom and 9 a.m. to 8 p.m. in Epcot Center.



Hotel Happenings

California Style Accommodations At Howard Johnson's

Your Executive Club guests will enjoy every moment of their visit to Southern California when they stay at Howard Johnson's Motor Lodge in Anaheim.

Howard Johnson's is just across the street from Disneyland and only minutes from the Pacific Ocean beaches and other popular attractions.

Each guest room is unusually spacious and most have private balconies, extra-length beds, individually controlled air conditioning, and color TV. The rooms are designed to accommodate large families in comfort.

Howard Johnson's has won numerous architectural design awards. Created by world-famous architect William L. Pereira, it sets new standards in beauty, comfort and convenience.

The six-acre setting of Howard Johnson's is like an oasis where your guests can spend lazy hours at the swimming pool and wading pools or they can just relax among eucalyptus trees, olive trees and magnificent gardens. This is California living at its finest.

And of course, the service at Howard Johnson's is always friendly, personal and prompt. The entire staff aims to make vacation dreams come true.



An Executive Club Hotel Certificate enables you to offer your guests deluxe accommodations at Howard Johnson's. Please remember that you must affix your company validation label in the space provided on the certificate before your guests can redeem their Executive Club Hotel Certificate.

Vacation In Unique Treehouse Villas

Nestled among cypress, pine, oak and bay trees near the main stream of the Buena Vista waterway system, 60 Treehouse Villas offer a unique vacation retreat at the Walt Disney World Village.

Each octagonal-shaped Treehouse is constructed atop a single concrete "trunk" with wooden-beam "branches" supporting the main living area above. Rustic stairs lead up to a sundeck and bridge across the living areas.



Broad picture windows look out in eight directions through evergreen trees, across winding waterways and green rolling fairways. These pedestal-type accommodations have been used in a limited number of exclusive mountain and seashore resort areas to provide a total environmental experience.

Each Treehouse includes approximately 1,000 square feet of living space. The two-bedroom house has two bathrooms, a completely equipped kitchen with snack bar, and dining-living room.

Nearby is the Walt Disney World Village with many unique shops and several restaurants. Minutes away is the Lake Buena Vista Club overlooking an 18-hole golf course, as well as the Village Lounge which hosts some of the top names in jazz entertainment.

The Treehouses are among three types of Villas in the Walt Disney World Village including 133 Vacation Villas, 65 Fairway Villas and 136 Club Lake Villas in the golf-centered vacation community.

Connected by continuous shuttle bus service to the Walt Disney World Vacation Kingdom, these unusual holiday hideaways provide a unique choice of accommodations for your Executive Club guests visiting Central Florida.

Around the World in Epcot Center

Spotlight: Italy

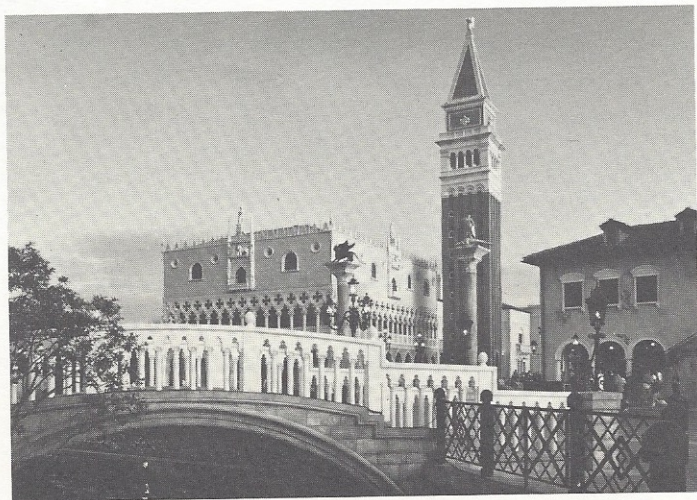
Italy, a warm and colorful country, fostered a revolution in art and science that affected most of the world for over three centuries. Disney designers faced a tremendous challenge when they began the planning and construction of Italy in Epcot Center World Showcase. How could they convey such a myriad of treasures in such limited space?

The planners tackled this problem by concentrating on structures that were easily recognizable and representative of Italy. They decided to make Venetian architecture the prominent style at the pavilion and the Doge's Palace replica is the major landmark. All of the architecture is schematically correct in its delicate ornamentation.

Numerous shops and the L'Originale Alfredo di Roma Ristorante lend to the authentic atmosphere. A treasure trove of Neapolitan handcrafts, such as terra-cotta pottery, leather goods and woven baskets, is offered in the Arcata d'Artigiani.

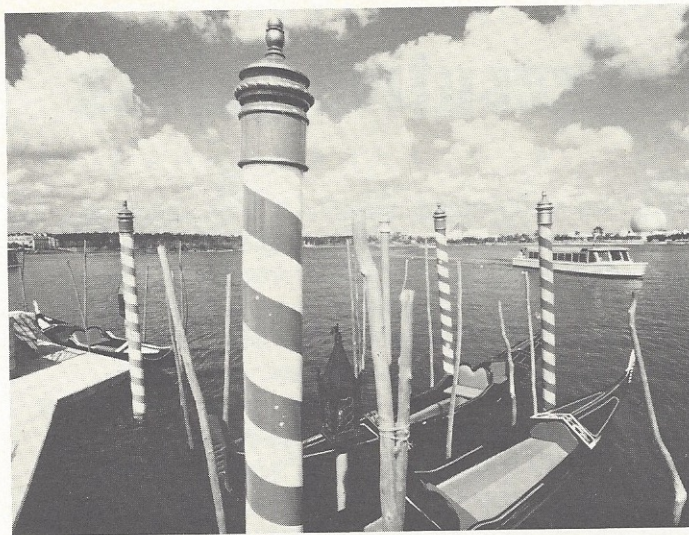
Inside the palace is Il Bel Cristallo, an elegant shop with inlaid-wood music boxes, alabaster figurines, Murano glass and Capadimonte florals. Another shop, La Gemma Elegante, features jewelry made from 14K gold, sterling silver and Venetian beads.

Guests dine as the Romans do at L'Originale Alfredo di Roma Ristorante. While being serenaded by strolling



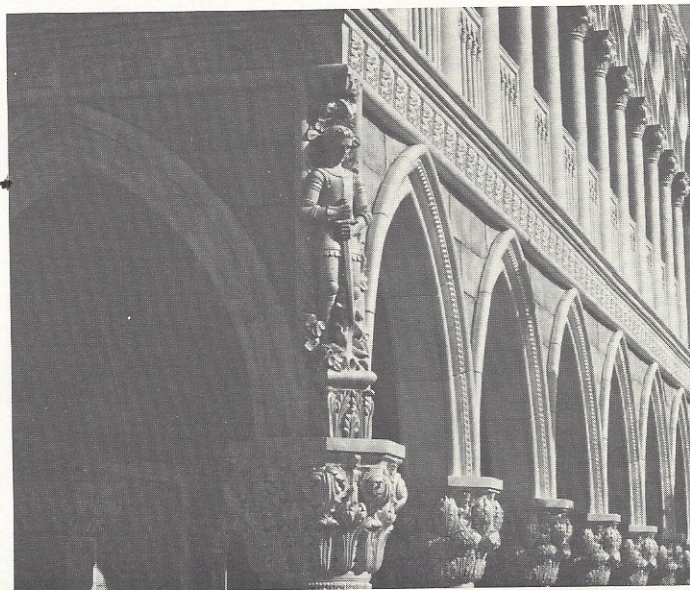
balladeers, they enjoy classic Fettuccine all' Alfredo or choose from an ample menu of veal and pasta entrees and scrumptious desserts.

The interior of Alfredo's is decorated with crystal chandeliers, white napery, paneled ceilings, patterned carpets and frescoes of the Italian countryside. Alfredo's is always alive with the bustle of singing waiters and talented musicians.



Entertainment is often colorful and spontaneous throughout Italy. Guests enjoy Italian folk singers and contemporary versions of Commedia del Art on the Piazza del Teatro.

Captured at World Showcase Italy are the basic yet beautiful attributes that make Italy one of the world's most beloved countries, rich in heritage and exquisite architectural wonders.



ITALY
World Showcase
EPCOT Center

Executive Extras

- Tokyo Disneyland attendance of 94,373, on August 13, broke all attendance records for a single day in the 28 year history of Disney theme parks. The previous record day was set at the Walt Disney World Magic Kingdom on December 31, 1980 when attendance hit a peak of 92,696.

More than 4.5 million people have visited Tokyo Disneyland since the theme park opened on April 15, 1983.

- Look for the Buena Vista color release of "Never Cry Wolf" this October. Charles Martin Smith ("American Graffiti") stars in this film about a Canadian biologist who lived for a winter and two summers in the Arctic to research his book. Carroll Ballard ("The Black Stallion") directed.

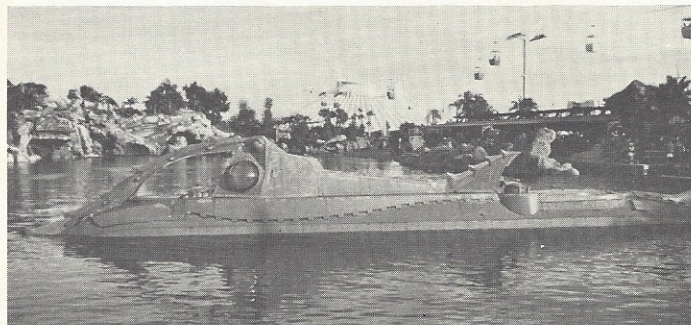
- "Mickey's Christmas Carol" marks the "big screen" return of Mickey Mouse, Donald Duck, Uncle Scrooge and many of the all-time Disney favorites. This all-new animated featurette is ready for a Christmas 1983 release.
- Executive Club guests are now welcome at the Granville's and Villa Verde restaurants in the new \$15 million Entertainment and Convention Center expansion at the Disneyland Hotel in California. Diverse dishes are offered in Granville's, which features American favorites, while the Villa Verde serves Italian specialties and homemade ice cream and sherbet.
- The Disney Channel, Walt Disney Productions pay-TV cable service, reached its two month projection of 100,000 subscribers in its first two weeks. The 100,000 figure represents the largest number of subscribers to a premium cable service, in the shortest period of time, in the history of pay television.

Fall Is A Great Time To Visit Disneyland Park Or Walt Disney World

Golden sunshine and near-perfect temperatures make autumn a splendid time to visit Disneyland Park in California or the Walt Disney World Vacation Kingdom in Florida.



Disneyland Park Fall operating hours are generally 10 a.m. to 6 p.m. during the week with longer hours on weekends and holidays. Disneyland will be closed on Mondays and Tuesdays (except for holiday periods) beginning October 24.



Both the Magic Kingdom and Epcot Center are open everyday of the year. Operating hours in the Magic Kingdom are 9 a.m. to 6 p.m. this Fall.



Epcot Center is open 9 a.m. to 8 p.m.

For further information and details, please write or call:

Executive Club Offices

Headquarters:

Walt Disney's Executive Club
P.O. Box 4262
Anaheim, California 92803
(714) 999-4808

Hours: 8:30-5:00 p.m.
Pacific Time, Monday through
Friday, except legal holidays

Eastern Regional Office:

Walt Disney's Executive Club
P.O. Box 40
Lake Buena Vista, Florida 32830
(305) 828-3267

Hours: 8:30-5:00 p.m.
Eastern Time, Monday through
Friday, except legal holidays